

CERTIFICATE OF LOCATION OF GOVERNMENT CORNER

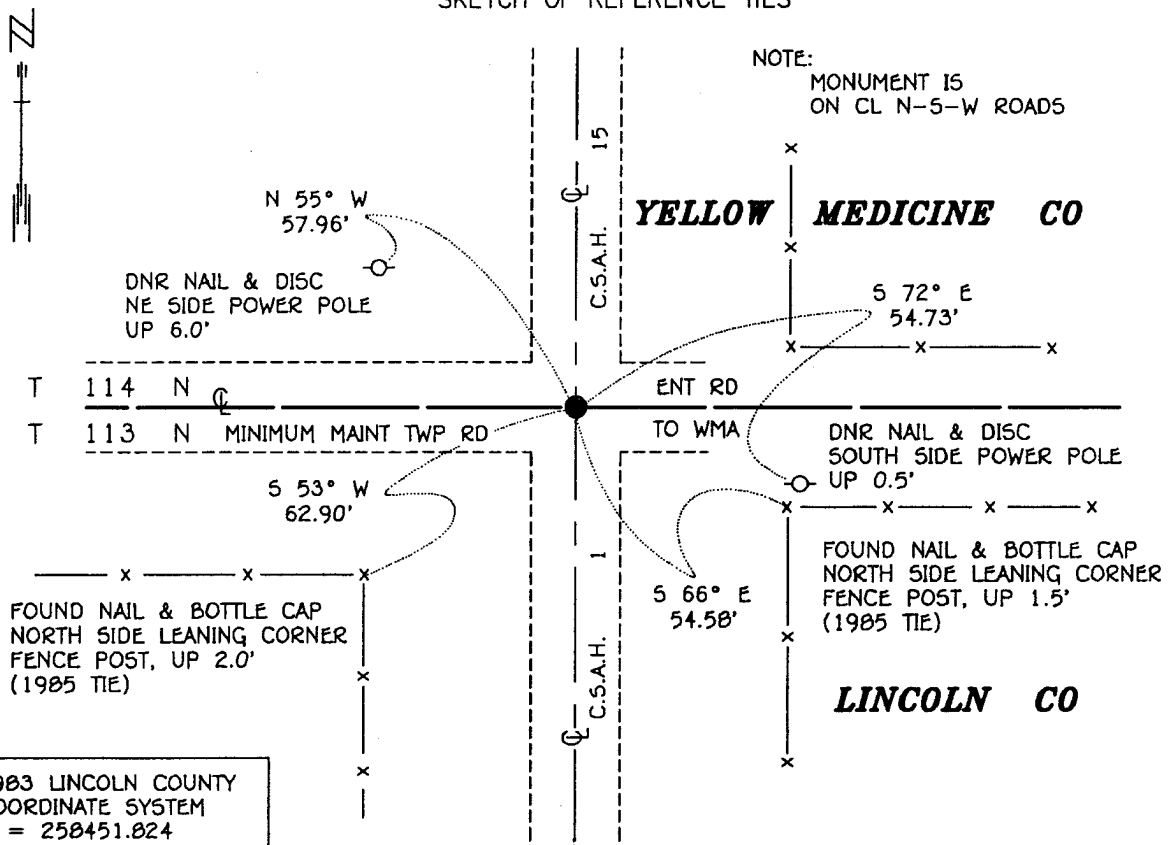
SOUTHEAST Corner of Section 32, Township 114 N, Range 46 W, 5th P.M.

STATE OF MINNESOTA, County of YELLOW MEDICINE

At the corner location shown on the sketch:

- On 5-22-96 found a 1/2" OUTSIDE DIAMETER x 18" PIPE, DOWN 0.8'
DATE
- left monument as found, lowered monument, removed monument (explain)
- On 5-22-96 Placed a 3/4" x 24" REBAR WITH ALUMINUM CAP STAMPED
DATE
"DNR SURVEY MARKER", DOWN 0.1'

SKETCH OF REFERENCE TIES



1983 LINCOLN COUNTY
COORDINATE SYSTEM
N = 258451.824
E = 460317.984

BEARINGS OBSERVED WITH COMPASS

Statement of evidence relative to this corner location is on back of page.

WM00190.00.00.01
J.B.M. AUG 1996

I hereby certify that this document and the data contained herein was prepared by me or under my direct supervision.

Bruce W. Sheppard 8-13-96
SIGNATURE DATE

License Number 17003

- Land Surveyor, Professional Engineer
- County Surveyor, County Engineer

OFFICE OF THE COUNTY RECORDER
County of Yellow Medicine

I hereby certify that this document was filed in the Co. recorders office at 10:10 A.M. on the 16 day of August A.D., 1996

County Recorder Janice A. Opdebe
By _____, Deputy
DOCUMENT NO. 212425

The DNR Bureau of Engineering contacted the following for survey information:

Minnesota Secretary of State's Office
Lincoln County Recorder's Office
Lincoln County Highway Engineer's Office
Yellow Medicine County Recorder's Office
Yellow Medicine County Highway Engineer's Office
Lyle Moseng Land Surveying of Marshall

- 1871 U.S. General Land Office notes obtained from the Secretary of State's Office show the corner marked with a wood post in a raised mound as per instructions.
- 1910 May, Surveyor's Record Book, page 214, obtained from the Yellow Medicine County Recorder's Office, contains a survey by John Norgaard, County Surveyor. Survey shows corner but a description of what was found or set is not given. The corner is shown:
2619 feet from the east quarter corner of Section 32
2672 feet from the north quarter corner of Section 5
1336. feet from the north sixteenth corner of the northeast quarter of Section 5
- 1913 A page in a Surveyor's Record Book, obtained from the Yellow Medicine County Recorder's Office, contains a survey by John Norgaard, County Surveyor. Survey states that a jasper stone monument was found even with the ground at corner. The corner is shown:
2619 feet from the east quarter corner of Section 32
2608 feet from the north quarter corner of Section 4
- No Section Corner Tie Book, obtained from the Yellow Medicine County Highway Engineer's Office,
Date does not indicate what was found or set but the following ties are shown to it:
fence post, west-northwest, 85.7 feet
corner fence post, southwest, 61.4 feet
corner fence post, southeast, 53.8 feet

telephone pole, southwest, 42.5 feet
fence post, northeast, 43.9 feet
- 1957 October, DNR Bureau of Engineering obtained the following ties for corner from the County:
fence post, west-northwest, 85.7 feet
corner fence post, southwest, 61.4 feet
corner fence post, southeast, 53.8 feet
A railroad spike was set for corner and was found to be:
2617.1 feet from the north quarter corner of Section 4
- 1959 Section Corner Tie Book, obtained from the Yellow Medicine County Highway Engineer's Office, shows that a spike was found down 7 inches at corner. The following ties are shown to corner:
second fence post, west-northwest, 85.8 feet
corner fence post, southwest, 61.6 feet
corner fence post, southeast, 54.1 feet