

CERTIFICATE OF LOCATION OF GOVERNMENT CORNER

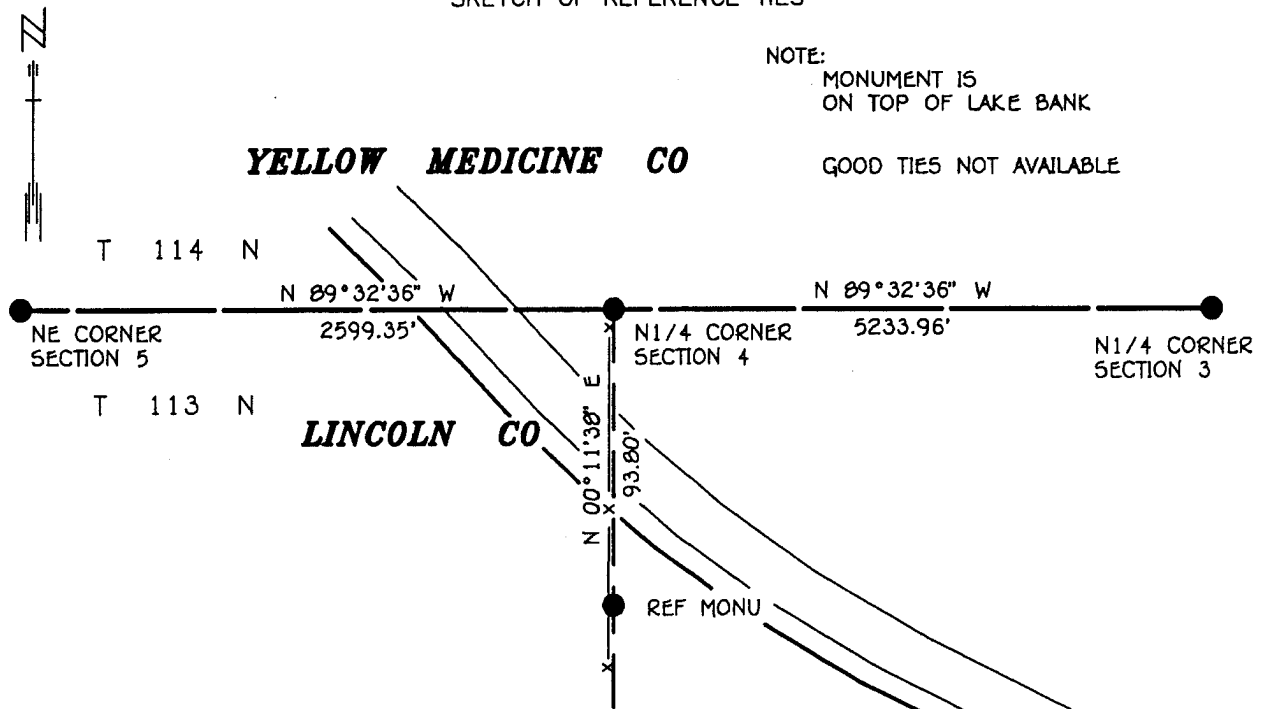
SOUTH QUARTER Corner of Section 33, Township 114 N, Range 46 W, 5th P.M.

STATE OF MINNESOTA, County of YELLOW MEDICINE

At the corner location shown on the sketch:

- On _____ found a _____
DATE
- left monument as found, lowered monument, removed monument (explain)
- On 6-17-96 Placed a 3/4" x 24" REBAR WITH PLASTIC CAP STAMPED
DATE "MN DNR PROPERTY MONUMENT", UP 0.2'

SKETCH OF REFERENCE TIES



NOTE:
MONUMENT IS
ON TOP OF LAKE BANK

GOOD TIES NOT AVAILABLE

1983 LINCOLN COUNTY COORDINATE SYSTEM	1983 LINCOLN COUNTY COORDINATE SYSTEM
N1/4 CORNER N = 258431.102 E = 462917.252	REF MONUMENT N = 258337.302 E = 462916.931

BEARINGS ARE IN COUNTY ORIENTATION

Statement of evidence relative to this corner location is on back of page.

WMA00190.00.00.01
J.B.M. AUG 1996

I hereby certify that this document and the data contained herein was prepared by me or under my direct supervision.

Bruce W. Shippel 8-13-96
SIGNATURE DATE

License Number 17003

- Land Surveyor, Professional Engineer
 County Surveyor, County Engineer

OFFICE OF THE COUNTY RECORDER
County of Yellow Medicine

I hereby certify that this document was filed in the Co. recorders office at 10:15 A.M. on the 16 day of August A.D., 1996

County Recorder Norman J. Orndorff
By _____, Deputy
DOCUMENT NO. 212426

South Quarter Corner of Section 33, Township 114 North, Range 46 West

The DNR Bureau of Engineering contacted the following for survey information:

Minnesota Secretary of State's Office
Lincoln County Recorder's Office
Lincoln County Highway Engineer's Office
Yellow Medicine County Recorder's Office
Yellow Medicine County Highway Engineer's Office
Lyle Moseng Land Surveying of Marshall

1871 U.S. General Land Office notes obtained from the Secretary of State's Office show the corner in a grassy lake so witness corner was set 50 links (33.00 feet) West and marked with a wood post in a raised mound as per instructions.

1898 Hansonville Township Ownership Plat obtained from the Lincoln County Recorder's Office shows property divisions along the entire north-south quarter line of Section 4.

1913 A page in a Surveyor's Record Book, obtained from the Yellow Medicine County Recorder's Office, contains a survey by John Norgaard, County Surveyor. Survey states:

"In the government notes the W.C. 33 feet west and the resurvey 13 years ago I found the same. So I used the same distances now as I found it to be then. The corner are at equal distance and on line between section corners."

A description of what was found or set at the witness corner or quarter corner is not given. The quarter corner is shown:

2608 feet from adjoining section corners

1957 October, DNR Bureau of Engineering established corner as follows:

- A) on the southerly projection of a north-south fence along the east line of the northwest quarter of Section 33
- B) 2640 feet from a corner fence post with fences north, south, east and west found at the center of Section 33

An iron pin was set to mark corner and was found to be:

2617.1 feet from the northeast corner of Section 5
5280 feet from the north quarter corner of Section 33

1960 April, DNR Bureau of Engineering found the iron set for corner in 1957.

1996 June 17, DNR Bureau of Engineering found the area of the corner and witness corner to be under water. Located a north-south fence southerly of the area of corner and computed a position for corner as follows:
on the northerly extension of the north-south fence
on line between the northeast corner of Section 5 and the north quarter corner of Section 3

The computed position was found to be:

2599.35 feet from the northeast corner of Section 5
5233.96 feet from the north quarter corner of Section 3

Analysis of the above information led the DNR Bureau of Engineering to conclude that the computed position on the northerly extension of a north-south fence and on line between the northeast corner of Section 5 and the north quarter corner of Section 3 marks the obliterated location of the corner. Was unable to set a monument at the computed position for corner so a reference monument was set on the north-south quarter line of Section 4 as shown on the sketch of reference ties.

- 1960 April, DNR Bureau of Engineering found the railroad spike set for corner in 1957
- 1973 June, Corner Tie Book, obtained from the Lincoln County Highway Engineer's Office, shows a monument at corner but a detailed description of it is not given. The following ties are shown to corner:
second fence post, west-northwest, 85.8 feet
corner fence post, southwest, 61.6 feet
corner fence post, southeast, 54.1 feet
- 1985 Corner Tie Book, obtained from the Lincoln County Highway Engineer's Office, shows a 1 1/2" masonry nail at corner but does not indicate if it was found or set. The following ties are shown to corner:
nail and bottle cap in top of corner fence post, northeast, 55.2 feet
nail and bottle cap in corner fence post, southeast, 54.5 feet
nail and bottle cap in power pole, southwest, 62.55 feet
nail and bottle cap in power pole, northwest, 44.2 feet
- 1996 May 22, DNR Bureau of Engineering found a 1/2" inside diameter by 18" long iron pipe down 0.8 of a foot at corner. Searched for and found record ties as shown on sketch of reference ties. Removed the iron pipe and dug a 3 foot north-south by 2.5 foot east-west by 3 foot deep hole the center being the iron pipe. Also, probed 3.5 feet below the bottom of the hole and 2 feet west of the westerly side of the hole in search of a jasper stone but found nothing.
- Replaced the iron pipe with a DNR Survey Marker and found it to be:
on the center line of a north-south road
in line with the center line of a road west
2599.35 feet from the north quarter corner of Section 4

Analysis of the above information led the DNR Bureau of Engineering to conclude that the found iron pipe marks the obliterated location of the corner.