

# CERTIFICATE OF LOCATION OF GOVERNMENT CORNER

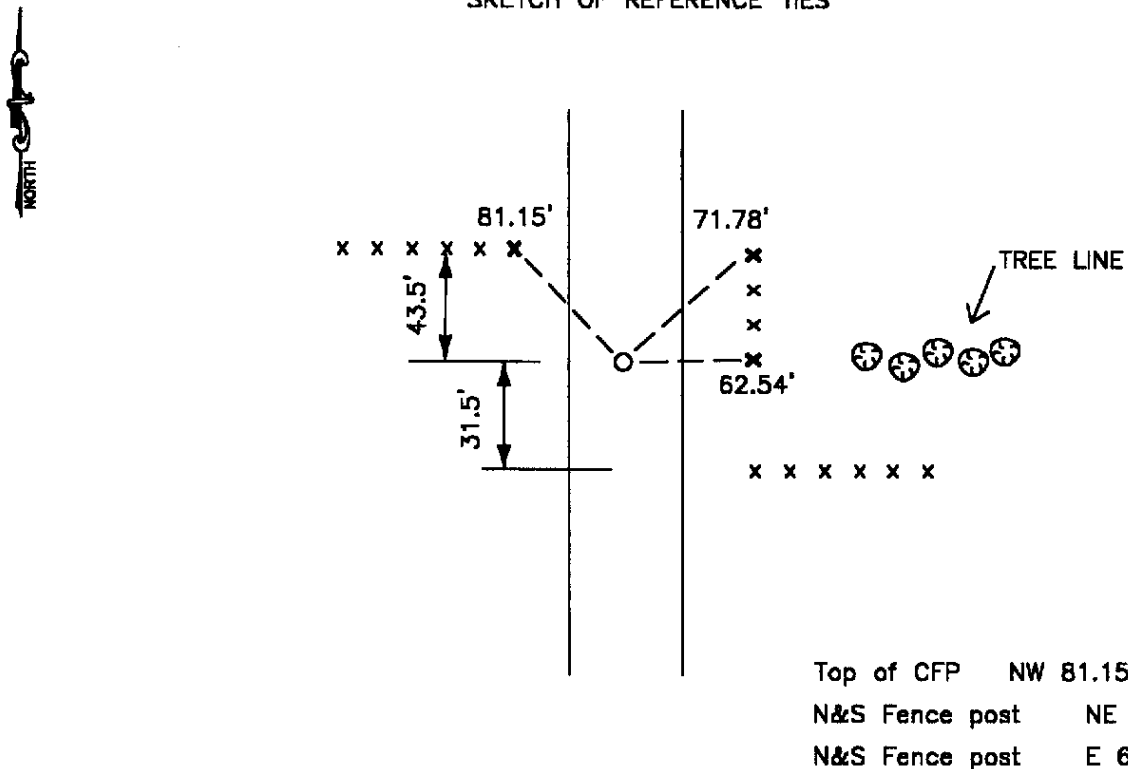
Northeast Corner of Section 22, Township 114, Range 46, 5th P.M.

STATE OF MINNESOTA, County of Yellow Medicine

At the corner location shown on the sketch:

- On \_\_\_\_\_ found a \_\_\_\_\_  
DATE
- left monument as found,  lowered monument,  removed monument (explain)
- On Nov. 14, 1996 placed a 5/8" iron w/seal #11943  
DATE \*\* SEE BACK \*\*

### SKETCH OF REFERENCE TIES



Top of CFP NW 81.15'  
 N&S Fence post NE 71.78'  
 N&S Fence post E 62.54'

RECORDED	✓
GRANTOR	✓
GRANTEE	✓
INDEXED	✓

Statement of evidence relative to this corner location is on back of page.

I hereby certify that this document and the data contained herein was prepared by me or under my direct supervision.

Lyle C. Mooney 11/18/96  
SIGNATURE DATE

Registration No. 11943

Land Surveyor,  Professional Engineer  
 County Surveyor,  County Engineer

OFFICE OF THE COUNTY RECORDER  
 County of Yellow Medicine

I hereby certify that this document was filed in the Co. Recorders office at 2:00 P.M on the 20th day of November A.D. 1996

County Recorder Normand Oedeker  
 By \_\_\_\_\_, Deputy

DOCUMENT NO. **213051**

STATEMENT OF EVIDENCE:

History

John Norguard set a square cut stone for the corner —around 1900.

1951— Yellow Medicine County Highway Department found the corner stone 2 1/2 feet below the road surface

1956— Corner was destroyed during construction

1960— corner was assumed

On November 14, 1996 I set a 5/8" iron w/seal #11943 for the Northeast corner of Section 22. In re-establishing this corner, I ran a line from the west, along the north line of Section 22, by projecting the center line of the existing township road and set a point on the center line of the existing road for a temporary point for the Northeast corner of Section 22. We then chained from the Southeast corner of Section 22—114—46 to the Northeast corner of Section 15—114—46. The distance from the Southeast corner of Section 22 to the existing quarter line fence to the west for said Section 22 is 2648 feet, by doubling this distance I fell 4 feet south of the temporary point I set by extending the center line of township road from the west. I set the iron 5296 feet north of the Southeast corner of Section 22, this distance is a chained distance. The iron does line up with an irregular tree line to the east that appears to have grown in a former fence line.