

# CERTIFICATE OF LOCATION OF GOVERNMENT CORNER

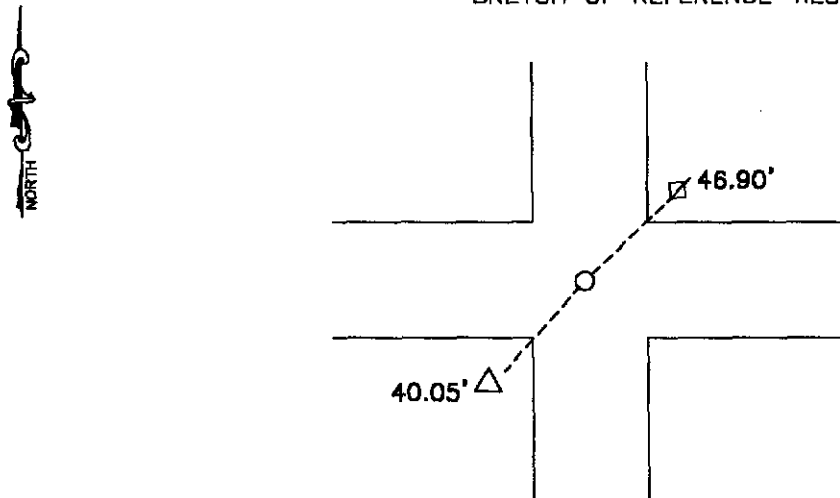
NORTHEAST Corner of Section 20, Township 114, Range 44, 5th P.M.

STATE OF MINNESOTA, County of YELLOW MEDICINE

At the corner location shown on the sketch:

- On April 16, 1993 found a \*\* SEE BACK \*\*  
DATE
- left monument as found,  lowered monument,  removed monument (explain)
- On April 16, 1993 placed a 1 1/4" iron pipe w/seal #11943 at road surface above  
DATE granite stone

### SKETCH OF REFERENCE TIES



Nail & seal in power pole NE 46.90'  
Nail & seal in telephone post SW 40.05'

RECORDED
GRANTOR
GRANTEE
INDEXED

Statement of evidence relative to this corner location is on back of page.

I hereby certify that this document and the data contained herein was prepared by me or under my direct supervision.

Ayle C Mooring 2-5-96  
SIGNATURE DATE

Registration No. 11943

- Land Surveyor,  Professional Engineer
- County Surveyor,  County Engineer

OFFICE OF THE COUNTY RECORDER  
County of Yellow Medicine

I hereby certify that this document was filed in the Co. Recorders office at 2:05 P.M. on the 20th day of November A.D. 1996

County Recorder Normand Osbeck  
By \_\_\_\_\_, Deputy

DOCUMENT NO. 213052

**STATEMENT OF EVIDENCE:**

April 16, 1993, Moseng Land Surveying dug with a back hoe and found a square cut granite stone 2 1/2' down. Placed an iron on top of the stone and a 1 1/4" iron pipe w/seal #11943 at the road surface.