

CERTIFICATE OF LOCATION OF GOVERNMENT CORNER

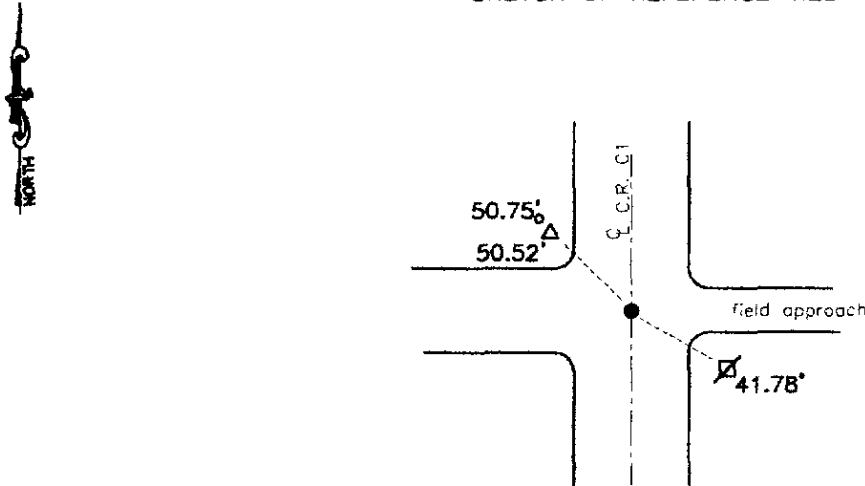
Southeast Corner of Section 35, Township 114, Range 40, 5th P.M.

STATE OF MINNESOTA, County of Yellow Medicine

At the corner location shown on the sketch:

- On Aug. 18, 1997 found a 6"x6" granite stone with a field stone on top it.
DATE
- left monument as found, lowered monument, removed monument (explain)
- On Aug. 18, 1997 placed a cast iron monument at the road surface and 2 iron stakes
DATE along side of stones.

SKETCH OF REFERENCE TIES



Top of telephone pedestal past NW 50.52'
 Top of telephone pedestal NW 50.52'
 Nail & seal in power pole SE 41.78'

RECORDED
 GRANTOR ✓
 GRANTEE ✓
 INDEXED

Statement of evidence relative to this corner location is on back of page.

I hereby certify that this document and the data contained herein was prepared by me or under my direct supervision.

Lyle C. Moring 1-9-98
 SIGNATURE DATE

Registration No. 11943

- Land Surveyor, Professional Engineer
- County Surveyor, County Engineer

OFFICE OF THE COUNTY RECORDER
County of

I hereby certify that this document was filed in the Co. Recorders office at 8:00 A.M on the 19 day of August A.D. 19 98

County Recorder Norman J. Osdall
By _____, Deputy

DOCUMENT NO. 217850

Statement of Evidence