

CERTIFICATE OF LOCATION OF GOVERNMENT CORNER

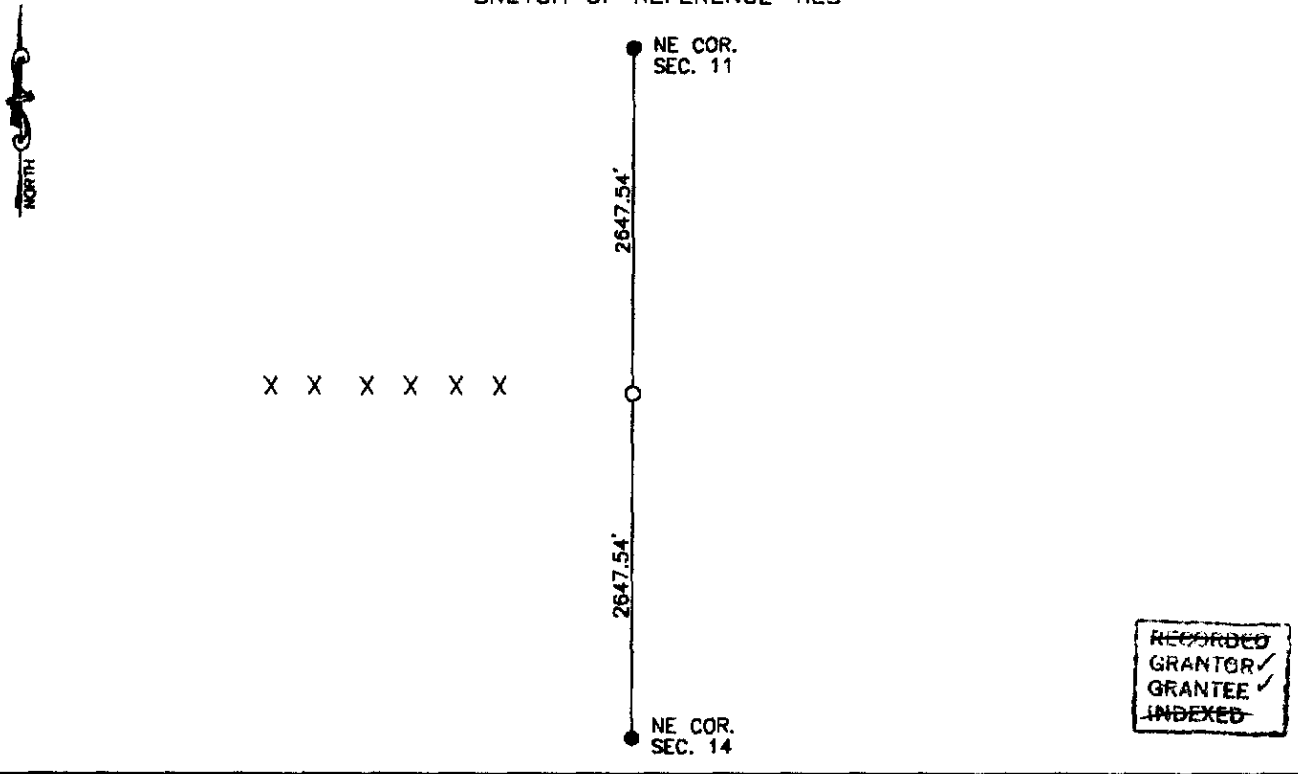
EAST QUARTER Corner of Section 11, Township 115, Range 46, 5th P.M.

STATE OF MINNESOTA, County of YELLOW MEDICINE

At the corner location shown on the sketch:

- On _____ found a _____
- left monument as found, lowered monument, removed monument (explain)
- On Feb. 23, 1998 placed a 5/8" iron with seal #11943 midway and on line between section corners

SKETCH OF REFERENCE TIES



Statement of evidence relative to this corner location is on back of page.

I hereby certify that this document and the data contained herein was prepared by me or under my direct supervision.

Lyle C Moseng 3-10-98
SIGNATURE DATE

Registration No. 11943

- Land Surveyor, Professional Engineer
- County Surveyor, County Engineer

OFFICE OF THE COUNTY RECORDER
County of _____

I hereby certify that this document was filed in the Co. Recorders office at 8:10 A.M on the 19 day of August A.D. 1998

County Recorder Norman Gosnell
By _____, Deputy

DOCUMENT NO. 217852

Statement of evidence

THE ORIGINAL CORNER WAS SET MIDWAY AND ON LINE.

WE FOUND NO RECORD OF THE CORNER AT THE YELLOW MEDICINE COUNTY RECORDER'S OFFICE OR THE COUNTY HIGHWAY DEPARTMENT.

WE SET THE CORNER MIDWAY AN ON LINE. IT IS IN THE CENTER LINE OF THE ROAD AND IN LINE WITH THE FENCE TO THE WEST.