

CERTIFICATE OF LOCATION OF GOVERNMENT CORNER

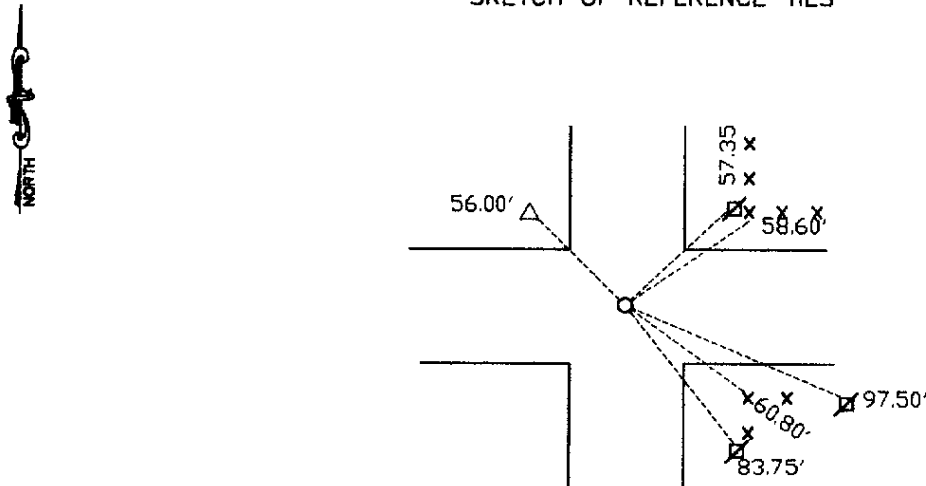
NORTHEAST Corner of Section 14, Township 115, Range 46, 5th P.M.

STATE OF MINNESOTA, County of YELLOW MEDICINE

At the corner location shown on the sketch:

- On Feb. 23, 1998 found a iron by using ties to a grantie monument that the County Highway Dept. provided. - the ties to the granite mon. fit the found iron.
DATE
- left monument as found, lowered monument, removed monument (explain)
- On Feb. 23, 1998 placed a 5/8" iron with seal No. 11943 over found iron.
DATE

SKETCH OF REFERENCE TIES



- Nail & bottle cap in power pole - NE 57.35'
- Nail & bottle cap in power pole - ESE 97.50'
- Nail & seal in corner fence post - NE 58.60'
- Nail & seal in corner fence post - SE 60.80'
- Nail & seal in power pole - SE 83.75'
- Nail & seal in telephone pedestal post - NW 56.00'

RECORDED
 GRANTOR ✓
 GRANTEE ✓
 INDEXED

Statement of evidence relative to this corner location is on back of page.

I hereby certify that this document and the data contained herein was prepared by me or under my direct supervision.

Lyle E. Moring 3-10-98
SIGNATURE DATE

Registration No. 11943

- Land Surveyor, Professional Engineer
- County Surveyor, County Engineer

OFFICE OF THE COUNTY RECORDER
 County of _____

I hereby certify that this document was filed in the Co. Recorders office at 8:15 A.M on the 19 day of August A.D. 1998

County Recorder Norman J. Coakley
 By _____, Deputy

DOCUMENT NO. **217853**

Statement of evidence

WITNESSES