

# CERTIFICATE OF LOCATION OF GOVERNMENT CORNER

East Quarter \_\_\_\_\_ Corner of Section 28, Township 114, Range 39, 5th P.M.

STATE OF MINNESOTA, County of Yellow Medicine

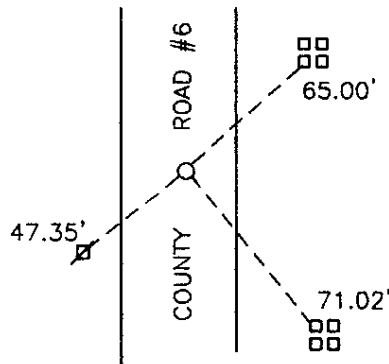
At the corner location shown on the sketch:

On Aug 19, 1998 found a 1" iron pipe with 8" X 1/2" iron hook in pipe  
DATE

left monument as found,  lowered monument,  removed monument (explain)

On Aug 19, 1998 placed a 1" iron pipe w/seal at road surface  
DATE

### SKETCH OF REFERENCE TIES



Nail and seal in power pole 47.35' SW  
 SW leg of light pole 65.00' NE  
 NW leg of light pole 71.02' SE

Statement of evidence relative to this corner location is on back of page.

I hereby certify that this document and the data contained herein was prepared by me or under my direct supervision.

Lyle E. Moring  
SIGNATURE

01/07/1999  
DATE

Registration No. 11943

- Land Surveyor,  Professional Engineer  
 County Surveyor,  County Engineer

OFFICE OF THE COUNTY RECORDER  
 County of \_\_\_\_\_

I hereby certify that this document was filed in the Co. Recorders office at 10:10 A.M. on the 11 day of Feb. A.D. 1999

County Recorder Kay Nerdahl

By Lyle E. Moring, Deputy

DOCUMENT NO. 219293

Statement of Evidence

On August 19, 1998 Moseng Land Surveying dug by hand and found a 1" iron pipe with a 8" X 1/2" iron hook in pipe, 30" below surface. We placed a 1" iron pipe with seal number 11943 above monument at road surface.