

CERTIFICATE OF LOCATION OF GOVERNMENT CORNER

North Quarter _____ Corner of Section 19 , Township 113 , Range 39 , 5th P.M.

STATE OF MINNESOTA, County of Yellow Medicine

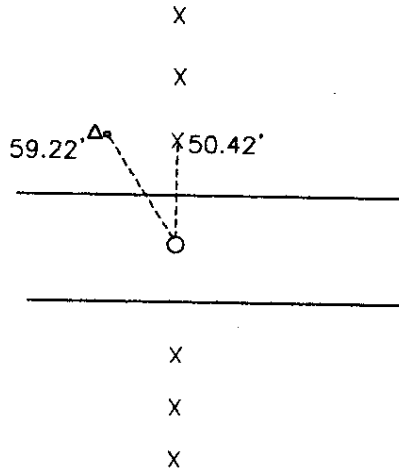
At the corner location shown on the sketch:

On _____ found a _____

left monument as found, lowered monument, removed monument (explain)

On June 3, 1998 placed a 1" iron pipe with seal #11943

SKETCH OF REFERENCE TIES



Nail and seal in gourd post next to pedestal 59.22' NW
Nail and seal in end fence post 50.42' N

Statement of evidence relative to this corner location is on back of page.

I hereby certify that this document and the data contained herein was prepared by me or under my direct supervision.

Lyle C. Moring 1-11-99
SIGNATURE DATE

Registration No. 11943

- Land Surveyor, Professional Engineer
- County Surveyor, County Engineer

OFFICE OF THE COUNTY RECORDER

County of _____

I hereby certify that this document was filed in the Co. Recorders office at 10:15 A .M on the 11 day of Feb. A.D. 1999

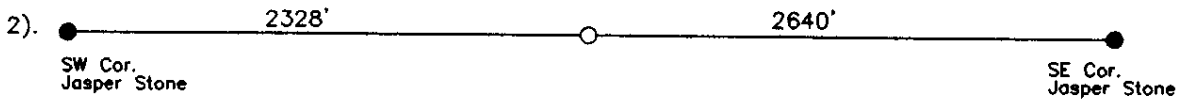
County Recorder Kay Nerdahl

By *Staci R. K.* Deputy

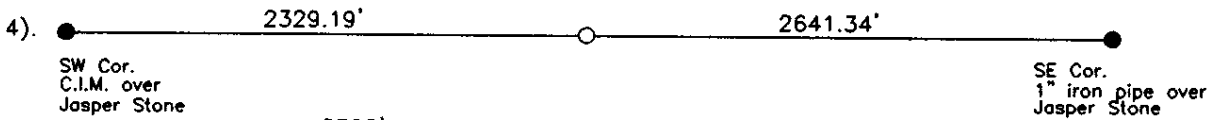
DOCUMENT NO. 219294

Statement of Evidence

- 1). In March of 1912, John Norgaard set the corner according to testimony of Bahn Brothers, he recorded the following.



- 3). On June 3, 1998 Moseng land surveying dug with backhoe from Jeseritz Construction, we found nothing. We placed a 1" iron pipe with seal number 11943, proportionately between section corners.



$$\frac{2328'}{4968'} = \frac{X}{4970.53'} = X = 2329.19'$$