

# CERTIFICATE OF LOCATION OF GOVERNMENT CORNER

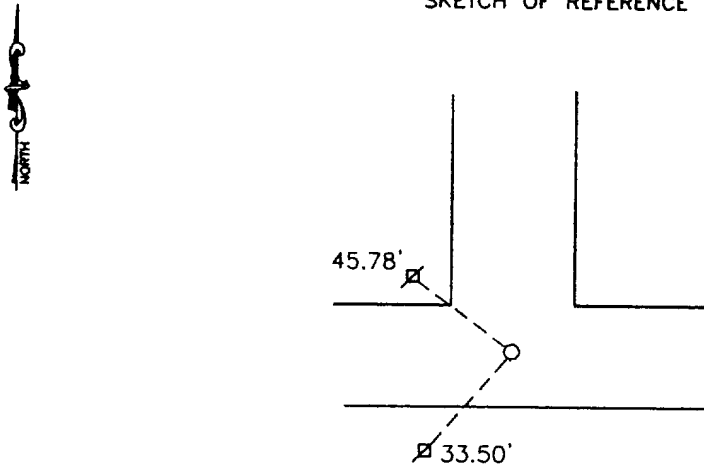
North Quarter \_\_\_\_\_ Corner of Section 35 Township 114 Range 39 5th P.M.

STATE OF MINNESOTA, County of Yellow Medicine

At the corner location shown on the sketch:

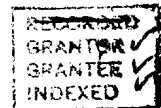
- On \_\_\_\_\_ found a \_\_\_\_\_  
 left monument as found.  lowered monument.  removed monument (explain)
- On May 17, 1999 placed a 1" iron pipe w/seal #11943

### SKETCH OF REFERENCE TIES



Nail and seal in power pole 45.78' NW  
 Nail and seal in power pole 33.50' SW

*Orig. on file ✓  
 1 copy in RedBook ✓  
 1 copy Ref to Kyle ✓*



Statement of evidence relative to this corner location is on back of page.

I hereby certify that this document and the data contained herein was prepared by me or under my direct supervision.

*Ayle C. Moring* 6-1-99  
SIGNATURE DATE

Registration No. 11943

- Land Surveyor,  Professional Engineer  
 County Surveyor,  County Engineer

### OFFICE OF THE COUNTY RECORDER

County of \_\_\_\_\_

I hereby certify that this document was filed in the Co. Recorders office at 9:25 A. M on the 19 day of July A.D. 1999

County Recorder Kay Nerdahl

By *Laila ROHLK* Deputy

DOCUMENT NO. 220605

*N/c*

Statement of Evidence

June 5, 1891 Jonah Peterson, the County Surveyor, set a stone.

May, 1926 John Norguard recorded the distance from the southeast corner of section to the south quarter of section as 2600'.

On May 17, 1999 Moseng Land Surveying dug, with backhoe from Jesseritz Construction, on line between section corners and 2600 feet West from northeast corner sec. 35-114-39, and found nothing. We placed a 1" iron pipe with seal number 11943, on line between section corners and 2600' feet west of northeast corner.