

# CERTIFICATE OF LOCATION OF GOVERNMENT CORNER

Southeast Corner of Section 34, Township 114, Range 38, 5th P.M.

STATE OF MINNESOTA, County of Yellow Medicine

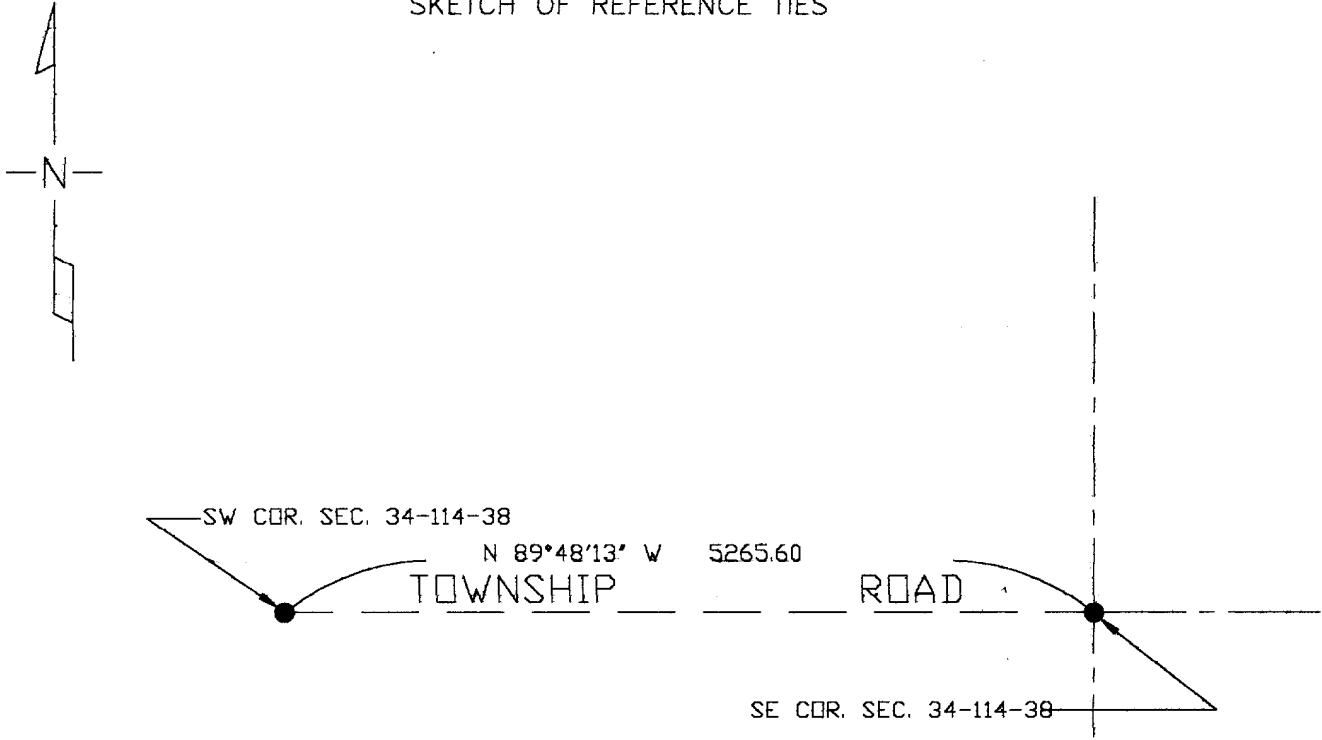
At the corner location shown on the sketch

On 9-24-99 found a 4" x 6" flat stone 1.8' deep with wood nub on north side  
 @ centerline of Township Road North, South & East.

left monument as found       lowered monument,       removed monument (explain)

On 9-24-99 placed a 1" iron pipe with survey cap 23008 over the  
top center of stone.

## SKETCH OF REFERENCE TIES



TIES:  
 NAIL IN POWERPOLE-67.10' NW  
 NAIL IN POWERPOLE-89.50' NE

Statement of evidence relative to this corner location is on back of page.

I hereby certify that this document and the data contained herein was prepared by me or under my direct supervision.

Perry L. Zieske      10-5-99  
 SIGNATURE      DATE

MN. REGISTRATION NO. 23008

- Land Surveyor,       Professional Engineer  
 County Surveyor,       County Engineer

OFFICE OF THE COUNTY RECORDER

I hereby certify that this document was filed in the Co. Recorder's Office at 3:10 P.M. on the

12 day of October, 1999

County Recorder Kay Nerdahl

By Mais Rohlik, Deputy

DOCUMENT NO. 221235