

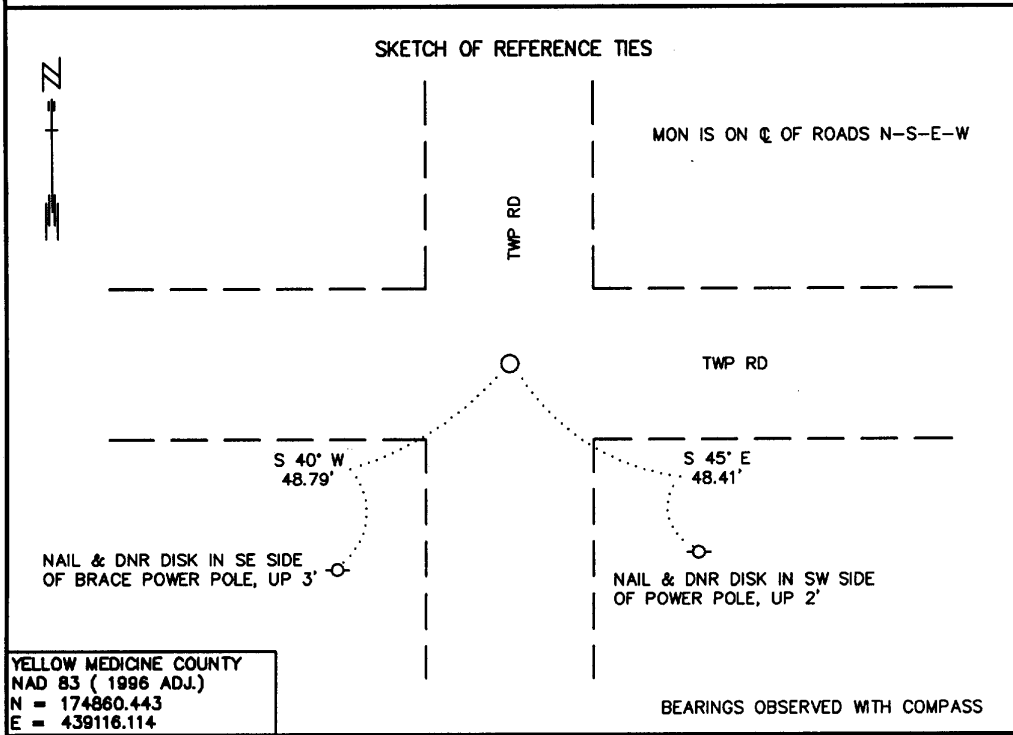
CERTIFICATE OF LOCATION OF GOVERNMENT CORNER

NORTHEAST Corner of Section 27, Township 115 N., Range 44 W., 5th P.M.

STATE OF MINNESOTA, County of YELLOW MEDICINE

At the corner location shown on the sketch:

- On 5/1/2000 found a 6" X 6" CUT GRANITE STONE, DOWN 2.0' UNDER A ROTTED WOOD POST
DATE
- left monument as found, lowered monument, removed monument (explain)
- On 5/1/2000 Placed a 3/4" X 12" REBAR WITH A PLASTIC CAP STAMPED "MN DNR LS 17003"
DATE
DOWN 0.5' OVER STONE



YELLOW MEDICINE COUNTY
NAD 83 (1996 ADJ.)
N = 174860.443
E = 439116.114

Statement of evidence relative to this corner location is on back of page.

6/13/2000
WMA00267

I hereby certify that this document and the data contained herein was prepared by me or under my direct supervision.

Bruce W. Sheppard 6/26/00
SIGNATURE DATE

License Number 17003

Land Surveyor, Professional Engineer
 County Surveyor, County Engineer

OFFICE OF THE COUNTY RECORDER
County of Yellow Medicine

I hereby certify that this document was filed in the Co. Recorder's Office at 10:20 A.M. on the 5 day of July A.D., 2000

County Recorder Kay Nerdahl
By Luis Rohit, Deputy
DOCUMENT NO. 223190

Northeast Corner of Section 27, Township 115 North, Range 44 West

The DNR Bureau of Engineering contacted the following for survey information:

Minnesota Secretary of State's Office
Yellow Medicine County Recorder's Office
Yellow Medicine County Highway Engineer's Office
Montevideo City Engineer's Office

- 1871 U. S. General Land Office notes obtained from the Secretary of State's Office show the corner marked with a wood post in a raised mound as per instructions.
- 1901 Surveyor's Record Book B contains John Norgaard's, County Surveyor, remonumentation notes for section corners in Yellow Medicine County. The following information is stated about corner on page 117:
located at the intersection of roads running north, south, east and west
set a 6 inch by 6 inch by 24 inch long jasper granite level with the ground to mark corner
- 1911 October, page 251 of a Surveyor's Record Book, obtained from the County Recorder's Office, contains a survey by John Norgaard, County Surveyor. Survey shows corner but does not indicate what kind of monument was found or set. The corner is shown:
2640 feet from the north quarter corner of Section 26
5280 feet from the northeast corner of Section 26
5292 feet from the northeast corner of Section 22
- 1940 Section Corner Tie Book, obtained from the County Highway Engineer's Office, shows that a regular monument was found at corner. The following ties are shown to corner:
telephone pole, northwest, 40.8 feet
fence post, east-southeast, 93.4 feet
brace pole, southwest, 48.9 feet
10" Ash, north-northeast, 53.8 feet
third fence post, north-northwest, 64.8 feet
telephone pole, north-northeast, 104.1 feet
third fence post, south-southwest, 69.5 feet
- 2000 May 1, DNR Bureau of Engineering hired a backhoe to dig for evidence of the corner. A 6" by 6" cut granite stone was found down 2.0 feet with a 6" section of rotted wood post on top of it. Searched for but found no evidence of the record ties. Set a 3/4" by 12" rebar with plastic cap stamped "MN DNR LS 17003" over the cut granite stone and found it to be:
at the intersection of the centerline of roads north, south, east, and west
5286.32 feet from the northeast corner of Section 26
5292.71 feet from the northeast corner of Section 22

Analysis of the above information led the DNR Bureau of Engineering to conclude that the 6" by 6" cut granite stone marks the location of the corner.