

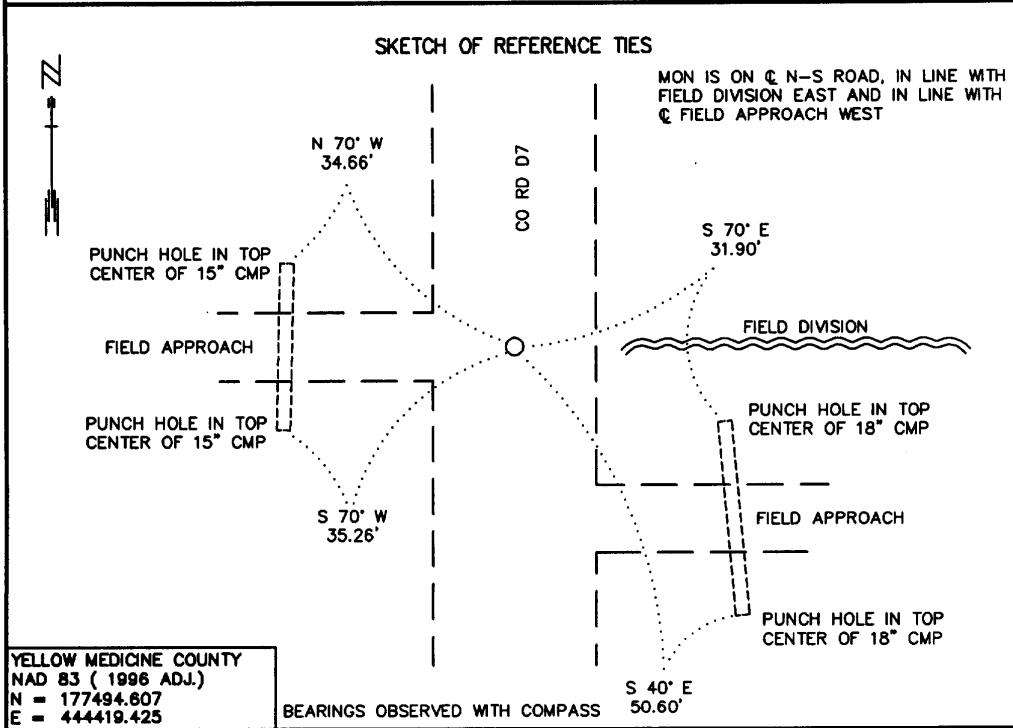
CERTIFICATE OF LOCATION OF GOVERNMENT CORNER

EAST QUARTER Corner of Section 23, Township 115 N., Range 44 W., 5th P.M.

STATE OF MINNESOTA, County of YELLOW MEDICINE

At the corner location shown on the sketch:

- On _____ found a _____
DATE
- left monument as found, lowered monument, removed monument (explain)
- On 5/2/2000 Placed a 3/4" X 24" REBAR WITH A PLASTIC CAP STAMPED "MN DNR LS 17003"
DATE



Statement of evidence relative to this corner location is on back of page.

8/13/2000
WMA00267

I hereby certify that this document and the data contained herein was prepared by me or under my direct supervision.

Russ W. Hagedorn 6/26/00
SIGNATURE DATE

License Number 17003
 Land Surveyor, Professional Engineer
 County Surveyor, County Engineer

OFFICE OF THE COUNTY RECORDER
County of Yellow Medicine

I hereby certify that this document was filed in the Co. Recorder's Office at 10:25 A.M. on the 5 day of July A.D., 2000

County Recorder Kay Nerdahl
By Neil Rohlik, Deputy
DOCUMENT NO. 223191

East Quarter Corner of Section 23, Township 115 North, Range 44 West

The DNR Bureau of Engineering contacted the following for survey information:

Minnesota Secretary of State's Office
Yellow Medicine County Recorder's Office
Yellow Medicine County Highway Engineer's Office
Montevideo City Engineer's Office

- 1871 U. S. General Land Office notes obtained from the Secretary of State's Office show the corner marked with a wood post in a raised mound as per instructions.
- 1911 October, page 251 of a Surveyor's Record Book, obtained from the County Recorder's Office, contains a survey by John Norgaard, County Surveyor. Survey states that corner was established on line and equal distance between section corners. A small stone was set to mark corner and is shown:
2649 feet from adjoining section corners
1324.5 feet from a stone set for the E 1/16 of the SE 1/4 of Section 23
8 feet north of a fence east that was set last year
- 1915 September, page 346 of a Surveyor's Record Book, obtained from the County Recorder's Office, contains a survey by L.S. Hoffman, Deputy County Surveyor. Survey shows corner but a description of what kind of monument was found or set is not given. The corner is shown:
2650 feet from adjoining section corners
- 2000 May 2, DNR Bureau of Engineering hired a backhoe to dig for evidence of the corner. A 6 foot east-west by 10 foot north-south by 3 foot deep hole was dug, the center being on the centerline of north-south County Road D7 and in line with a field division east. No evidence of a monument was found in excavation. Computed the lost position for corner and found it to be:
on the centerline of north-south County Road D7
in line with a field division east
2650.60 feet from adjoining section corners

Also, excavated with the backhoe in the area of the E 1/16 of the SE 1/4 of Section 23 in search of the stone that was set in 1911 but found no evidence of it.

Analysis of the above information led the DNR Bureau of Engineering to conclude that the lost position marks the location of the corner. Set a 3/4" by 24" rebar with plastic cap stamped "MN DNR LS 17003" at the computed lost position for corner.