

CERTIFICATE OF LOCATION OF GOVERNMENT CORNER

NORTHEAST Corner of Section 23, Township 115 N., Range 44 W., 5th P.M.

STATE OF MINNESOTA, County of YELLOW MEDICINE

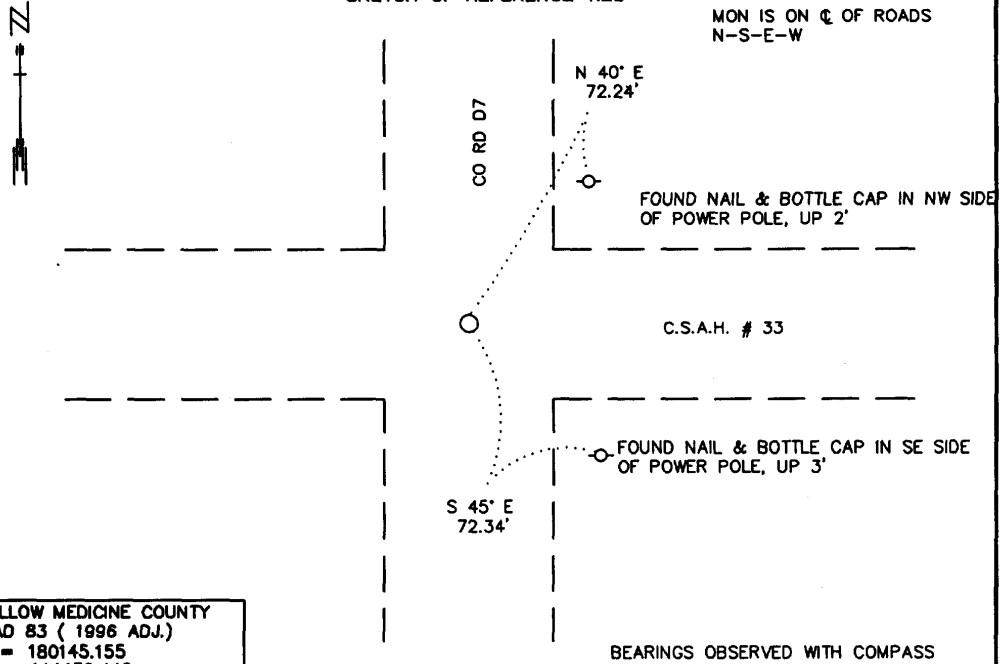
At the corner location shown on the sketch:

■ On 5/1/2000 found a BRIDGE SPIKE, DOWN 0.4', OVER A 6" X 6" CUT GRANITE STONE, DOWN 3.0'
DATE

left monument as found, lowered monument, removed monument (explain)

■ On 5/1/2000 Placed a 3/4" X 24" REBAR WITH A PLASTIC CAP STAMPED "MN DNR LS 17003",
DATE
DOWN 0.4' OVER STONE

SKETCH OF REFERENCE TIES



YELLOW MEDICINE COUNTY
 NAD 83 (1996 ADJ.)
 N = 180145.155
 E = 444436.440

Statement of evidence relative to this corner location is on back of page.

6/13/2000
 WMA00287

I hereby certify that this document and the data contained herein was prepared by me or under my direct supervision.

Russ W. Shopp 6/26/00
SIGNATURE DATE

License Number 17003

Land Surveyor, Professional Engineer
 County Surveyor, County Engineer

OFFICE OF THE COUNTY RECORDER
 County of Yellow Medicine

I hereby certify that this document was filed in the Co. Recorder's Office at 10:30 A.M. on the 5 day of July A.D., 2000

County Recorder Kay Nerdahl
 By *Dale Kohik*, Deputy

DOCUMENT NO. 223192

Northeast Corner of Section 23, Township 115 North, Range 44 West

The DNR Bureau of Engineering contacted the following for survey information:
Minnesota Secretary of State's Office
Yellow Medicine County Recorder's Office
Yellow Medicine County Highway Engineer's Office
Montevideo City Engineer's Office

- 1871 U. S. General Land Office notes obtained from the Secretary of State's Office show the corner marked with a wood post in a raised mound as per instructions.
- 1901 Surveyor's Record Book B contains John Norgaard's, County Surveyor, remonumentation notes for section corners in Yellow Medicine County. The following information is stated about corner on page 116:
found stake in the government mound
set a 6 inch by 6 inch by 24 inch long jasper granite level with the ground to mark corner
- 1911 October, pages 251 and 252 of a Surveyor's Record Book, obtained from the County Recorder's Office, contain surveys by John Norgaard, County Surveyor. Surveys show corner but do not indicate what kind of monument was found or set. The corner is shown:
2640 feet from the north quarter corner of Section 23
5280 feet from the northeast corner of Section 22
2649 feet from the east quarter corner of Section 23
- 1913 August, page 297 of a Surveyor's Record Book, obtained from the County Recorder's Office, contains a survey by John Norgaard. Survey shows corner but does not indicate what kind of monument was found or set. The corner is shown:
2637 feet from the north quarter corner of Section 23
5274 feet from the northeast corner of Section 22
- 1915 September, page 346 of a Surveyor's Record Book, obtained from the County Recorder's Office, contains a survey by L. S. Hoffman, Deputy County Surveyor. Survey shows that a jasper monument was found at corner. The following ties are shown to corner:
2 inch post, northwest, 34 feet
corner post, southeast, 43.6 feet
2650 feet from the east quarter corner of Section 23
5300 feet from the northeast corner of Section 26
- 1940 Section Corner Tie Book, obtained from the County Highway Engineer's Office, shows that a granite monument was found 2.5 feet deep at corner. The following ties are shown to corner:
second fence post, west-northwest, 88.5 feet
third fence post, north-northeast, 90.3 feet
telephone pole, south-southeast, 113.0 feet
telephone pole, southwest, 69.3 feet
- 2000 May 1, DNR Bureau of Engineering hired a backhoe to dig for evidence of the corner. A bridge spike was found down 0.4 of a foot over a 6" by 6" cut granite stone down 3.0 feet. Discarded the found bridge spike and set a 3/4" by 24" rebar with plastic cap stamped "MN DNR LS 17003" over the cut granite stone. Searched for but found no evidence of the record ties. The 6" by 6" cut granite stone was found to be:
5277.48 feet from the northeast corner of Section 22
5301.20 feet from the northeast corner of Section 26

Analysis of the above information led the DNR Bureau of Engineering to conclude that the 6" by 6" cut granite stone marks the location of the corner.