

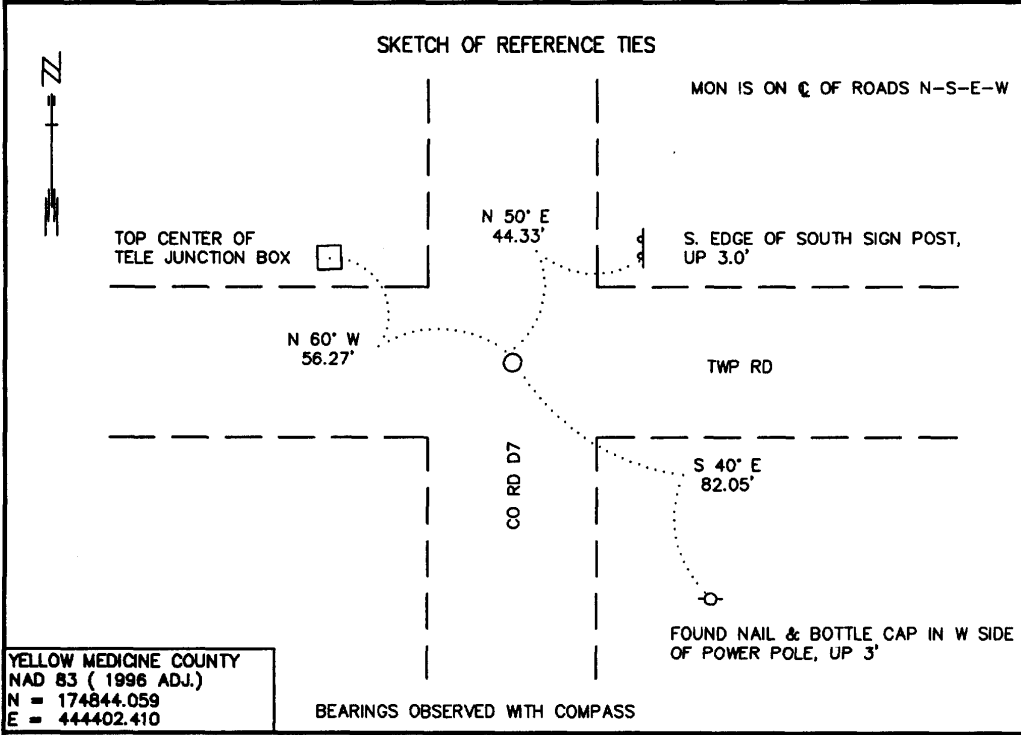
CERTIFICATE OF LOCATION OF GOVERNMENT CORNER

NORTHEAST Corner of Section 26, Township 115 N., Range 44 W., 5th P.M.

STATE OF MINNESOTA, County of YELLOW MEDICINE

At the corner location shown on the sketch:

- On 5/1/2000 found a 12" X 12" X 7" FIELD STONE, DOWN 0.7' (WITH A 5/8" X 24" REBAR
DATE
ALONGSIDE) OVER A 6" X 6" CUT GRANITE STONE, DOWN 2.1'
 left monument as found, lowered monument, removed monument (explain)
- On 5/1/2000 Placed a 3/4" X 24" REBAR WITH A PLASTIC CAP STAMPED "MN DNR LS 17003",
DATE
DOWN 0.1', OVER THE CUT GRANITE STONE



YELLOW MEDICINE COUNTY
 NAD 83 (1996 ADJ.)
 N = 174844.059
 E = 444402.410

Statement of evidence relative to this corner location is on back of page.

6/13/2000
 WMA00287

I hereby certify that this document and the data contained herein was prepared by me or under my direct supervision

Bruce W. Sheppard 6/26/00
SIGNATURE DATE

License Number 17003

- Land Surveyor, Professional Engineer
- County Surveyor, County Engineer

OFFICE OF THE COUNTY RECORDER
 County of Yellow Medicine

I hereby certify that this document was filed in the Co. Recorder's Office at 10:35 A.M. on the 5 day of July A.D., 2000

County Recorder Kay Nerdahl
 By Lois Rohak, Deputy

DOCUMENT NO. 223193

Northeast Corner of Section 26, Township 115 North, Range 44 West

The DNR Bureau of Engineering contacted the following for survey information:

Minnesota Secretary of State's Office
Yellow Medicine County Recorder's Office
Yellow Medicine County Highway Engineer's Office
Montevideo City Engineer's Office

- 1871 U. S. General Land Office notes obtained from the Secretary of State's Office show the corner marked with a wood post in a raised mound as per instructions.
- 1901 Surveyor's Record Book B contains John Norgaard's, County Surveyor, remonumentation notes for section corners in Yellow Medicine County. The following information is stated about corner on page 117:
found stake in the government mound
set a 6 inch by 6 inch by 24 inch long jasper granite level with the ground to mark corner
- 1911 October, page 251 of a Surveyor's Record Book, obtained from the County Recorder's Office, contains a survey by John Norgaard, County Surveyor. Survey shows corner but does not indicate what kind of monument was found or set. The corner is shown:
2649 feet from the east quarter corner of Section 23
1324.54 feet from a stone set for the E 1/16 of the SE 1/4 of Section 23
5280 feet from the northeast corner of Section 27
- 1915 September, page 346 of a Surveyor's Record Book, obtained from the County Recorder's Office, contains a survey by L.S. Hoffman, Deputy County Surveyor. Survey shows that a jasper monument was found at corner. The corner is shown:
2650 feet from the east quarter corner of Section 23
5300 feet from the northeast corner of Section 23
- No Date Section Corner Tie Book, obtained from the County Highway Engineer's Office, does not indicate what kind of monument was found or set at corner but the following ties are shown to it:
fifth fence post, east-southeast, 97.2 feet
mail box, west, 78.0 feet
15" Box elder, west-southwest, 94.2 feet
power pole, southeast, 83.0 feet
power pole, west-southwest, 57.4 feet
second fence post, southwest, 92.5 feet
corner fence post, southeast, 60.1 feet
- 2000 May 1, DNR Bureau of Engineering hired a backhoe to dig for evidence of the corner. A 12" by 12" by 7" field stone with a 5/8" by 24" rebar next to it was found down 0.7 of a foot. Also, found a 6" by 6" cut granite stone with a 5" by 5" field stone on its east side down 2.1 feet directly under the field stone. Discarded the 12" by 12" by 7" field stone and 5/8" by 24" rebar and set a 3/4" by 24" rebar with plastic cap stamped "MN DNR LS 17003" over the cut granite stone. Searched for but found no evidence of the record ties. The 6" by 6" cut granite stone was found to be:
at the intersection of the centerline of roads north, south, east, and west
5301.20 feet from the northeast corner of Section 23
5286.32 feet from the northeast corner of Section 27
Also, excavated with the backhoe in the area of the E 1/16 of the SE 1/4 of Section 23 in search of the stone that was set in 1911 but found no evidence of it.

Analysis of the above information led the DNR Bureau of Engineering to conclude that the 6" by 6" cut granite stone marks the location of the corner.