

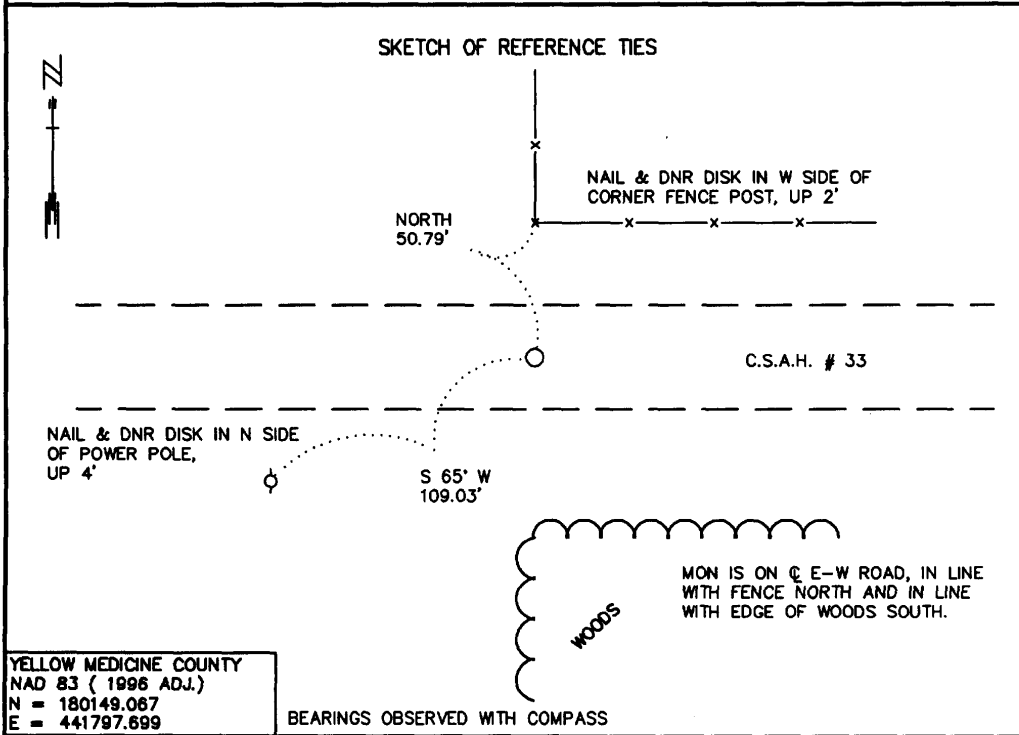
CERTIFICATE OF LOCATION OF GOVERNMENT CORNER

NORTH QUARTER Corner of Section 23, Township 115 N., Range 44 W., 5th P.M.

STATE OF MINNESOTA, County of YELLOW MEDICINE

At the corner location shown on the sketch:

- On _____ found a _____
DATE
- left monument as found, lowered monument, removed monument (explain)
- On 5/2/2000 Placed a 3/4" X 24" REBAR WITH A PLASTIC CAP STAMPED " MN DNR LS 17003"
DATE



YELLOW MEDICINE COUNTY
NAD 83 (1996 ADJ.)
N = 180149.067
E = 441797.699

BEARINGS OBSERVED WITH COMPASS

Statement of evidence relative to this corner location is on back of page.

6/13/2000
WMA00267

I hereby certify that this document and the data contained herein was prepared by me or under my direct supervision.

Russ W. Shippel 6/26/00
SIGNATURE DATE

License Number 17003

- Land Surveyor, Professional Engineer
 County Surveyor, County Engineer

OFFICE OF THE COUNTY RECORDER
County of Yellow Medicine

I hereby certify that this document was filed in the Co. Recorder's Office at 10:40 A.M. on the 5 day of July A.D., 2000

County Recorder Kay Nerdahl
By Eric Rohlf, Deputy

DOCUMENT NO. 223194

North Quarter Corner of Section 23, Township 115 North, Range 44 West

The DNR Bureau of Engineering contacted the following for survey information:

Minnesota Secretary of State's Office
Yellow Medicine County Recorder's Office
Yellow Medicine County Highway Engineer's Office
Montevideo City Engineer's Office

- 1871 U. S. General Land Office notes obtained from the Secretary of State's Office show the corner marked with a wood post in a raised mound as per instructions.
- 1911 October, pages 251 and 252 of a Surveyor's Record Book, obtained from the County Recorder's Office, contain surveys by John Norgaard, County Surveyor. Surveys state that corner was established on line and equal distance between section corners. An iron bolt was set to mark corner and is shown:
2640 feet from adjoining section corners
- 1913 August, page 297 of a Surveyor's Record Book, obtained from the County Recorder's Office, contains a survey by John Norgaard. Survey states the following:
I had two farmers measure the line last year and evidently they have made a mistake
The corner is shown on line and equal distance between section corners. A description of what kind of monument was set for corner is not indicated. The corner is shown:
2637 feet from adjoining section corners
- 2000 May 2, DNR Bureau of Engineering hired a backhoe to dig for evidence of the corner. A 6 foot north-south by 16 foot east-west by 3.5 foot deep hole was dug, the center being on the centerline of east-west County Road 33 and 4 feet east of a fence north. No evidence of a monument was found in excavation. Computed the lost position for corner and found it to be:
on the centerline of east-west County Road 33
in line with a fence north
in line with the west edge of wood s south
2638.74 feet from adjoining section corners

Analysis of the above information led the DNR Bureau of Engineering to conclude that the lost position marks the location of the corner. Set a 3/4" by 24" rebar with plastic cap stamped "MN DNR LS 17003" at the computed lost position for corner.