

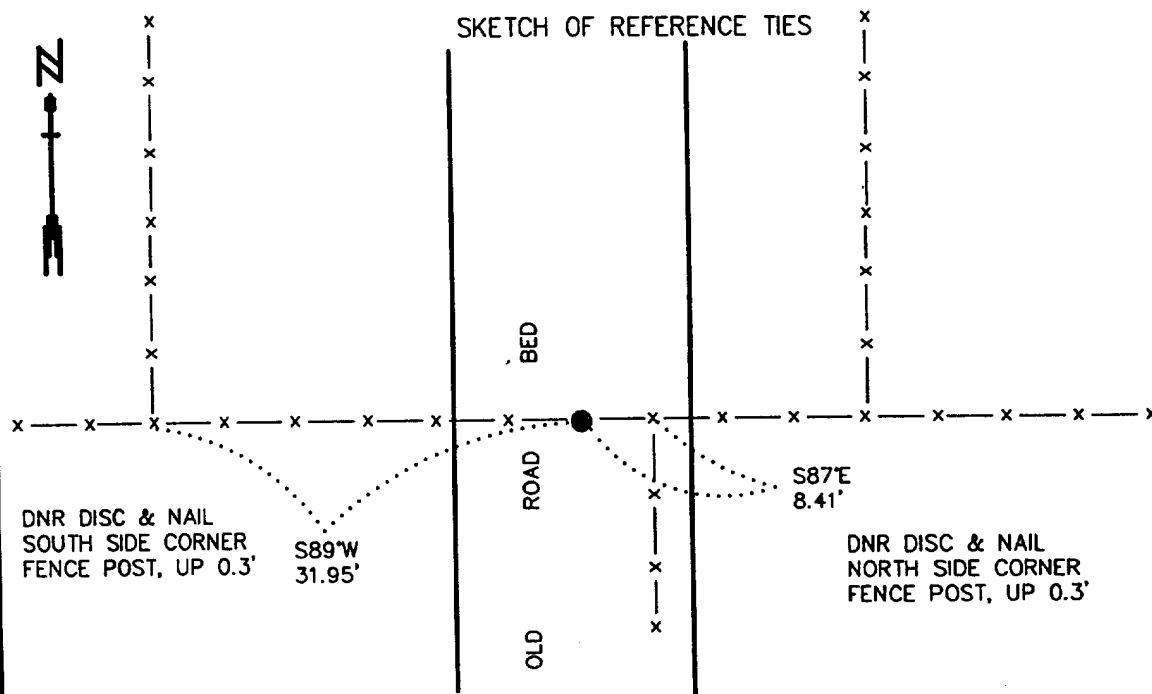
CERTIFICATE OF LOCATION OF GOVERNMENT CORNER

EAST QUARTER Corner of Section 18, Township 115 N., Range 46 W., 5th P.M.

STATE OF MINNESOTA, County of YELLOW MEDICINE

At the corner location shown on the sketch:

- On _____ found a _____
DATE
- left monument as found, lowered monument, removed monument (explain)
- On 5/17/2000 Placed a 3/4" x 24" REBAR WITH ALUMINUM CAP STAMPED
DATE "DNR SURVEY MARKER", FLUSH



1983 YELLOW MEDICINE
COUNTY COORDINATES
(1996 ADJUSTMENT)
N= 183364.819
E= 359634.404

BEARINGS OBSERVED WITH COMPASS

NOTE:
MONU IS ON CENTER
OF OLD ROAD BED

Statement of evidence relative to this corner location is on back of page.

6/12/2000
SNA02026

I hereby certify that this document and the data contained herein was prepared by me or under

my direct supervision
Bruce W. Sheppard 10/30/00
SIGNATURE DATE

License Number 17003

- Land Surveyor, Professional Engineer
- County Surveyor, County Engineer

OFFICE OF THE COUNTY RECORDER
County of Yellow Medicine

I hereby certify that this document was filed in the Co. Recorders Office at 8:00 A.M. on the _____ day of NOV. 2 - 2000 A.D., 20__

County Recorder Kaj Nordabe
By _____, Deputy
DOCUMENT NO. 224256

East Quarter Corner of Section 18, Township 115 North, Range 46 West

The Minnesota DNR Bureau of Engineering contacted the following for survey information:
Minnesota Secretary of State's Office
Yellow Medicine County Recorder's Office
Yellow Medicine County Highway Engineer's Office

1871 U. S. General Land Office notes, obtained from the Secretary of State's Office, show the corner marked with a wood post in a raised mound as per instructions.

No resurvey information was obtained for this corner.

2000 May 17, DNR Bureau of Engineering traversed to the area of corner and found its location to be at the intersection of the center of an old north-south road bed and fences east and west. Did not excavate area of corner in search of a monument because no records of a monument being set at corner since the GLO survey was found and area of corner appears to have been cut for road construction.

Computed a position for corner as follows:

on line between adjoining section corners
in line with fences east and west

The computed position for corner was found to be:

on the center of the old north-south road bed
2634.02 feet from the northeast corner of Section 18
2643.08 feet from the southeast corner of Section 18
4.53 feet north of the lost position

Analysis of the above information led the DNR Bureau of Engineering to conclude that the computed position for corner on line between adjoining section corners and in line with fences east and west marks the obliterated location of the corner. Set a 3/4 inch by 24 inch rebar with an aluminum cap stamped "DNR SURVEY MARKER" at the computed position for corner.