

# CERTIFICATE OF LOCATION OF GOVERNMENT CORNER

NORTHEAST Corner of Section 20, Township 115 N., Range 46 W., 5th P.M.

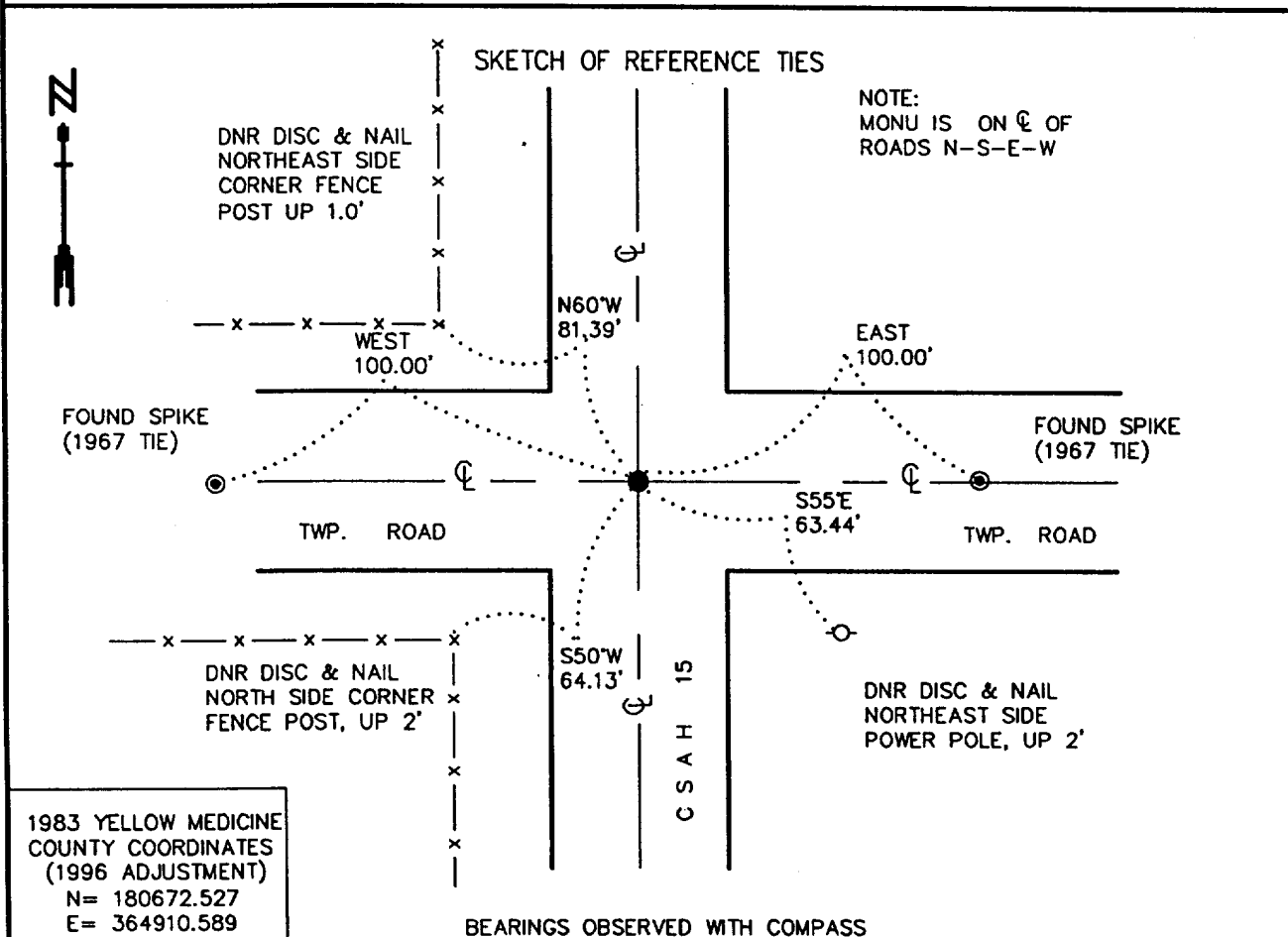
STATE OF MINNESOTA, County of YELLOW MEDICINE

At the corner location shown on the sketch:

On 5/8/2000 found a 12" LONG BRIDGE SPIKE, DOWN 0.8'  
DATE

left monument as found,  lowered monument,  removed monument (explain)

On 5/8/2000 Placed a 3/4" x 24" REBAR WITH ALUMINUM CAP STAMPED  
DATE  
"DNR SURVEY MARKER", DOWN 0.1'



Statement of evidence relative to this corner location is on back of page.

6/12/2000  
SNA02026

I hereby certify that this document and the data contained herein was prepared by me or under my direct supervision.

Bruce W. Shappard 10/30/00  
SIGNATURE DATE

License Number 17003

- Land Surveyor,  Professional Engineer
- County Surveyor,  County Engineer

OFFICE OF THE COUNTY RECORDER  
County of Yellow Medicine

I hereby certify that this document was filed in the Co. Recorders Office at 8:05 A.M. on the NOV. 2 - 2000 day of NOV. 2 - 2000 A.D., 20

County Recorder Ray Nordahl  
By \_\_\_\_\_, Deputy  
DOCUMENT NO. 224257

Northeast Corner of Section 20, Township 115 North, Range 46 West

The Minnesota DNR Bureau of Engineering contacted the following for survey information:  
Minnesota Secretary of State's Office  
Yellow Medicine County Recorder's Office  
Yellow Medicine County Highway Engineer's Office

- 1871 U. S. General Land Office notes, obtained from the Secretary of State's Office, show the corner marked with a wood post in a raised mound as per instructions.
- 1901 Surveyor's Record Book B, obtained from the County Recorder's Office, contains John Norgaard's, County Surveyor, remonumentation notes for section corners in Yellow Medicine County. The following information is stated about corner on page 131:  
found stake in the government mound  
set a 6 inch by 6 inch by 24 inch long jasper granite 2 inches above the ground to mark corner
- 1943 Section Corner Tie Book, obtained from the County Highway Engineer's Office, shows that a granite monument was found 1 foot deep at corner. The following ties are shown to corner:  
second fence post, northwest, 80.7 feet  
second steel fence post, southwest, 89.5 feet  
second fence post, southeast, 99.0 feet
- 1967 Section Corner Tie Book, obtained from the County Highway Engineer's Office, shows that a granite monument was found 1 foot deep at corner. The following ties are shown to corner:  
spike in road, east, 100.0 feet  
spike in road, west, 100.0 feet  
power pole, southeast, 63.0 feet  
fence post, southwest, 69.9 feet  
fence post, northeast, 91.3 feet  
second steel fence post, northeast, 98.9 feet
- 1967 October 6, a page in a field notebook for County State Aid Highway Number 15, obtained from the County Highway Engineer's Office, shows that a granite monument was found down 1 foot at corner. The following ties are shown to corner:  
at PI Station 166+04.1  
spike in road, east, 100.00 feet  
spike in road, west, 100.00 feet  
cap in power pole, southeast, 63.00 feet  
cap in fence post, southwest, 69.90 feet  
first steel fence post, northeast, 91.30 feet  
second steel fence post, northwest, 98.90 feet  
The construction plan sheets for County State Aid Highway Number 15 show the area of the corner to be in a cut section of about 2.5 feet.
- 2000 May 8, DNR Bureau of Engineering found a 12 inch long bridge spike at corner down 0.8 of a foot and on the center line of north-south bituminous surfaced County State Aid Highway 15 and in line with the center lines of roads east and west. Removed the bridge spike and in its hole probed to a depth of 3 feet but did not encounter any large stones. No further excavation was conducted for the record granite monument. Searched for and found record ties as shown on the sketch of reference ties.

Analysis of the above information led the DNR Bureau of Engineering to conclude that the found bridge spike marks the location of the corner. Reset the bridge spike and placed a 3/4 inch by 24 inch rebar with aluminum cap stamped "DNR SURVEY MARKER" over it.