

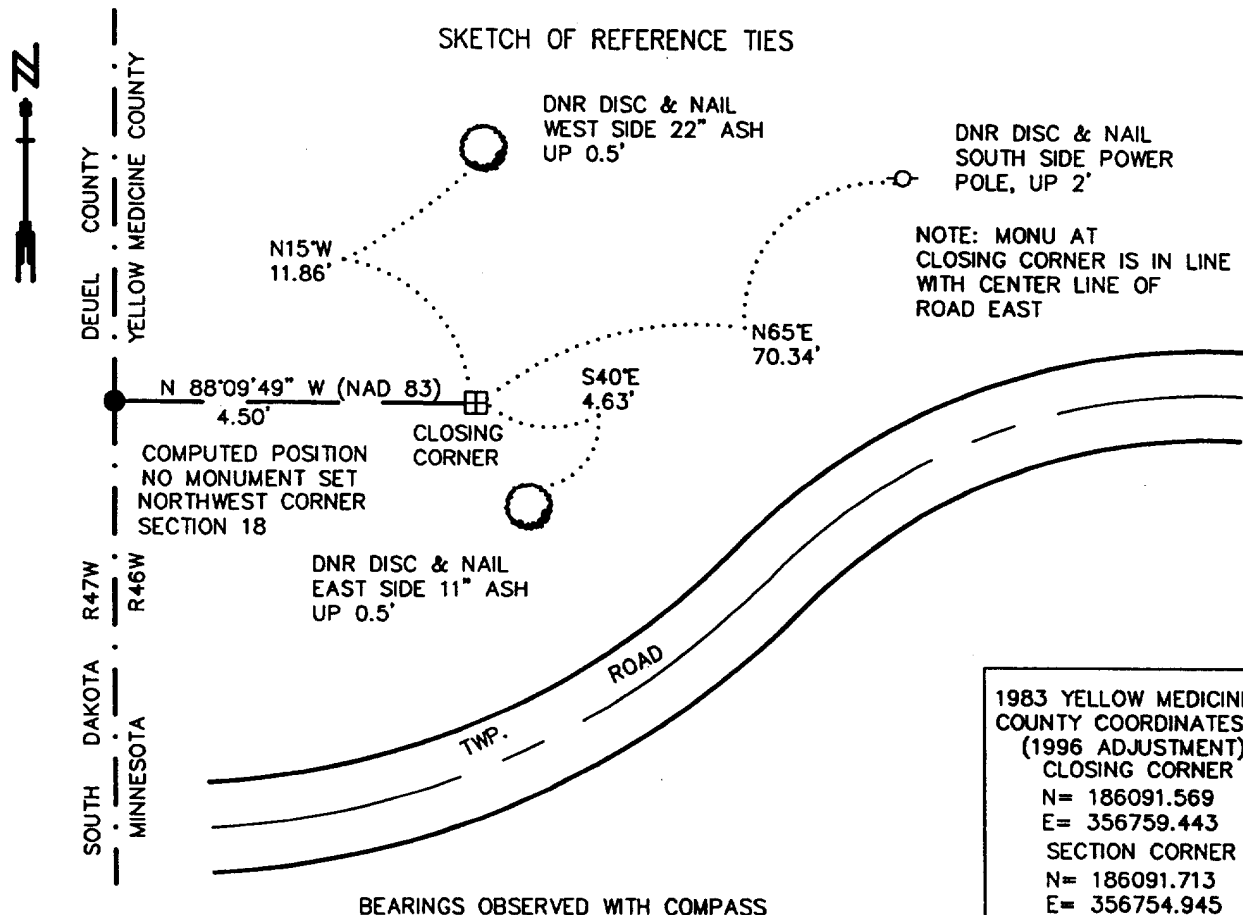
# CERTIFICATE OF LOCATION OF GOVERNMENT CORNER

NORTHWEST Corner of Section 18, Township 115 N., Range 46 W., 5th P.M.

STATE OF MINNESOTA, County of YELLOW MEDICINE

At the corner location shown on the sketch:

- On 5/8/2000 found a 6" x 6" CUT GRANITE STONE, UP 0.3', AT CLOSING CORNER  
DATE
- left monument as found,       lowered monument,       removed monument (explain)
- On \_\_\_\_\_ Placed a \_\_\_\_\_  
DATE



1983 YELLOW MEDICINE COUNTY COORDINATES (1996 ADJUSTMENT)  
 CLOSING CORNER  
 N= 186091.569  
 E= 356759.443  
 SECTION CORNER  
 N= 186091.713  
 E= 356754.945

Statement of evidence relative to this corner location is on back of page.

6/12/2000  
 SNA02026

I hereby certify that this document and the data contained herein was prepared by me or under my direct supervision.

Bruce W. Sheppard 10/30/00  
SIGNATURE DATE

License Number 17003  
 Land Surveyor,       Professional Engineer  
 County Surveyor,       County Engineer

OFFICE OF THE COUNTY RECORDER  
 County of Yellow Medicine

I hereby certify that this document was filed in the Co. Recorders Office at 8:10 A.M. on the NOV. 2 - 2000 day of NOV. 2 - 2000 A.D., 20\_\_\_\_  
 County Recorder Kay Verdabe  
 By \_\_\_\_\_, Deputy  
 DOCUMENT NO. 224258

**Northwest Corner of Section 18, Township 115 North, Range 46 West**

The Minnesota DNR Bureau of Engineering contacted the following for survey information:

Minnesota Secretary of State's Office  
Yellow Medicine County Recorder's Office  
Yellow Medicine County Highway Engineer's Office  
South Dakota Historical Society's Office in Pierre  
Deuel County Register of Deed's Office

- 1871 U. S. General Land Office notes, obtained from the Minnesota Secretary of State's Office, show that a closing corner was established on the western boundary of the state. The closing corner was marked with a wood post in a raised mound as per instructions. The closing corner is shown:  
13.78 chains (909.48 feet) South of Mile Post 36
- 1901 Surveyor's Record Book B, obtained from the Yellow Medicine County Recorder's Office, contains John Norgaard's, County Surveyor, remonumentation notes for section corners in Yellow Medicine County. The following information is stated about corner on page 223:  
A) located on the government distance 5280 feet south of the northwest corner of Section 7 and on line with Mile Post Number 36 and Dakota monument 176 feet south of the northwest corner of Section 18  
B) set a 6 inch by 6 inch by 24 inch long jasper granite to mark corner
- 2000 May 8, DNR Bureau of Engineering traversed to the area of the corner and found a 6 inch by 6 inch cut granite stone up 0.3 of a foot. The cut granite stone was found to be:  
in line with the westerly projection of the center line of a Township Road east  
913.49 feet from Mile Post Number 36  
4.50 feet east of a straight line from Mile Post Number 36 to Mile Post Number 37

Analysis of the above information led the DNR Bureau of Engineering to conclude that the found 6 inch by 6 inch cut granite stone marks the location of the closing corner, so computed the position for the northwest corner of Section 18 at the intersection of the following lines:

- A) on line between Mile Post Number 36 and Mile Post Number 37  
B) on the westerly extension of a line from the northeast corner of Section 18 thru the cut granite stone at the closing corner

A monument was NOT set to mark the location of the northwest corner of Section 18.