

# CERTIFICATE OF LOCATION OF GOVERNMENT CORNER

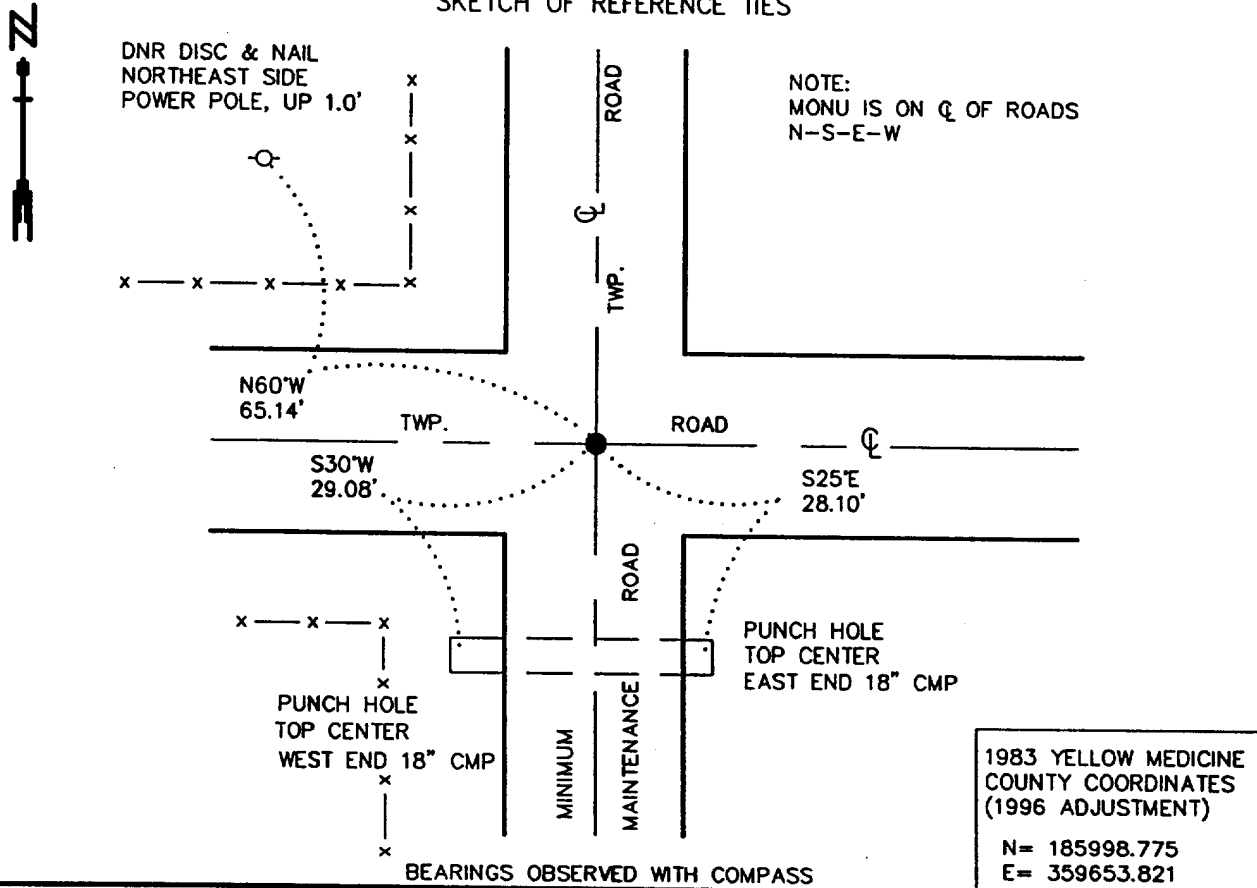
NORTHEAST Corner of Section 18, Township 115 N., Range 46 W., 5th P.M.

STATE OF MINNESOTA, County of YELLOW MEDICINE

At the corner location shown on the sketch:

- On 5/15/2000 found a 6" x 6" CUT GRANITE STONE, DOWN 1.3'  
DATE
- left monument as found,       lowered monument,       removed monument (explain)
- On 5/15/2000 Placed a 3/4" x 12" REBAR WITH ALUMINUM CAP STAMPED  
DATE  
"DNR SURVEY MARKER", DOWN 0.3', OVER STONE

### SKETCH OF REFERENCE TIES



Statement of evidence relative to this corner location is on back of page.

6/12/2000  
SNS02026

I hereby certify that this document and the data contained herein was prepared by me or under my direct supervision

Bruce W. Sheppard      10/30/00  
SIGNATURE      DATE

License Number 17003

- Land Surveyor,       Professional Engineer
- County Surveyor,       County Engineer

OFFICE OF THE COUNTY RECORDER  
County of Yellow Medicine

I hereby certify that this document was filed in the Co. Recorders Office at 8:15 A.M. on the 2 day of NOV. 2 - 2000 A.D., 20

County Recorder Key Nordahl  
By \_\_\_\_\_, Deputy  
DOCUMENT NO. 224259

Northeast Corner of Section 18, Township 115 North, Range 46 West

The Minnesota DNR Bureau of Engineering contacted the following for survey information:  
Minnesota Secretary of State's Office  
Yellow Medicine County Recorder's Office  
Yellow Medicine County Highway Engineer's Office

- 1871 U. S. General Land Office notes, obtained from the Secretary of State's Office, show the corner marked with a wood post in a raised mound as per instructions.
- 1901 Surveyor's Record Book B, obtained from the County Recorder's Office, contains John Norgaard's, County Surveyor, remonumentation notes for section corners in Yellow Medicine County. The following information is stated about corner on page 130:  
found the government mound and pits  
set a 6 inch by 6 inch by 24 inch long jasper granite 3 inches above the ground to mark corner
- 1916 March, page 368 of a Surveyor's Record Book, obtained from the County Recorder's Office, contains a survey by John Norgaard, County Surveyor. Survey states that a jasper stone monument was found at corner. The corner is shown:  
2628 feet from the north quarter corner of Section 17
- 1921 August, page 449 of a Surveyor's Record Book, obtained from the County Recorder's Office, contains a survey by John Norgaard, County Surveyor. Survey shows corner but does not indicate what kind of monument was found or set. The corner is shown:  
2628 feet from the north quarter corner of Section 17
- 2000 May 15, DNR Bureau of Engineering hired a backhoe to dig for evidence of the corner. A 6 inch by 6 inch cut granite stone was found down 1.3 feet. Set a 3/4 inch by 12 inch rebar with aluminum cap stamped "DNR SURVEY MAKER" over the cut granite stone and found it to be:  
at the intersection of the center lines of roads north, south, east and west  
2630.84 feet from the north quarter corner of Section 17

Analysis of the above information led the DNR Bureau of Engineering to conclude that the found 6 inch by 6 inch cut granite stone marks the original location of the corner.