

CERTIFICATE OF LOCATION OF GOVERNMENT CORNER

WEST QUARTER Corner of Section 18, Township 115 N., Range 46 W., 5th P.M.

STATE OF MINNESOTA, County of YELLOW MEDICINE

At the corner location shown on the sketch:

On _____ found a _____
DATE

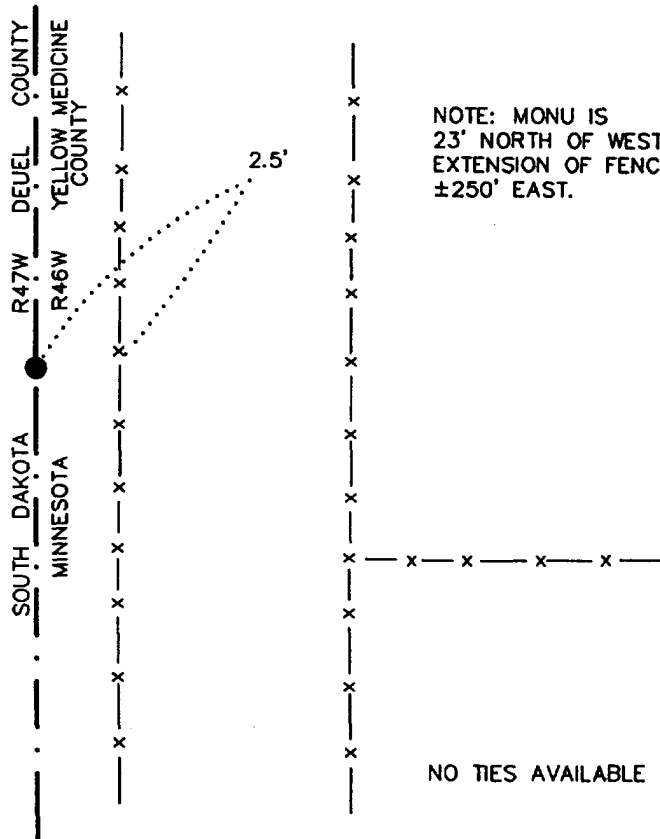
left monument as found, lowered monument, removed monument (explain)

On 5/17/2000 Placed a 3/4" x 24" REBAR WITH ALUMINUM CAP STAMPED
DATE

"DNR SURVEY MARKER", DOWN 1.0'



SKETCH OF REFERENCE TIES



NOTE: MONU IS
23' NORTH OF WESTERLY
EXTENSION OF FENCE
±250' EAST.

NO TIES AVAILABLE

1983 YELLOW MEDICINE
COUNTY COORDINATES
(1996 ADJUSTMENT)
N= 183447.558
E= 356744.228

Statement of evidence relative to this corner location is on back of page.

6/12/2000
SNA02026

I hereby certify that this document and the data contained herein was prepared by me or under my direct supervision.

Bruce W. Shepperd 10/30/00
SIGNATURE DATE

License Number 17003

- Land Surveyor, Professional Engineer
- County Surveyor, County Engineer

OFFICE OF THE COUNTY RECORDER
County of Yellow Medicine

I hereby certify that this document was filed in the Co. Recorders Office at 8:25 A.M. on the _____ day of NOV. 2 - 2000 A.D., 20__

County Recorder Kay Nordahl

By _____, Deputy

DOCUMENT NO. 224261

West Quarter Corner of Section 18, Township 115 North, Range 46 West

The Minnesota DNR Bureau of Engineering contacted the following for survey information:

Minnesota Secretary of State's Office

Yellow Medicine County Recorder's Office

Yellow Medicine County Highway Engineer's Office

South Dakota Historical Society's Office in Pierre

Deuel County Register of Deed's Office

The west quarter corner of Section 18 was not set during the U. S. General Land Office survey.

No resurvey information was obtained for this corner.

2000 May 17, DNR Bureau of Engineering computed a position for corner as follows:

equal distance from adjoining section corners for Section 18

on line between Mile Post Number 36 and Mile Post Number 37

The computed position for corner was found to be:

2644.18 feet from adjoining section corners

in a cultivated field

2.5 feet west of a north-south fence

Analysis of the above information led the DNR Bureau of Engineering to conclude that the computed position equal distance from adjoining section corners for Section 18 and on line between Mile Post Number 36 and Mile Post Number 37 marks the location of the corner. Set a 3/4" by 24" rebar with aluminum cap stamped "DNR SURVEY MARKER" at the computed position for corner.