

CERTIFICATE OF LOCATION OF GOVERNMENT CORNER

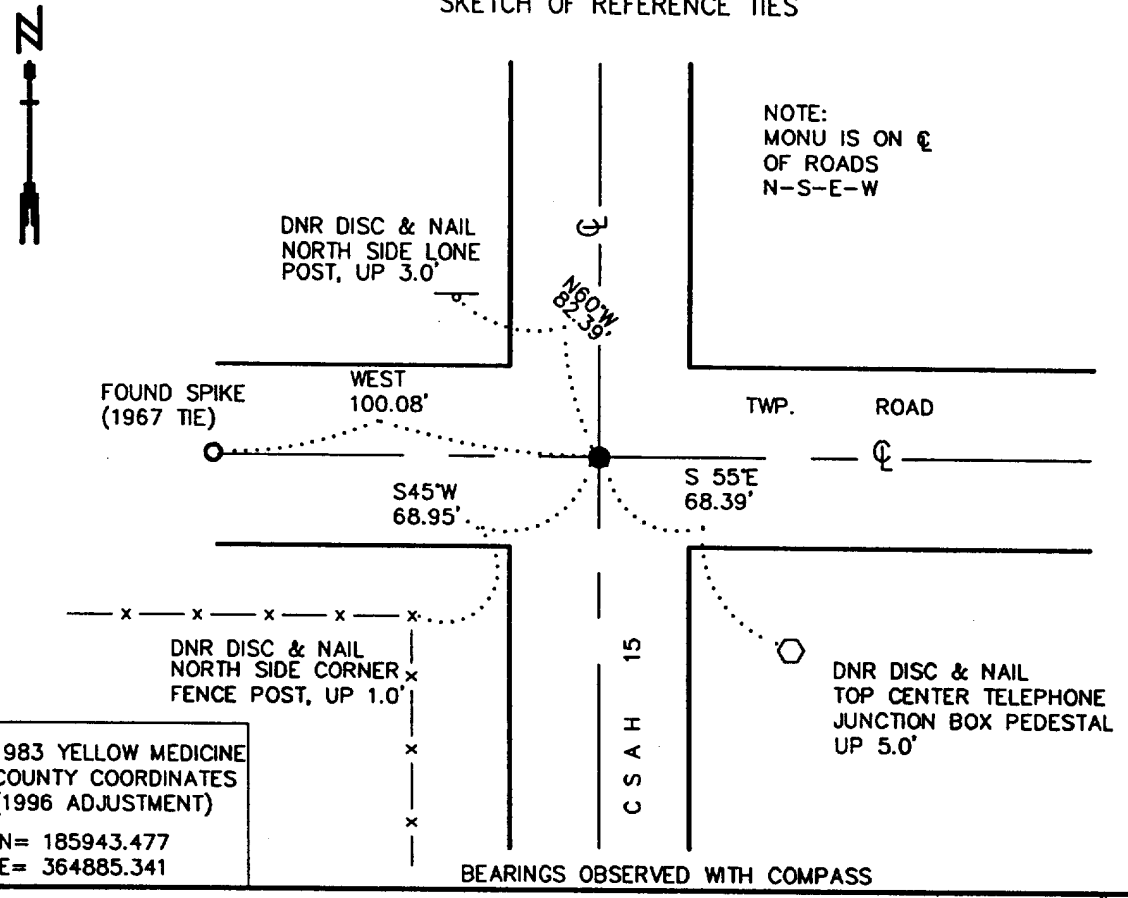
NORTHEAST Corner of Section 17, Township 115 N., Range 46 W., 5th P.M.

STATE OF MINNESOTA, County of YELLOW MEDICINE

At the corner location shown on the sketch:

- On 5/8/2000 found a 10" LONG BRIDGE SPIKE, DOWN 0.8'
DATE
- left monument as found, lowered monument, removed monument (explain)
- On 5/8/2000 Placed a 3/4" x 24" REBAR WITH ALUMINUM CAP STAMPED
DATE
"DNR SURVEY MARKER", DOWN 0.1'

SKETCH OF REFERENCE TIES



Statement of evidence relative to this corner location is on back of page.

6/11/2000
SNA02026

I hereby certify that this document and the data contained herein was prepared by me or under my direct supervision.

Bruce W. Sheppard 10/30/00
SIGNATURE DATE

License Number 17003

Land Surveyor, Professional Engineer
 County Surveyor, County Engineer

OFFICE OF THE COUNTY RECORDER
County of Yellow Medicine

I hereby certify that this document was filed in the Co. Recorders Office at 8:35 A.M. on the NOV. 2 day of 2000 A.D., 2000

County Recorder Kay Verdahl
By _____, Deputy

DOCUMENT NO. 224263

Northeast Corner of Section 17, Township 115 North, Range 46 West

The Minnesota DNR Bureau of Engineering contacted the following for survey information:
Minnesota Secretary of State's Office
Yellow Medicine County Recorder's Office
Yellow Medicine County Highway Engineer's Office

- 1871 U. S. General Land Office notes, obtained from the Secretary of State's Office, show the corner marked with a wood post in a raised mound as per instructions.
- 1901 Surveyor's Record Book B, obtained from the County Recorder's Office, contains John Norgaard's, County Surveyor, remonumentation notes for section corners in Yellow Medicine County. The following information is stated about corner on page 130:
found stake in the government mound
set a 6 inch by 6 inch by 24 inch long jasper granite level with the ground to mark corner
- 1916 March, page 368 of a Surveyor's Record Book, obtained from the County Recorder's Office, contains a survey by John Norgaard, County Surveyor. Survey states that a jasper stone monument was found at corner. The corner is shown:
2600 feet from the north quarter corner of Section 17
- 1921 August, page 449 of a Surveyor's Record Book, obtained from the County Recorder's Office, contains a survey by John Norgaard, County Surveyor. Survey shows corner but does not indicate what kind of monument was found or set. The corner is shown:
2600 feet from the north quarter corner of Section 17
- No Date Section Corner Tie Book, obtained from the County Highway Engineer's Office, does not indicate what kind of monument was found or set at corner but the following ties are shown to it:
telephone pole, northwest, 45.2 feet
fence post, southwest, 62.0 feet
fence post, southeast, 48.9 feet
- 1967 Section Corner Tie Book, obtained from the County Highway Engineer's Office, shows that a granite monument was found 18 inches deep at corner. The following ties are shown to corner:
spike in road, east, 100.2 feet
spike in road, west, 100.0 feet
power pole, northwest, 46.0 feet
fence post, west-southwest, 83.9 feet
fence post, east-southeast, 87.1 feet
- 1967 October 6, a page in a field notebook for County State Aid Highway Number 15, obtained from the County Highway Engineer's Office, shows that a granite monument was found down 18 inches at corner. The following ties are shown to corner:
at PI Station 218+77.1
spike in road, east, 100.2 feet
spike in road, west, 100.00 feet
cap in power pole, northwest, 46.00 feet
cap in fence post, west-southwest, 83.90 feet
cap in fence post, east-southeast, 87.10 feet
The construction plan sheets for County State Aid Highway Number 15 show the area of the corner to be in a fill section.
- 2000 May 8, DNR Bureau of Engineering found a 10 inch long bridge spike at corner down 0.8 of a foot and on the center line of north-south bituminous surfaced County State Aid Highway 15. Removed the bridge spike and in its hole probed to a depth of 3 feet but did not encounter any large stones. No further excavation was conducted for the record granite monument. Searched for and found one record tie as shown on the sketch of reference ties. The bridge spike was found to be:
2600.99 feet from the north quarter corner of Section 17

Analysis of the above information led the DNR Bureau of Engineering to conclude that the found bridge spike marks the location of the corner. Discarded the bridge spike and set a 3/4 inch by 24 inch rebar with aluminum cap stamped "DNR SURVEY MARKER" in its place.