

# CERTIFICATE OF LOCATION OF GOVERNMENT CORNER

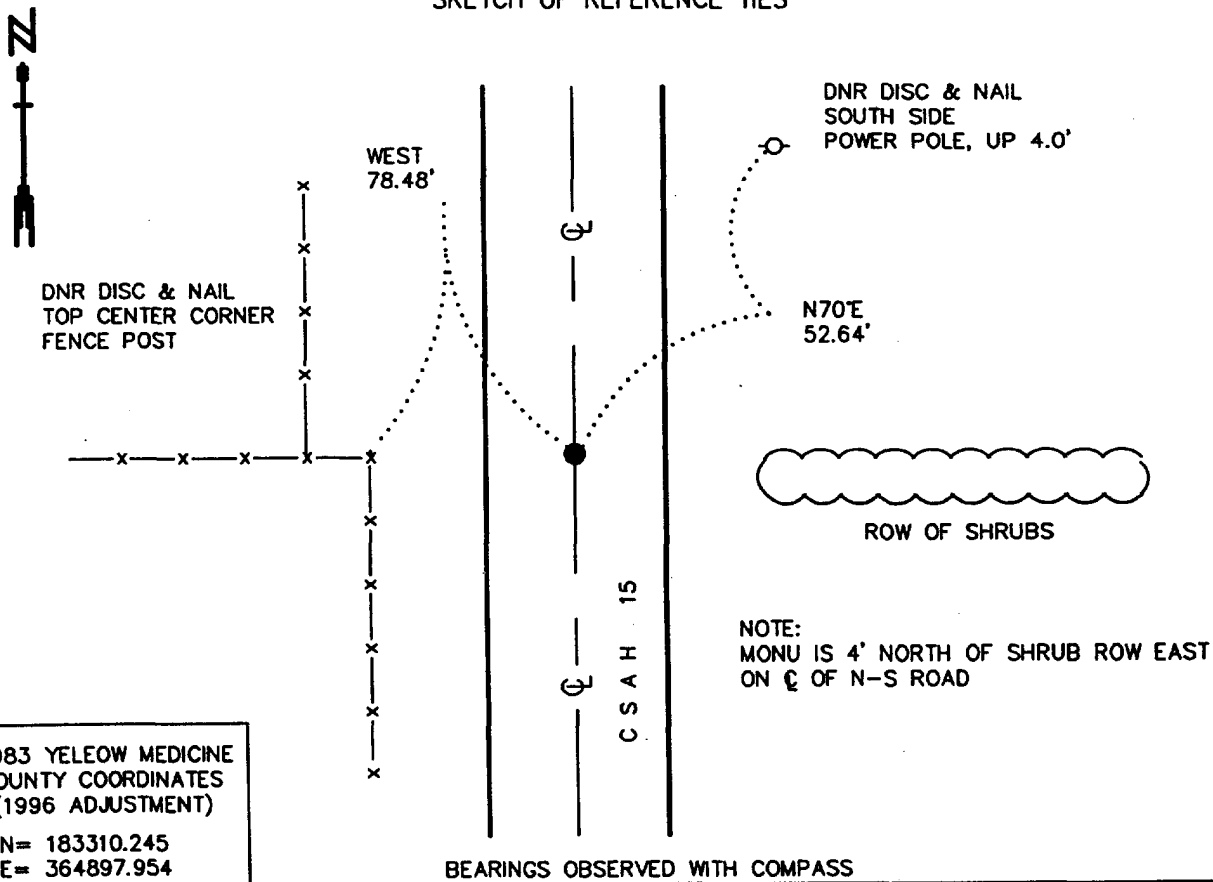
EAST QUARTER Corner of Section 17, Township 115 N., Range 46 W., 5th P.M.

STATE OF MINNESOTA, County of YELLOW MEDICINE

At the corner location shown on the sketch:

- On \_\_\_\_\_ found a \_\_\_\_\_  
DATE
- left monument as found,  lowered monument,  removed monument (explain)
- On 5/17/2000 Placed a 3/4" x 24" REBAR WITH ALUMINUM CAP STAMPED  
DATE "DNR SURVEY MARKER", FLUSH

### SKETCH OF REFERENCE TIES



1983 YELEOW MEDICINE  
COUNTY COORDINATES  
(1996 ADJUSTMENT)  
N= 183310.245  
E= 364897.954

BEARINGS OBSERVED WITH COMPASS

Statement of evidence relative to this corner location is on back of page.

6/11/2000  
SNA02026

I hereby certify that this document and the data contained herein was prepared by me or under my direct supervision.

Russ W. Sheppard 10/30/00  
SIGNATURE DATE

License Number 17003

- Land Surveyor,  Professional Engineer
- County Surveyor,  County Engineer

OFFICE OF THE COUNTY RECORDER  
County of Yellow Medicine

I hereby certify that this document was filed in the Co. Recorders Office at 8:40 A.M. on the \_\_\_\_\_ day of NOV. 2 - 2000 A.D., 20\_\_

County Recorder Kay Herdabe  
By \_\_\_\_\_, Deputy  
DOCUMENT NO. 224264

East Quarter Corner of Section 17, Township 115 North, Range 46 West

The Minnesota DNR Bureau of Engineering contacted the following for survey information:

Minnesota Secretary of State's Office

Yellow Medicine County Recorder's Office

Yellow Medicine County Highway Engineer's Office

1871 U. S. General Land Office notes, obtained from the Secretary of State's Office, show the corner marked with a wood post in a raised mound as per instructions.

No resurvey information was obtained for this corner.

2000 May 17, DNR Bureau of Engineering traversed to the area of corner and found its location to be at the intersection of the center line of north-south County State Aid Highway Number 15 with a fence west. Scanned the area of corner with an electronic metal detector but no metal attraction was obtained. Did not excavate area of corner in search of a monument because no records of a monument being set at corner since the GLO survey was found.

Computed a position for corner as follows:

on line between adjoining section corners

in line with a fence west

The computed position for corner was found to be:

on the center line of north-south County State Aid Highway Number 15

2633.26 feet from the northeast corner of Section 17

2637.75 feet from the southeast corner of Section 17

2.25 feet north of the lost position

Analysis of the above information led the DNR Bureau of Engineering to conclude that the computed position for corner on line between adjoining section corners and in line with a fence west marks the obliterated location of the corner. Set a 3/4 inch by 24 inch rebar with an aluminum cap stamped "DNR SURVEY MARKER" at the computed position for corner.