

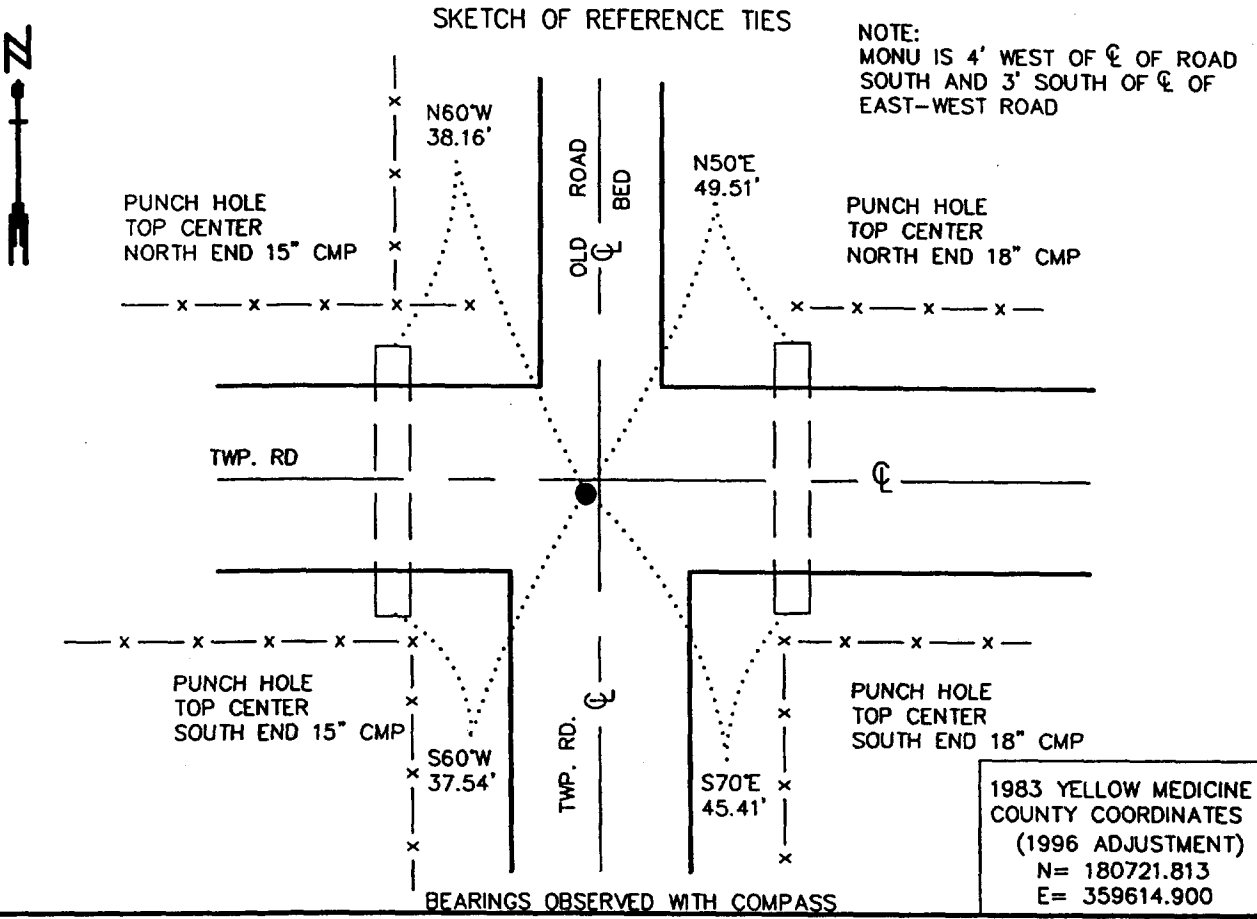
CERTIFICATE OF LOCATION OF GOVERNMENT CORNER

NORTHEAST Corner of Section 19, Township 115 N., Range 46 W., 5th P.M.

STATE OF MINNESOTA, County of YELLOW MEDICINE

At the corner location shown on the sketch:

- On 5/15/2000 found a 6" x 6" CUT GRANITE STONE, DOWN 2.5'
DATE
- left monument as found, lowered monument, removed monument (explain)
- On 5/15/2000 Placed a 3/4" x 24" REBAR WITH ALUMINUM CAP STAMPED
DATE
"DNR SURVEY MARKER", DOWN 0.3', OVER STONE



Statement of evidence relative to this corner location is on back of page. 6/12/2000
SNA02026

I hereby certify that this document and the data contained herein was prepared by me or under my direct supervision

Bruce W. Shippel 10/30/00
SIGNATURE DATE

License Number 17003

Land Surveyor, Professional Engineer
 County Surveyor, County Engineer

OFFICE OF THE COUNTY RECORDER
County of Yellow Medicine

I hereby certify that this document was filed in the Co. Recorders Office at 8:45 A .M. on the NOV. 2 - 2000 day of NOV. 2 - 2000 A.D., 2000

County Recorder Kay Nordmark
By 224265, Deputy

DOCUMENT NO. 224265

Northeast Corner of Section 19, Township 115 North, Range 46 West

The Minnesota DNR Bureau of Engineering contacted the following for survey information:

Minnesota Secretary of State's Office

Yellow Medicine County Recorder's Office

Yellow Medicine County Highway Engineer's Office

- 1871 U. S. General Land Office notes, obtained from the Secretary of State's Office, show the corner marked with a wood post in a raised mound as per instructions.
- 1901 Surveyor's Record Book B, obtained from the County Recorder's Office, contains John Norgaard's, County Surveyor, remonumentation notes for section corners in Yellow Medicine County. The following information is stated about corner on page 131:
found stake in the government mound
set a 6 inch by 6 inch by 24 inch long jasper granite level with the ground to mark corner
- 1943 Section Corner Tie Book, obtained from the County Highway Engineer's Office, does not indicate what kind of monument was found or set at corner but the following ties are shown to it:
third fence post, southeast, 72.3 feet
corner fence post, northeast, 49.5 feet
second fence post, southeast, 80.4 feet
third fence post, southwest, 85.3 feet
- 2000 May 15, DNR Bureau of Engineering hired a backhoe to dig for evidence of the corner. A 6 inch by 6 inch cut granite stone was found down 2.5 feet. Searched for but found no evidence of the record ties. Set a 3/4 inch by 24 inch rebar with aluminum cap stamped "DNR SURVEY MAKER" over the cut granite stone and found it to be:
3 feet south of the center line of an east-west Township Road
4 feet west of the center line of a Township Road south

Analysis of the above information led the DNR Bureau of Engineering to conclude that the found 6 inch by 6 inch cut granite stone marks the original location of the corner.