

CERTIFICATE OF LOCATION OF GOVERNMENT CORNER

NORTHWEST Corner of Section 19, Township 115 N., Range 46 W., 5th P.M.

STATE OF MINNESOTA, County of YELLOW MEDICINE

At the corner location shown on the sketch:

On 5/15/2000 found a 6" x 6" CUT GRANITE STONE, DOWN 0.5', AT CLOSING CORNER
DATE

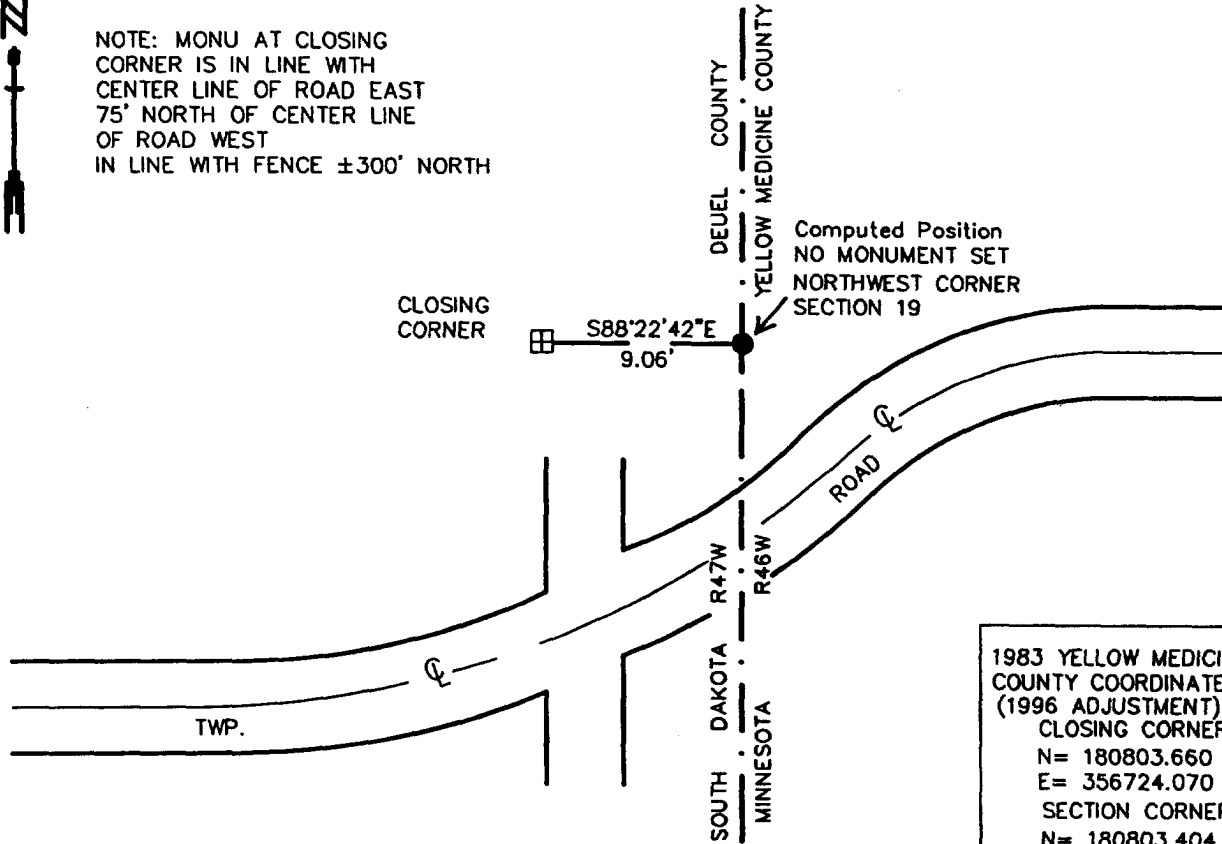
left monument as found, lowered monument, removed monument (explain)

On _____ Placed a _____
DATE

SKETCH OF REFERENCE TIES



NOTE: MONU AT CLOSING CORNER IS IN LINE WITH CENTER LINE OF ROAD EAST 75' NORTH OF CENTER LINE OF ROAD WEST IN LINE WITH FENCE ±300' NORTH



1983 YELLOW MEDICINE COUNTY COORDINATES (1996 ADJUSTMENT)
CLOSING CORNER
N= 180803.660
E= 356724.070
SECTION CORNER
N= 180803.404
E= 356733.130

BEARING IS IN COUNTY ORIENTATION

Statement of evidence relative to this corner location is on back of page.

6/12/2000
SNA02026

I hereby certify that this document and the data contained herein was prepared by me or under my direct supervision

Bruce W. Sheppard 10/30/00
SIGNATURE DATE

License Number 17003

- Land Surveyor, Professional Engineer
 County Surveyor, County Engineer

OFFICE OF THE COUNTY RECORDER
County of Yellow Medicine

I hereby certify that this document was filed in the Co. Recorders Office at 9:00 A.M. on the _____ day of NOV. 2 - 2000 A.D., 20__

County Recorder Kag Nordabe
By _____, Deputy
DOCUMENT NO. 224268

Northwest Corner of Section 19, Township 115 North, Range 46 West

The Minnesota DNR Bureau of Engineering contacted the following for survey information:

Minnesota Secretary of State's Office
Yellow Medicine County Recorder's Office
Yellow Medicine County Highway Engineer's Office
South Dakota Historical Society's Office in Pierre
Deuel County Register of Deed's Office

- 1871 U. S. General Land Office notes, obtained from the Minnesota Secretary of State's Office, show that a closing corner was established on the western boundary of the state. The closing corner was marked with a wood post in a raised mound as per instructions. The closing corner is shown:
13.88 chains (916.08 feet) South of Mile Post 37
- 1901 Surveyor's Record Book B, obtained from the Yellow Medicine County Recorder's Office, contains John Norgaard's, County Surveyor, remonumentation notes for section corners in Yellow Medicine County. The following information is stated about corner on page 223:
A) located 5280 feet south of the northwest corner of Section 18 and on line of monuments for Dakota
B) set a 6 inch by 6 inch by 24 inch long jasper granite to mark corner
- 2000 May 15, DNR Bureau of Engineering traversed to the area of the corner and found a 6 inch by 6 inch cut granite stone up 0.3 of a foot. The cut granite stone was found to be:
A) in line with the westerly projection of the center line of a Township Road east
B) in line with a fence about 300 feet north
C) 917.58 feet from Mile Post Number 37
D) 5288.03 feet from a cut granite stone at the closing corner to the northwest corner of Section 18
E) 9.06 feet west of a straight line from Mile Post Number 37 to Mile Post Number 38

Analysis of the above information led the DNR Bureau of Engineering to conclude that the found 6 inch by 6 inch cut granite stone marks the location of the closing corner, so computed the position for the northwest corner of Section 18 at the intersection of the following lines:

on line between Mile Post Number 37 and Mile Post Number 38

on line between the northeast corner of Section 19 and the cut granite stone at the closing corner

A monument was NOT set to mark the location of the northwest corner of Section 18.