

# CERTIFICATE OF LOCATION OF GOVERNMENT CORNER

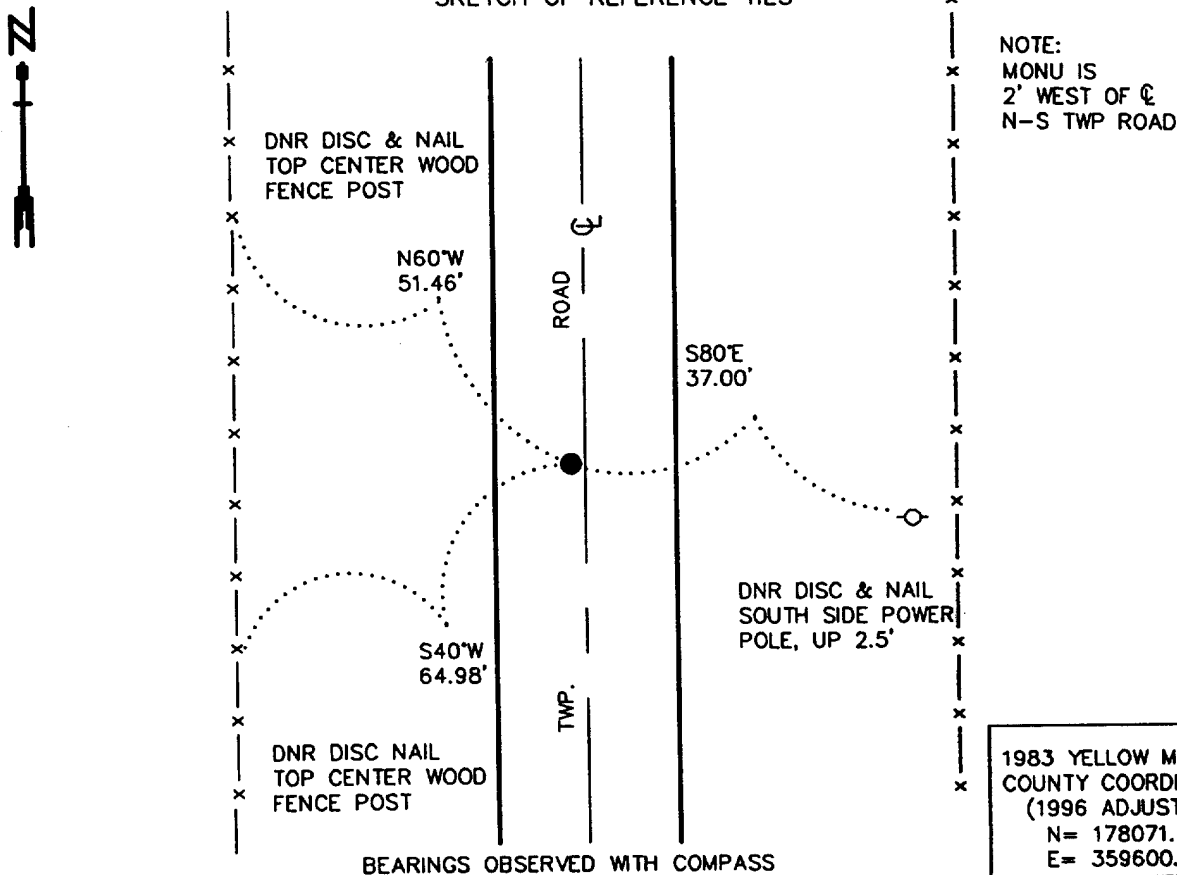
EAST QUARTER Corner of Section 19, Township 115 N., Range 46 W., 5th P.M.

STATE OF MINNESOTA, County of YELLOW MEDICINE

At the corner location shown on the sketch:

- On \_\_\_\_\_ found a \_\_\_\_\_  
DATE
- left monument as found,  lowered monument,  removed monument (explain)
- On 5/17/2000 Placed a 3/4" x 24" REBAR WITH ALUMINUM CAP STAMPED  
DATE  
"DNR SURVEY MARKER", DOWN 0.4'

### SKETCH OF REFERENCE TIES



Statement of evidence relative to this corner location is on back of page.

6/12/2000  
SNA02026

I hereby certify that this document and the data contained herein was prepared by me or under my direct supervision

Bruce W. Sheppard 10/30/00  
SIGNATURE DATE

- License Number 17003
- Land Surveyor,  Professional Engineer
  - County Surveyor,  County Engineer

OFFICE OF THE COUNTY RECORDER  
County of Yellow Medicine

I hereby certify that this document was filed in the Co. Recorders Office at 9:10 A.M. on the NOV. 2 - 2000 day of NOV. 2 - 2000 A.D., 20

County Recorder Kap Nordahl  
By \_\_\_\_\_, Deputy  
DOCUMENT NO. 224270

East Quarter Corner of Section 19, Township 115 North, Range 46 West

The Minnesota DNR Bureau of Engineering contacted the following for survey information:  
Minnesota Secretary of State's Office  
Yellow Medicine County Recorder's Office  
Yellow Medicine County Highway Engineer's Office

1871 U. S. General Land Office notes, obtained from the Secretary of State's Office, show the corner marked with a wood post in a raised mound as per instructions.

No resurvey information was obtained for this corner.

2000 May 17, DNR Bureau of Engineering traversed to the area of corner and found its location to be on a north-south Township Road. No evidence of east or west lines of occupation exist in area of corner, so computed the lost position for corner and found it to be:  
2650.16 feet from adjoining section corners  
2 feet west of the center line of the north-south Township Road  
Conducted a field search at the computed lost position for corner by scanning the area with an electronic metal detector but no metal attraction was obtained. Did not excavate area of corner in search of a monument because no records of a monument being set at corner since the GLO survey was found.

Analysis of the above information led the DNR Bureau of Engineering to conclude that the lost position marks the location of the corner. Set a 3/4 inch by 24 inch rebar with an aluminum cap stamped "DNR SURVEY MARKER" at the computed lost position for corner.