

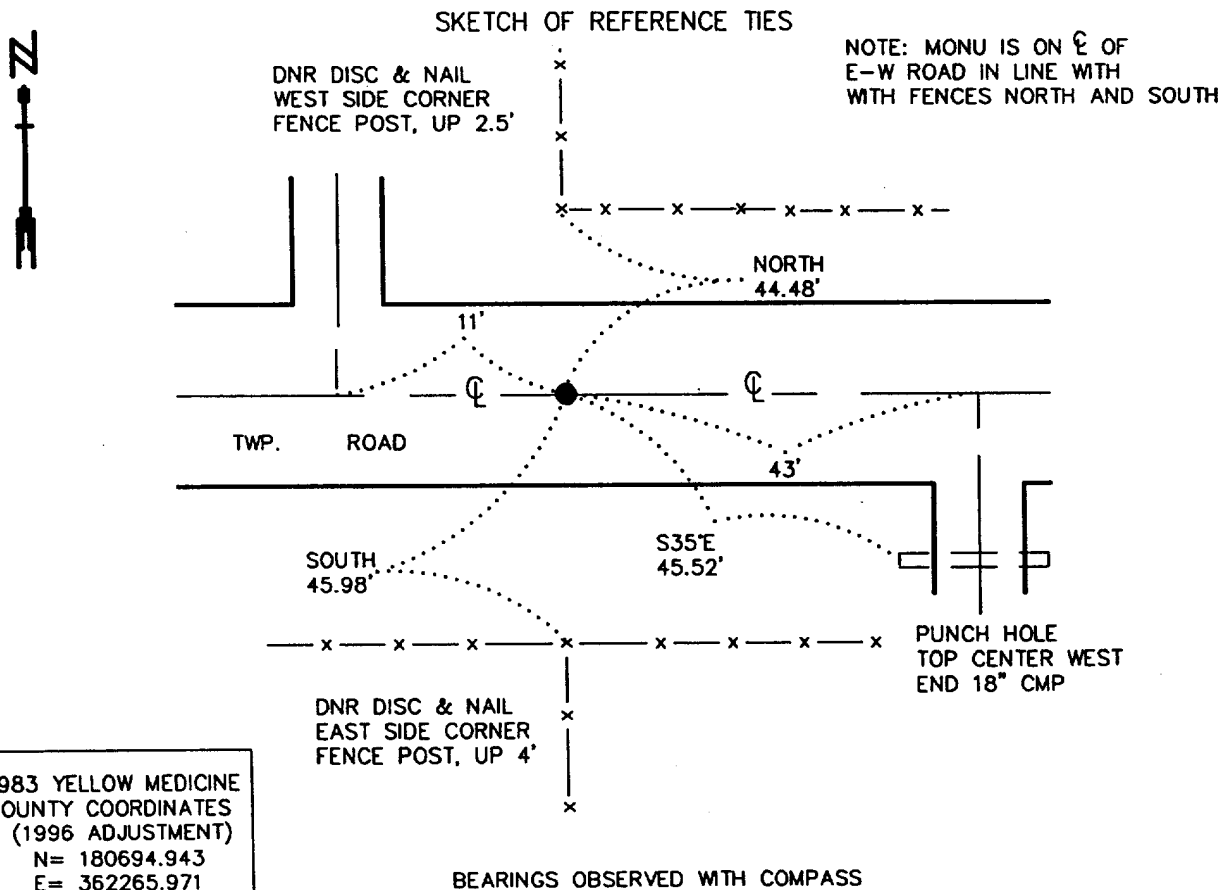
CERTIFICATE OF LOCATION OF GOVERNMENT CORNER

NORTH QUARTER Corner of Section 20, Township 115 N., Range 46 W., 5th P.M.

STATE OF MINNESOTA, County of YELLOW MEDICINE

At the corner location shown on the sketch:

- On _____ found a _____
DATE
- left monument as found, lowered monument, removed monument (explain)
- On 5/17/200 Placed a 3/4" x 24" REBAR WITH ALUMINUM CAP STAMPED
DATE "DNR SURVEY MARKER", DOWN 0.3'



1983 YELLOW MEDICINE
COUNTY COORDINATES
(1996 ADJUSTMENT)
N= 180694.943
E= 362265.971

Statement of evidence relative to this corner location is on back of page. 6/12/200
SNA02026

I hereby certify that this document and the data contained herein was prepared by me or under my direct supervision.

Bruce W. Sheppard 10/30/00
SIGNATURE DATE

License Number 17003

Land Surveyor, Professional Engineer
 County Surveyor, County Engineer

OFFICE OF THE COUNTY RECORDER
County of Yellow Medicine

I hereby certify that this document was filed in the Co. Recorders Office at 9:20 A.M. on the NOV. 2 - 2000 day of NOV. 2 - 2000 A.D., 2000

County Recorder Kay Nordahl
By _____, Deputy
DOCUMENT NO. 224272

North Quarter Corner of Section 20, Township 115 North, Range 46 West

The Minnesota DNR Bureau of Engineering contacted the following for survey information:

Minnesota Secretary of State's Office

Yellow Medicine County Recorder's Office

Yellow Medicine County Highway Engineer's Office

1871 U. S. General Land Office notes, obtained from the Secretary of State's Office, show the corner marked with a wood post in a raised mound as per instructions.

No resurvey information was obtained for this corner.

2000 May 17, DNR Bureau of Engineering traversed to the area of corner and found its location to be at the intersection of the center line of an east-west Township Road with fences north and south. Scanned the area of corner with an electronic metal detector but no metal attraction was obtained. Did not excavate area of corner in search of a monument because no records of a monument being set at corner since the GLO survey was found. Set a temporary point for corner at the intersection of the center line of road and fences and found it to be:
2644.71 feet from the northeast corner of Section 20
2651.21 feet from the northwest corner of Section 20
2.23 feet south and 3.23 feet east of the lost position

Analysis of the above information led the DNR Bureau of Engineering to conclude that the intersection of the center line of the east-west Township Road with fences north and south marks the obliterated location of the corner. Set a 3/4 inch by 24 inch rebar with an aluminum cap stamped "DNR SURVEY MARKER" at the obliterated position for corner.