

# CERTIFICATE OF LOCATION OF GOVERNMENT CORNER

NORTHEAST Corner of Section 30, Township 115 N., Range 46 W., 5th P.M.

STATE OF MINNESOTA, County of YELLOW MEDICINE

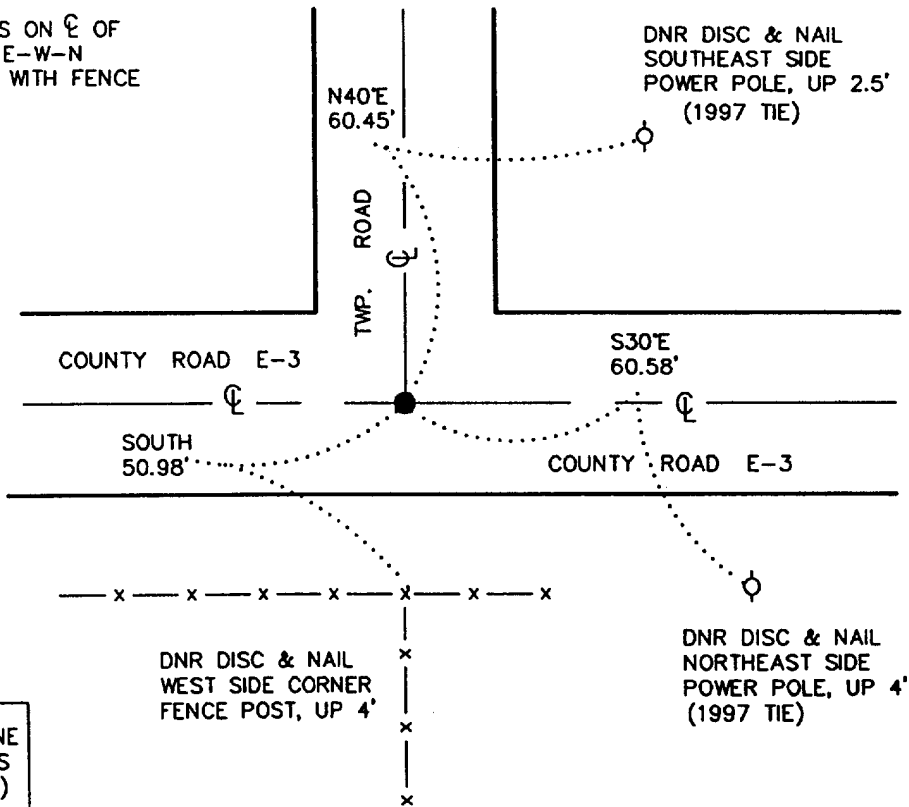
At the corner location shown on the sketch:

- On 5/15/2000 found a 12" LONG BRIDGE SPIKE, DOWN 2.0', OVER A  
DATE 12" x 6" x 6" FIELD STONE OVER A 6" x 6" CUT GRANITE STONE, DOWN 4.0'
- left monument as found,  lowered monument,  removed monument (explain)
- On 5/15/2000 Placed a 3/4" x 24" REBAR WITH ALUMINUM CAP STAMPED  
DATE "DNR SURVEY MARKER", DOWN 0.3', OVER STONE

SKETCH OF REFERENCE TIES



NOTE:  
MONU IS ON  $\text{C}$  OF  
ROADS E-W-N  
IN LINE WITH FENCE  
SOUTH



1983 YELLOW MEDICINE  
COUNTY COORDINATES  
(1996 ADJUSTMENT)  
N= 175421.578  
E= 359585.223

BEARINGS OBSERVED WITH COMPASS

Statement of evidence relative to this corner location is on back of page.

6/12/2000  
SNA02026

I hereby certify that this document and the data contained herein was prepared by me or under

my direct supervision.  
Russ W. Shepperd 10/30/00  
SIGNATURE DATE

License Number 17003

- Land Surveyor,  Professional Engineer
- County Surveyor,  County Engineer

OFFICE OF THE COUNTY RECORDER  
County of Yellow Medicine

I hereby certify that this document was filed in the Co. Recorders Office at 9:25 A.M. on the NOV. 2 day of 2000 A.D., 20\_\_

County Recorder Kay Nordahl  
By \_\_\_\_\_, Deputy

DOCUMENT NO. 224273

Northeast Corner of Section 30, Township 115 North, Range 46 West

The Minnesota DNR Bureau of Engineering contacted the following for survey information:  
Minnesota Secretary of State's Office  
Yellow Medicine County Recorder's Office  
Yellow Medicine County Highway Engineer's Office

- 1871 U. S. General Land Office notes, obtained from the Secretary of State's Office, show the corner marked with a wood post in a raised mound as per instructions.
- 1901 Surveyor's Record Book B, obtained from the County Recorder's Office, contains John Norgaard's, County Surveyor, remonumentation notes for section corners in Yellow Medicine County. The following information is stated about corner on page 131:  
found stake in the government mound  
set a 6 inch by 6 inch by 24 inch long jasper granite level with the ground to mark corner
- 1903 October 29, page 181 of a Surveyor's Record Book, obtained from the County Recorder's Office, contains a survey by John Norgaard, County Surveyor. Survey shows a jasper monument at corner but does not indicate if it was found or set.
- No Section Corner Tie Book, obtained from the County Highway Engineer's Office, does not  
Date indicate what kind of monument was found or set at corner but the following ties are shown to it:  
second fence post, northeast, 70.8 feet  
third fence post, northwest, 91.8 feet  
third fence post, south, 61.2 feet
- 1997 July 16, a page in a field notebook for County Road E-3, obtained from the County Highway Engineer's Office, shows that a stone with a field stone on top were found down 3 foot at corner. The following ties are shown to corner:  
at Station 39+37.09  
power pole, southeast, 60.5 feet  
power pole, northeast, 60.6 feet
- 2000 May 15, DNR Bureau of Engineering hired a backhoe to dig for evidence of the corner. A 12 inch long bridge spike was found down 2 feet over a 12 inch by 6 inch by 6 inch field stone down 3.5 feet over a 6 inch by 6 inch cut granite stone down 4 feet. Searched for and found record ties as shown on the sketch of reference ties. Set a 3/4 inch by 24 inch rebar with aluminum cap stamped "DNR SURVEY MAKER" over the cut granite stone and found it to be:  
at the intersection of the center lines of roads east, west and north  
in line with a fence south

Analysis of the above information led the DNR Bureau of Engineering to conclude that the found 6 inch by 6 inch cut granite stone marks the original location of the corner.