

# CERTIFICATE OF LOCATION OF GOVERNMENT CORNER

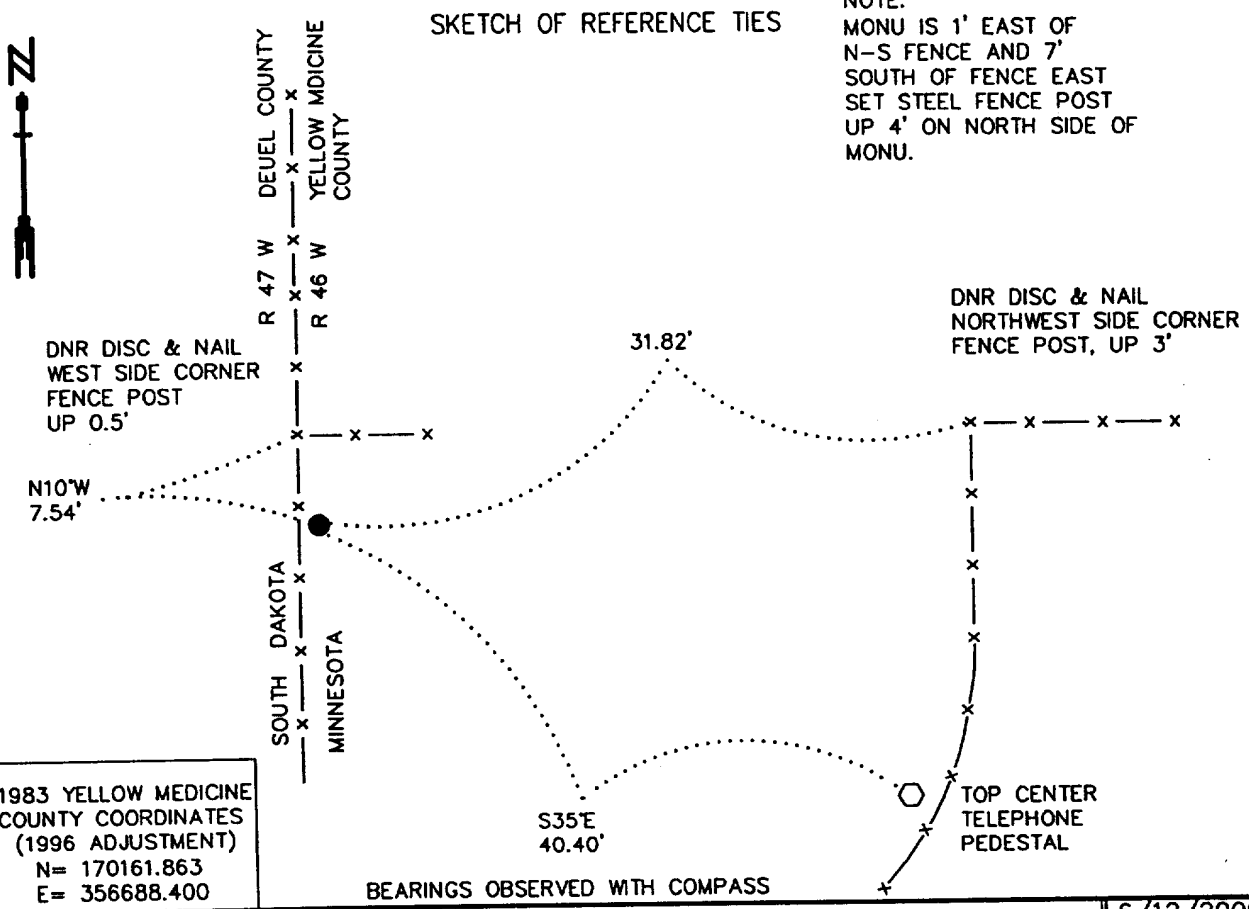
**CLOSING CORNER  
TO NORTHWEST**

Corner of Section 31, Township 115 N., Range 46 W., 5th P.M.

STATE OF MINNESOTA, County of YELLOW MEDICINE

At the corner location shown on the sketch:

- On 5/10/2000 found a 6" x 6" CUT GRANITE STONE, FLUSH  
DATE
- left monument as found,     lowered monument,     removed monument (explain)
- On \_\_\_\_\_ Placed a \_\_\_\_\_  
DATE



NOTE:  
MONU IS 1' EAST OF  
N-S FENCE AND 7'  
SOUTH OF FENCE EAST  
SET STEEL FENCE POST  
UP 4' ON NORTH SIDE OF  
MONU.

1983 YELLOW MEDICINE  
COUNTY COORDINATES  
(1996 ADJUSTMENT)  
N= 170161.863  
E= 356688.400

BEARINGS OBSERVED WITH COMPASS

Statement of evidence relative to this corner location is on back of page.

6/12/2000  
SNA02026

I hereby certify that this document and the data contained herein was prepared by me or under my direct supervision.

Bruce W. Shuped 10/30/00  
SIGNATURE DATE

License Number 17003

- Land Surveyor,     Professional Engineer
- County Surveyor,     County Engineer

OFFICE OF THE COUNTY RECORDER  
County of Yellow Medicine

I hereby certify that this document was filed in the Co. Recorders Office at 9:35 A.M. on the \_\_\_\_\_ day of NOV. 2 - 2000 A.D., 20\_\_

County Recorder Kay Nordahl, Deputy  
By \_\_\_\_\_

DOCUMENT NO. 224275

Northwest Corner of Section 31, Township 115 North, Range 46 West

The Minnesota DNR Bureau of Engineering contacted the following for survey information:

Minnesota Secretary of State's Office  
Yellow Medicine County Recorder's Office  
Yellow Medicine County Highway Engineer's Office  
South Dakota Historical Society's Office in Pierre  
Deuel County Register of Deed's Office

- 1871 U. S. General Land Office notes, obtained from the Minnesota Secretary of State's Office, show that a closing corner was established on the western boundary of the state. The closing corner was marked with a wood post in a raised mound as per instructions. The closing corner is shown:  
13.90 chains (917.40 feet) South of Mile Post 39
- 1901 Surveyor's Record Book B, obtained from the Yellow Medicine County Recorder's Office, contains John Norgaard's, County Surveyor, remonumentation notes for section corners in Yellow Medicine County. The following information is stated about corner on page 223:  
A) located due west of the northeast corner of Section 31 and on line with Mile Post Number 39 and monument for Dakota  
B) set a 6 inch by 6 inch by 24 inch long jasper granite to mark corner
- 2000 May 10, DNR Bureau of Engineering traversed to the area of the corner and found a 6 inch by 6 inch cut granite stone flush with the ground. The cut granite stone was found to be:  
2.88 feet east of a straight line from Mile Post Number 39 to the Witness Corner to Mile Post Number 40

Analysis of the above information led the DNR Bureau of Engineering to conclude that the found 6 inch by 6 inch cut granite stone marks the location of the closing corner to the northwest corner of Section 31. A position for the northwest corner of Section 31 was NOT established.