

# CERTIFICATE OF LOCATION OF GOVERNMENT CORNER

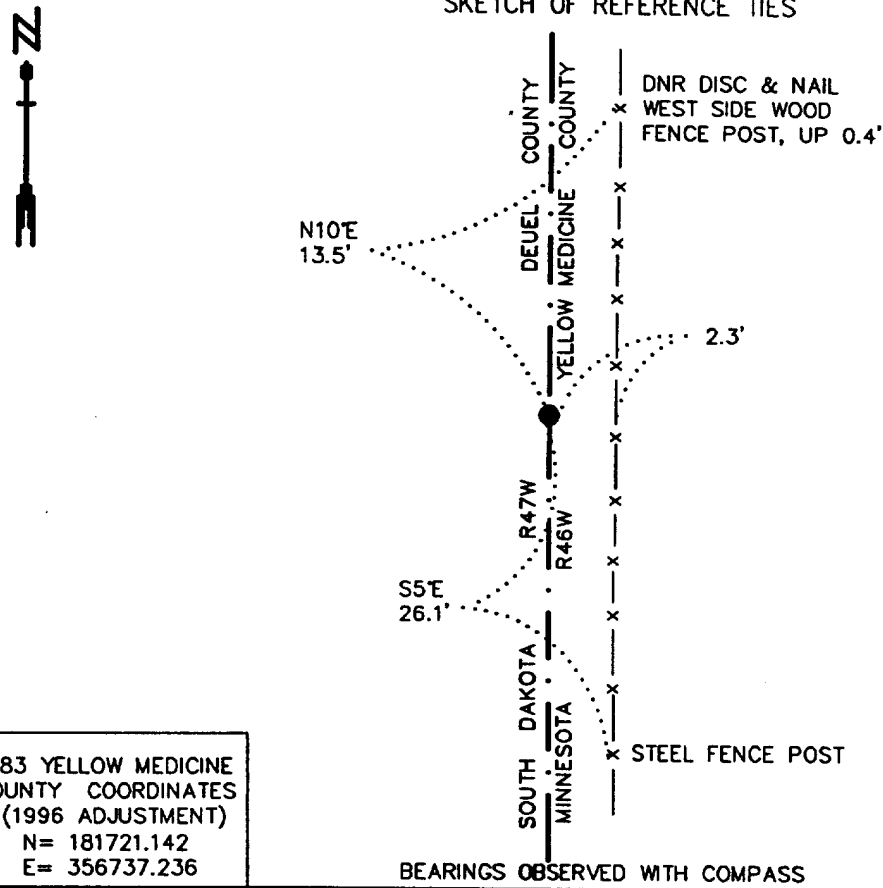
Mile Post #37 Corner of Section 18, Township 115 N., Range 46 W., 5th P.M.

STATE OF MINNESOTA, County of YELLOW MEDICINE

At the corner location shown on the sketch:

- On 5/10/2000 found a 6" x 6" CUT GRANITE STONE, FLUSH  
DATE
- left monument as found,       lowered monument,       removed monument (explain)
- On \_\_\_\_\_ Placed a \_\_\_\_\_  
DATE

### SKETCH OF REFERENCE TIES



1983 YELLOW MEDICINE  
COUNTY COORDINATES  
(1996 ADJUSTMENT)  
N= 181721.142  
E= 356737.236

Statement of evidence relative to this corner location is on back of page. 6/12/2000  
SNA02026

I hereby certify that this document and the data contained herein was prepared by me or under my direct supervision  
Bruce W. Stepped 10/30/00  
 SIGNATURE DATE  
 License Number 17003  
 Land Surveyor,       Professional Engineer  
 County Surveyor,       County Engineer

OFFICE OF THE COUNTY RECORDER  
 County of Yellow Medicine  
 I hereby certify that this document was filed in the Co. Recorders Office at 9:40 A.M. on the \_\_\_\_\_ day of NOV. 2 - 2000 A.D., 20\_\_\_\_  
 County Recorder Kay Nordahl  
 By \_\_\_\_\_, Deputy  
 DOCUMENT NO. 224276

Mile Post Number 37 of Section 18, Township 115 North, Range 46 West

The Minnesota DNR Bureau of Engineering contacted the following for survey information:

Minnesota Secretary of State's Office  
Yellow Medicine County Recorder's Office  
Yellow Medicine County Highway Engineer's Office  
South Dakota Historical Society's Office in Pierre  
Deuel County Register of Deed's Office

1859 U. S. General Land Office notes, obtained from the South Dakota Historical Society's Office, show the corner marked with a six inch square by eight foot long wood post in a 3 ½ foot high by 5 ½ inch diameter mound with trenches 18 inches east and west. The following was marked on the wood post:

"Minnesota" on the east  
"Dakota" on the west  
"1859" on the south  
"37M" on the north

1902 September, pages 48 and 49 of a Surveyor's Field Book, obtained from the Deuel County Register of Deed's Office, contain field notes of G.W. Carpenter's (County and Deputy State Surveyor) resurvey of all the mile posts abutting Deuel County between the states of South Dakota and Minnesota and all of the section and quarter section corners abutting and pertaining to Deuel County. The field notes state that a stone in a mound with 2 pits were found at corner. The stone was replaced with a 6 inch by 6 inch by 30 inch granite stone which was set firmly in the ground.

2000 May 10, DNR Bureau of Engineering traversed to the area of the corner and found a 6 inch by 6 inch cut granite stone flush with the ground. The cut granite stone was found to be:  
2.3 feet west of a north-south fence  
5283.96 feet from Mile Post Number 36

Analysis of the above information led the DNR Bureau of Engineering to conclude that the found 6 inch by 6 inch cut granite stone marks the original location of the corner.