

CERTIFICATE OF LOCATION OF GOVERNMENT CORNER

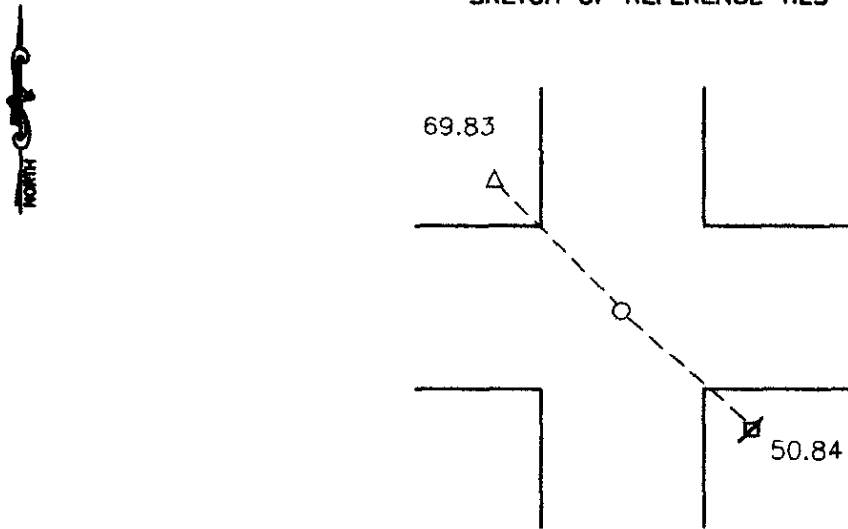
Northeast Corner of Section 27, Township 113, Range 39, 5th P.M.

STATE OF MINNESOTA, County of Yellow Medicine

At the corner location shown on the sketch:

- On 9-27-2000 found a 1x8 inch iron pipe filled with concrete with wooden stake
DATE
along the South side, we removed it and dug deeper but did not find a stone
 left monument as found, lowered monument, removed monument (explain)
- On 9-27-2000 placed a 10" 5/8" rerod in the center of the pipe
DATE

SKETCH OF REFERENCE TIES



Nail and seal in top of cut off telephone post 69.87' Northwest

Nail and seal in power pole 50.84' Southeast

Statement of evidence relative to this corner location is on back of page.

I hereby certify that this document and the data contained herein was prepared by me or under my direct supervision.

Lyle C Moseng 12-13-00
SIGNATURE DATE

Registration No. 11943

- Land Surveyor, Professional Engineer
- County Surveyor, County Engineer

OFFICE OF THE COUNTY RECORDER

County of

I hereby certify that this document was filed in the Co. Recorders office at 10:35 A.M on the 21st day of December A.D. 2000

County Recorder Kay Nerdahl

By Daie Rohlik, Deputy

DOCUMENT NO. 224804

N/C Lyle Moseng, 703 - Lawrence St.
Mshll. 56258

Statement of Evidence

On 9-27-2000, Moseng Land Surveying found a 1x8" iron pipe filled with concrete with a wooden stake along the South side it was removed so we could dig deeper but there was no stone. We set a 10" long 5/8" rerod in the center of it.