

# CERTIFICATE OF LOCATION OF GOVERNMENT CORNER

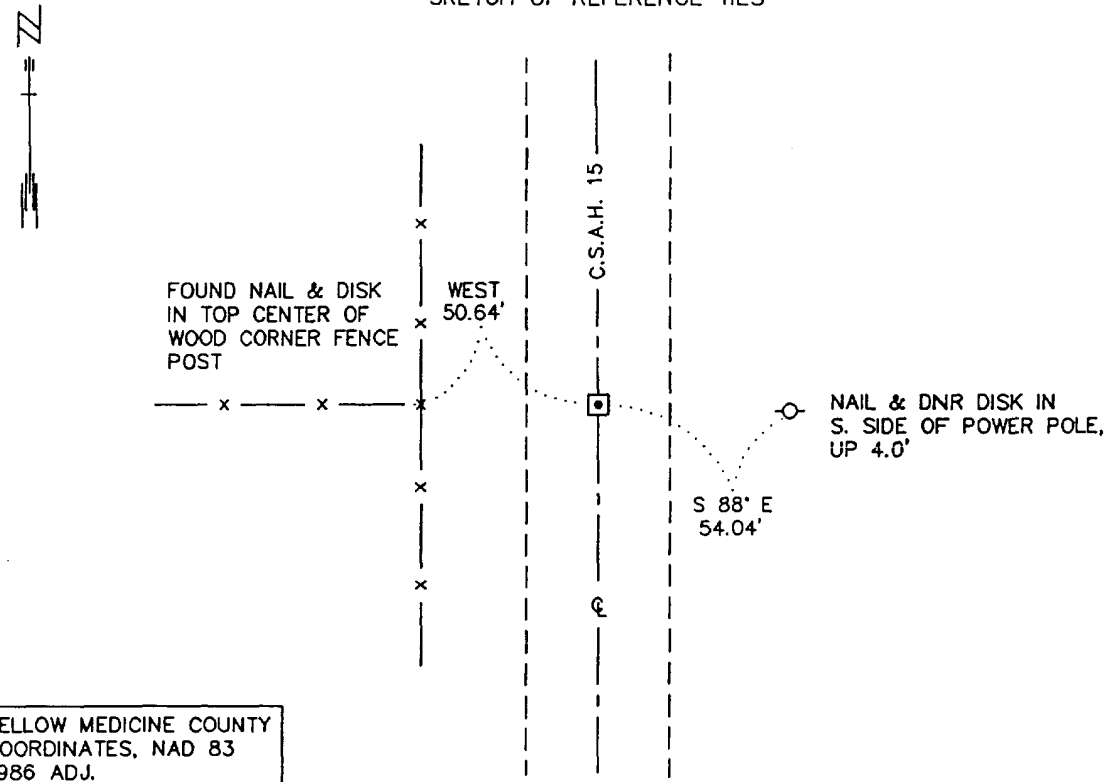
EAST QUARTER Corner of Section 32, Township 114 N., Range 46 W., 5th P.M.

STATE OF MINNESOTA, County of YELLOW MEDICINE

At the corner location shown on the sketch:

- On \_\_\_\_\_ found a \_\_\_\_\_  
DATE
- left monument as found,  lowered monument,  removed monument (explain)
- On 10/10/2000 Placed a 3/4" X 12" REBAR WITH ALUMINUM CAP STAMPED  
DATE  
"DNR SURVEY MARKER", FLUSH.

### SKETCH OF REFERENCE TIES



YELLOW MEDICINE COUNTY  
 COORDINATES, NAD 83  
 1986 ADJ.  
 N = 135689.534  
 E = 364800.059

BEARINGS OBSERVED WITH COMPASS

Statement of evidence relative to this corner location is on back of page.

2/21/01  
WMA00190.00.00.01

I hereby certify that this document and the data contained herein was prepared by me or under my direct supervision.

Russ W. Stepped 6/4/01  
SIGNATURE DATE

License Number 17003

Land Surveyor,  Professional Engineer  
 County Surveyor,  County Engineer

OFFICE OF THE COUNTY RECORDER  
 County of Yellow Medicine

I hereby certify that this document was filed in the Co. Recorder's Office at 9:40 A.M. on the 13 day of June A.D., 2001

County Recorder Kay Nerdahl  
 By Laie Roblik Deputy  
 DOCUMENT NO. 226144

East Quarter Corner of Section 32, Township 114 North, Range 46 West

The DNR Bureau of Engineering contacted the following for survey information:

Minnesota Secretary of State's Office  
Yellow Medicine County Recorder's Office  
Yellow Medicine County Highway Engineer's Office

- 1871 U. S. General Land Office notes obtained from the Secretary of State's Office show the corner marked with a wood post in a raised mound as per instructions.
- 1910 May, Surveyor's Record Book, page 214, obtained from the County Recorder's Office, contains a survey by John Norgaard, County Surveyor. Survey shows corner but does not indicate what kind of monument was found or set. Norgaard states:  
"located in center of road running north and south and on fence line running east, said point was proved to be where the government corner used to be some years ago"  
The corner is shown:  
2619 feet from the southeast corner of Section 32
- 1913 A page in a Surveyor's Record Book, obtained from the County Recorder's Office, contains a survey by John Norgaard, County Surveyor. Norgaard states:  
"found stone set by me 2 years ago in center of road running north and south and fence lines running east and west, said point was proved to be where the government corner used to be by adjoining landowners several years ago"  
The corner is shown:  
2619 feet from the southeast corner of Section 32
- 2000 October 10, DNR Bureau of Engineering traversed to the area of corner and found its location to be at the intersection of the center line of north-south County State Aid Highway Number 15 with a fence west. Scanned the area of corner with an electronic metal detector but no metal attraction was obtained. Did not excavate area of corner in search of a monument because of the following:  
A) Norgaard's resurveys do not indicate what kind of monument was found or set at corner  
B) County State Aid Highway Number 15 is bituminous surfaced  
C) area of corner is in a fill section of about 4.5 feet

Set a 3/4 inch by 12 inch rebar with an aluminum cap stamped "DNR SURVEY MARKER" at the intersection of the center line of north-south County State Aid Highway Number 15 with a fence west and found it to be:

in line with a fence about 1000 feet east  
2628.73 feet from the southeast corner of Section 32  
2636.80 feet from the northeast corner of Section 32  
4.33 feet south and 31.57 feet west of the lost position

Analysis of the above information led the DNR Bureau of Engineering to conclude that the 3/4 inch by 12 inch rebar with an aluminum cap stamped "MN DNR SURVEY MARKER", set at the intersection of the center line of north-south County State Aid Highway Number 15 with a fence west, marks the obliterated location of the corner.