

CERTIFICATE OF LOCATION OF GOVERNMENT CORNER

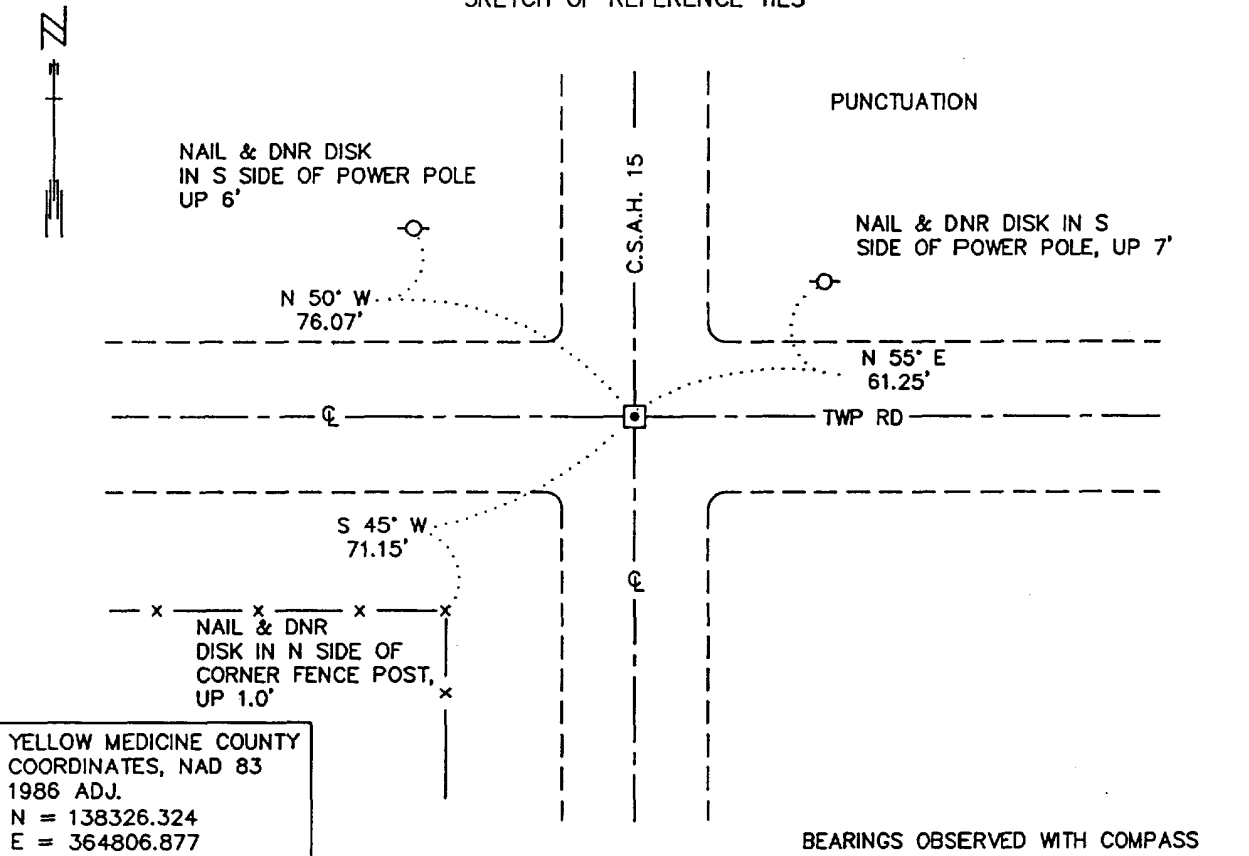
NORTHEAST Corner of Section 32, Township 114 N., Range 46 W, 5th P.M.

STATE OF MINNESOTA, County of YELLOW MEDICINE

At the corner location shown on the sketch:

- On _____ found a _____
DATE
- left monument as found, lowered monument, removed monument (explain)
- On 10/10/2000 Placed a 3/4" X 12" REBAR WITH ALUMINUM CAP STAMPED
DATE "DNR SURVEY MARKER", FLUSH.

SKETCH OF REFERENCE TIES



Statement of evidence relative to this corner location is on back of page. 2/21/2001
WMA00190.00.00.01

I hereby certify that this document and the data contained herein was prepared by me or under my direct supervision.

Bruce W. Stepp 6/4/01
SIGNATURE DATE

License Number 17003

Land Surveyor, Professional Engineer
 County Surveyor, County Engineer

OFFICE OF THE COUNTY RECORDER
County of Yellow Medicine

I hereby certify that this document was filed in the Co. Recorder's Office at 9:45 A.M. on the 13 day of June A.D., 2001

County Recorder Kay Nerdahl
By *Steve Rohlik* Deputy
DOCUMENT NO. 226145

Northeast Corner of Section 32, Township 114 North, Range 46 West

The DNR Bureau of Engineering contacted the following for survey information:

Minnesota Secretary of State's Office
Yellow Medicine County Recorder's Office
Yellow Medicine County Highway Engineer's Office

- 1871 U. S. General Land Office notes obtained from the Secretary of State's Office show the corner marked with a wood post in a raised mound as per instructions.
- 1901 Surveyor's Record Book B contains John Norgaard's, County Surveyor, remonumentation notes for section corners in Yellow Medicine County. The following information is stated about corner on page 204:
found the government mound
set a 6 inch by 6 inch by 24 inch long jasper granite level with the ground to mark corner
- 1910 May, Surveyor's Record Book, page 214, obtained from the County Recorder's Office, contains a survey by John Norgaard, County Surveyor. Survey shows corner but does not indicate what kind of monument was found or set.
- 1913 A page in a Surveyor's Record Book, obtained from the County Recorder's Office, contains a survey by John Norgaard, County Surveyor. Survey shows that a jasper stone monument was found at corner. The corner is shown:
2644 feet from the north quarter corner of Section 33
5288 feet from the northeast corner of Section 33
- 1955 Section Corner Tie Book, page 4, obtained from the County Highway Engineer's Office, does not indicate what kind of monument was found or set at corner but the following ties are shown to an assumed location for corner:
telephone pole, southwest, 60.2 feet
second fence post, northwest, 65.7 feet
power pole, northeast, 60.3 feet
- No Date Section Corner Tie Book, page 4, obtained from the County Highway Engineer's Office, does not indicate what kind of monument was found or set at corner but the following ties are shown to it:
corner fence post, northeast, 43.0 feet
corner fence post, southeast, 43.9 feet
- 1959 February 24, Section Corner Tie Book, page 4, obtained from the County Highway Engineer's Office, does not indicate what kind of monument was found or set at corner but the following ties are shown to an assumed location for corner:
power pole, northwest, 69.9 feet
power pole, northeast, 60.7 feet
telephone pole, southwest, 70.5 feet
- 2000 October 10, DNR Bureau of Engineering traversed to the area of corner and found its location to be at the intersection of the center line of north-south County State Aid Highway Number 15 and the center line of an east-west Township Road. Scanned the area of corner with an electronic metal detector but no metal attraction was obtained. Also, searched for but found no evidence of the record ties. Did not excavate area of corner in search of the record granite monument because of the following:
A) County State Aid Highway Number 15 is bituminous surfaced
B) area of corner is in a fill section of about 5 feet
- Set a 3/4 inch by 12 inch rebar with an aluminum cap stamped "DNR SURVEY MARKER" at the intersection of the center line of north-south County State Aid Highway Number 15 and the center line of an east-west Township Road and found it to be:
2648.94 feet from the north quarter corner of Section 33
5300.60 feet from the northeast corner of Section 33

Analysis of the above information led the DNR Bureau of Engineering to conclude that the 3/4 inch by 12 inch rebar with an aluminum cap stamped "MN DNR SURVEY MARKER", set at the intersection of the center line of north-south County State Aid Highway Number 15 and the center line of an east-west Township Road, marks the obliterated location of the corner.