

CERTIFICATE OF LOCATION OF GOVERNMENT CORNER

NORTHEAST Corner of Section 33, Township 114 N., Range 46 W., 5th P.M.

STATE OF MINNESOTA, County of YELLOW MEDICINE

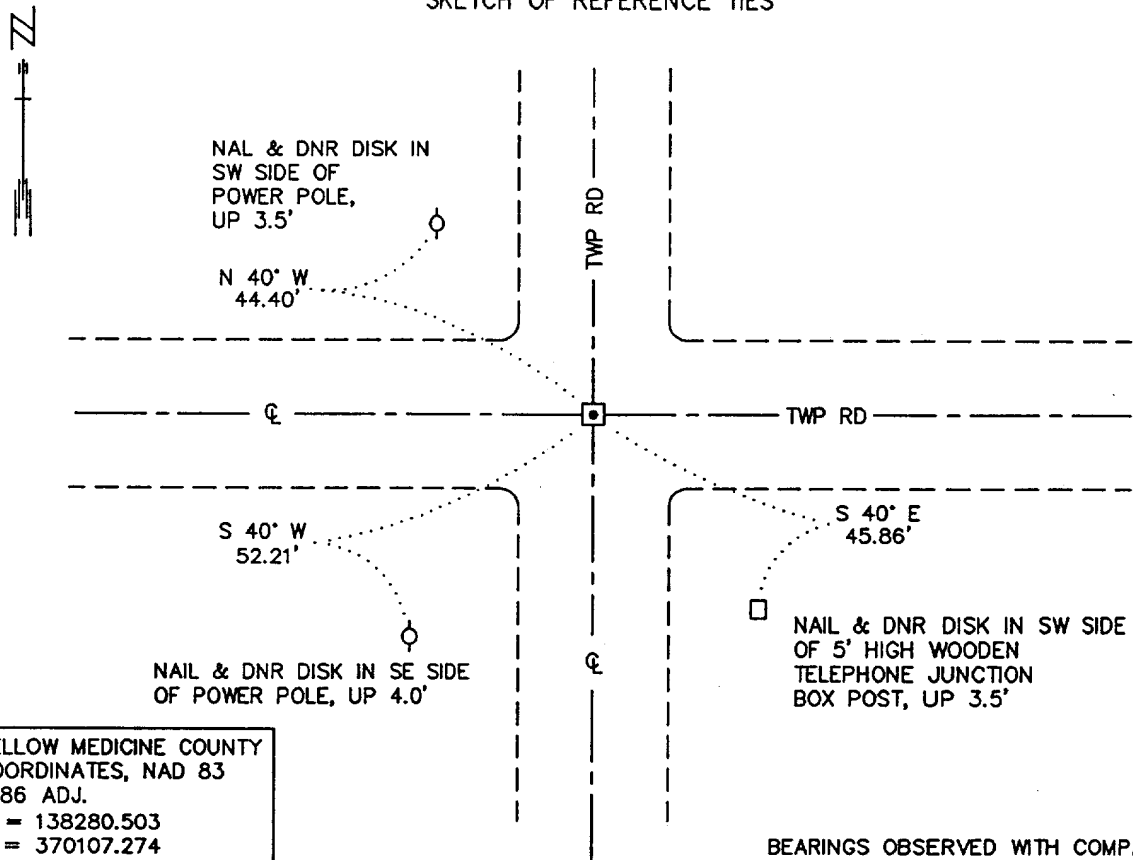
At the corner location shown on the sketch:

■ On 10/10/2000 found a 6" X 6" X 24" CUT GRANITE STONE, DOWN 1.5'
DATE

■ left monument as found, □ lowered monument, □ removed monument (explain)

■ On 10/10/2000 Placed a 3/4" X 12" REBAR WITH ALUMINUM CAP STAMPED
DATE "DNR SURVEY MARKER", DOWN 0.4', OVER STONE.

SKETCH OF REFERENCE TIES



YELLOR MEDICINE COUNTY
COORDINATES, NAD 83
1986 ADJ.
N = 138280.503
E = 370107.274

Statement of evidence relative to this corner location is on back of page.

2/21/01
WMA00190.00.00.01

I hereby certify that this document and the data contained herein was prepared by me or under my direct supervision.

Duane W. Sheppard 6/4/01
SIGNATURE DATE

License Number 17003

- Land Surveyor, Professional Engineer
- County Surveyor, County Engineer

OFFICE OF THE COUNTY RECORDER
County of Yellow Medicine

I hereby certify that this document was filed in the Co. Recorder's Office at 10:00 A.M. on the 13 day of June A.D., 2001

County Recorder Kay Nerdahl
By Laine Roblik, Deputy

DOCUMENT NO. 226148

Northeast Corner of Section 33, Township 114 North, Range 46 West

The DNR Bureau of Engineering contacted the following for survey information:

Minnesota Secretary of State's Office
Yellow Medicine County Recorder's Office
Yellow Medicine County Highway Engineer's Office

- 1871 U. S. General Land Office notes obtained from the Secretary of State's Office show the corner marked with a wood post in a raised mound as per instructions.
- 1901 Surveyor's Record Book B contains John Norgaard's, County Surveyor, remonumentation notes for section corners in Yellow Medicine County. The following information is stated about corner on page 203:
found the government mound and pits
set a 6 inch by 6 inch by 24 inch long jasper granite level with the ground to mark corner
- 1909 May, Surveyor's Record Book, page 198, obtained from the County Recorder's Office, contains a survey by John Norgaard, County Surveyor. Survey shows that a stone monument was found at corner. The corner is shown:
2636 feet from the north quarter corner of Section 34
5272 feet from the northeast corner of Section 34
- 1913 A page in a Surveyor's Record Book, obtained from the County Recorder's Office, contains a survey by John Norgaard, County Surveyor. Norgaard states:
"I could not find the jasper stone monument, after I got home and looking up the notes of a survey as I made in Section 34 I see the corner should probably be 10 or 12 feet farther east - but as my survey of these sections are in the southwest quarter it would not be but a little different at the center of the section"
The corner is shown:
2644 feet from the north quarter corner of Section 33
5288 feet from the northwest corner of Section 33
2643 feet from the east quarter corner of Section 33
Survey does not specify if the above distances are from the jasper stone monument or a point 10 or 12 feet west of it.
- No Date A page in a Surveyor's Record Book, obtained from the County Recorder's Office, contains ties to section corners. A description of what kind of monument was found or set at corner is not given but the following ties at shown to it:
corner fence post, northeast, 43.0 feet
corner fence post, southeast, 43.9 feet
- 2000 October 10, DNR Bureau of Engineering hired a backhoe to dig for evidence of the corner. A 6 inch by 6 inch cut granite stone was found down 1.5 feet. Searched for but found no evidence of the record ties. Set a 3/4 inch by 12 inch rebar with aluminum cap stamped "DNR SURVEY MAKER" over the cut granite stone and found it to be:
at the intersection of the center lines of roads north, south, east and west
2651.66 feet from the north quarter corner of Section 33
5300.60 feet from the northwest corner of Section 33
2643.04 feet from the east quarter corner of Section 33

Analysis of the above information led the DNR Bureau of Engineering to conclude that the found 6 inch by 6 inch cut granite stone marks the original location of the corner.