

CERTIFICATE OF LOCATION OF GOVERNMENT CORNER

EAST QUARTER Corner of Section 34, Township 114 N., Range 46 W., 5th P.M.

STATE OF MINNESOTA, County of YELLOW MEDICINE

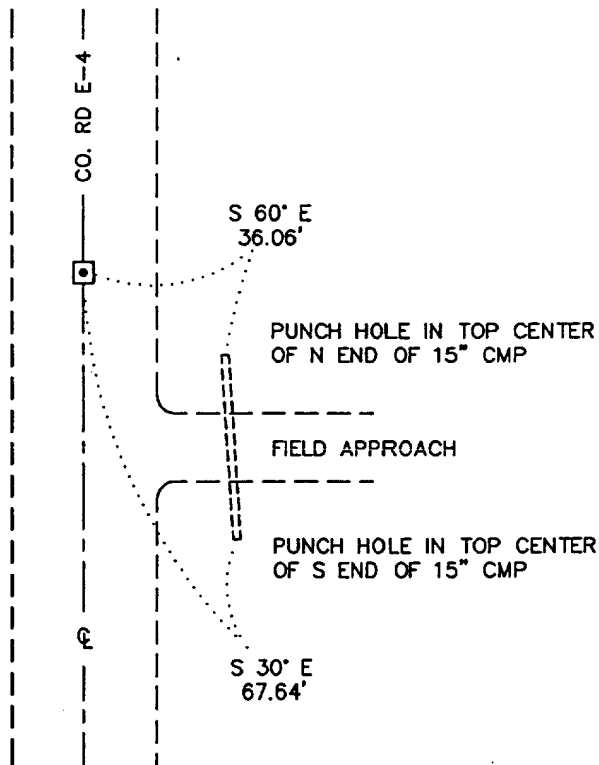
At the corner location shown on the sketch:

- On _____ found a _____
DATE
- left monument as found, lowered monument, removed monument (explain)
- On 10/10/2000 Placed a 3/4" X 12" REBAR WITH ALUMINUM CAP STAMPED
DATE "DNR SURVEY MARKER", DOWN 0.3'

SKETCH OF REFERENCE TIES



MON IS 38' N. OF
☉ OF FIELD APPROACH



YELLOW MEDICINE COUNTY
 COORDINATES, NAD 83
 1986 ADJ.
 N = 135581.586
 E = 375371.643

BEARINGS OBSERVED WITH COMPASS

Statement of evidence relative to this corner location is on back of page.

2/21/01
WMA00190.00.00.01

I hereby certify that this document and the data contained herein was prepared by me or under my direct supervision.

Russ W. Stepped 6/4/01
SIGNATURE DATE

License Number 17003

- Land Surveyor, Professional Engineer
- County Surveyor, County Engineer

OFFICE OF THE COUNTY RECORDER
County of Yellow Medicine

I hereby certify that this document was filed in the Co. Recorder's Office at 10:05 A.M. on the 13 day of June A.D., 2001

County Recorder Kay Nerdahl
By Neil Roblik, Deputy

DOCUMENT NO. 226149

East Quarter Corner of Section 34, Township 114 North, Range 46 West

The DNR Bureau of Engineering contacted the following for survey information:

Minnesota Secretary of State's Office
Yellow Medicine County Recorder's Office
Yellow Medicine County Highway Engineer's Office

- 1871 U. S. General Land Office notes obtained from the Secretary of State's Office show the corner marked with a wood post in a raised mound as per instructions.
- 1909 May, Surveyor's Record Book, page 198, obtained from the County Recorder's Office, contains a survey by John Norgaard, County Surveyor. Survey shows that corner was established midway and on line between adjoining section corners 2638 feet apart. A description of what kind of monument was set to mark the location of the corner is not given.
Survey shows that the east sixteenth corner of the southeast quarter was established midway and on line between the east quarter corner and the southeast corner of Section 34. A stone was set to mark the sixteenth corner and was found to be:
1319 feet from the east quarter corner of Section 34
1319 feet from the southeast corner of Section 34
- 2000 October 10, DNR Bureau of Engineering traversed to the area of corner and found its location to be in newly upgraded gravel surfaced north-south County Road E-4 with no lines of occupation east or west. Computed the lost position for corner and found it to be:
A) on the center line of County Road E-4
B) 2640.90 feet from adjoining section corners
C) 1318.8 feet from a point on the center line of County Road E-4 in line with a fence west in the area of the east sixteenth corner of the southeast quarter of Section 34

Conducted a field search at the computed lost position for corner by scanning the area with an electronic metal detector but no metal attraction was obtained. Did not excavate area of corner in search of a monument because Norgaard's resurvey does not indicate what kind of monument was found or set at corner. Area of corner is in a fill section of about 2 feet.

Did not excavate area of the east sixteenth corner of the southeast quarter of Section 34 for the stone set in 1909 by Norgaard. Area of corner is in a fill section of about 4 feet.

Analysis of the above information led the DNR Bureau of Engineering to conclude that the lost position marks the location of the corner. Set a 3/4 inch by 12 inch rebar with an aluminum cap stamped "DNR SURVEY MARKER" at the computed lost position for corner.