

CERTIFICATE OF LOCATION OF GOVERNMENT CORNER

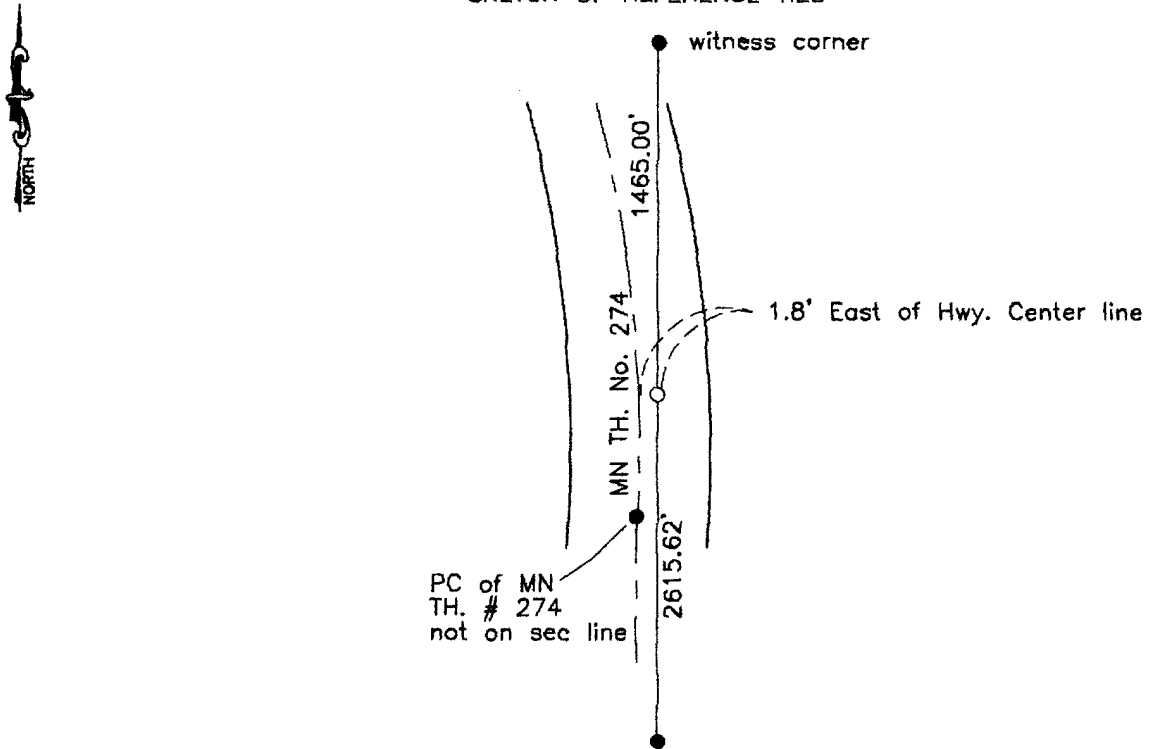
East Quarter _____ Corner of Section 21, Township 114, Range 39, 5th P.M.

STATE OF MINNESOTA, County of Yellow Medicine

At the corner location shown on the sketch:

- On _____ found a _____
- left monument as found, lowered monument, removed monument (explain)
- On June 20, 2001 placed a 5/8 inch iron stake with seal #11943

SKETCH OF REFERENCE TIES



Statement of evidence relative to this corner location is on back of page.

I hereby certify that this document and the data contained herein was prepared by me or under my direct supervision.

Steve C. Moring 7-17-01
SIGNATURE DATE

Registration No. 11943

- Land Surveyor, Professional Engineer
- County Surveyor, County Engineer

OFFICE OF THE COUNTY RECORDER
County of _____

I hereby certify that this document was filed in the Co. Recorders office at 10:15 A.M on the 13 day of August A.D. ~~X8~~ 2001

County Recorder Kay Nerdahl

By Arie Rohlik, Deputy

DOCUMENT NO. 226589

Statement of Evidence

In May of 1914, John Norguard recored corner as midway and on line. Nothing was recorded as set.

On June 20, 2001 Moseng Land Surveying set a 5/8" iron stake with seal #11943. The corner was set midway and on line using the notes from May 1914.