

CERTIFICATE OF LOCATION OF GOVERNMENT CORNER

North Quarter Corner of Section 22, Township 114, Range 39, 5th P.M.

STATE OF MINNESOTA, County of Yellow Medicine

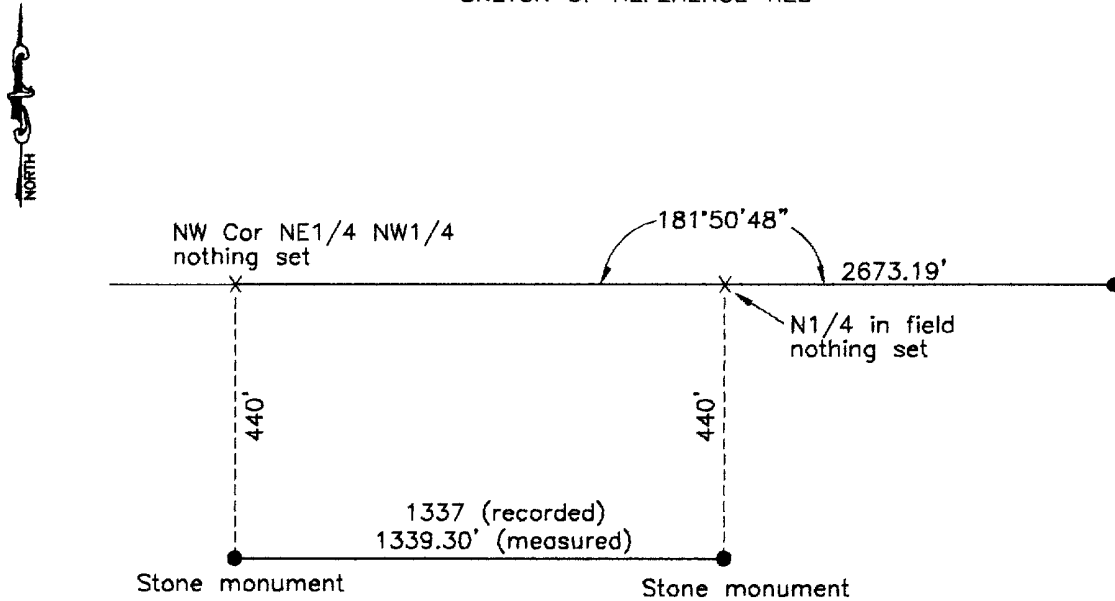
At the corner location shown on the sketch:

On June 19, 2001 found 2 pointed field stones
DATE

left monument as found, lowered monument, removed monument (explain)

On _____ placed a _____
DATE

SKETCH OF REFERENCE TIES



Statement of evidence relative to this corner location is on back of page.

I hereby certify that this document and the data contained herein was prepared by me or under my direct supervision.

Lyle C. Murray 7-16-01
SIGNATURE DATE

Registration No. 11943

Land Surveyor, Professional Engineer
 County Surveyor, County Engineer

OFFICE OF THE COUNTY RECORDER

County of _____

I hereby certify that this document was filed in the Co. Recorders office at 10:30 A.M on the 13 day of August A.D. ~~19~~ 2001

County Recorder Kay Nerdahl

By Shirley Rohlik, Deputy

DOCUMENT NO. 226592

Statement of Evidence

In May of 1914, John Norgaard, County Surveyor, set 2 pointed field stones. The first was set south of the North Quarter, 440 feet. The other was set 440 feet south of the North 1/16 line.

On June 19, 2001, Moseng Land Surveying found 2 pointed field stones using notes from 1914.