

CERTIFICATE OF LOCATION OF GOVERNMENT CORNER

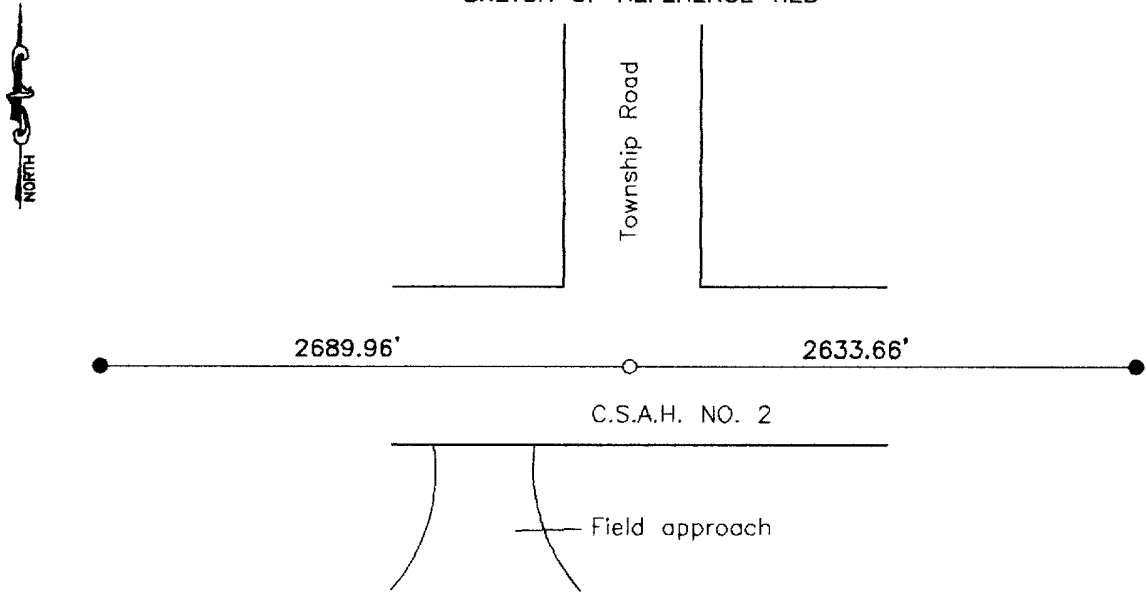
North Quarter Corner of Section 27, Township 114, Range 39, 5th P.M.

STATE OF MINNESOTA, County of Yellow Medicine

At the corner location shown on the sketch:

- On _____ found a _____
- DATE
- left monument as found, lowered monument, removed monument (explain)
- On June 20, 2001 placed a 5/8 inch iron stake with seal # 11943
- DATE

SKETCH OF REFERENCE TIES



Statement of evidence relative to this corner location is on back of page.

<p>I hereby certify that this document and the data contained herein was prepared by me or under my direct supervision.</p> <p style="text-align: center;"><i>Lyle C. Moring</i> <u>7-17-01</u></p> <p style="text-align: center;"><small>SIGNATURE</small> <small>DATE</small></p> <p>Registration No. <u>11943</u></p> <p><input checked="" type="checkbox"/> Land Surveyor, <input type="checkbox"/> Professional Engineer</p> <p><input type="checkbox"/> County Surveyor, <input type="checkbox"/> County Engineer</p>	<p style="text-align: center;">OFFICE OF THE COUNTY RECORDER</p> <p>County of _____</p> <p>I hereby certify that this document was filed in the Co. Recorders office at <u>10:35</u> A.M on the <u>13</u> day of <u>August</u> A.D. 19<u>2001</u></p> <p>County Recorder <u>Kay Nerdahl</u></p> <p>By <u>Abil Rohlik</u>, Deputy</p> <p>DOCUMENT NO. <u>226593</u></p>
---	---

Statement of Evidence

In November of 1891, Jonah Peleman, County Surveyor, set a stone 39.86 chains West of the Northeast Corner.

In May of 1914, John Norgaard, County Surveyor, noted the corner as being 2687 feet East of the Northwest corner.

On June 20, 2001 Moseng Land Surveying set a 5/8 inch rerod with seal # 11943 marking the North Quarter Corner of Section 27-114-39. The corner was established proportionately using the recorded distances from 1891 (North Line NE1/4) and 1914 (North Line NW1/4)