

CERTIFICATE OF LOCATION OF GOVERNMENT CORNER

North Quarter Corner of Section 30, Township 114, Range 45, 5th P.M.

STATE OF MINNESOTA, County of Yellow Medicine

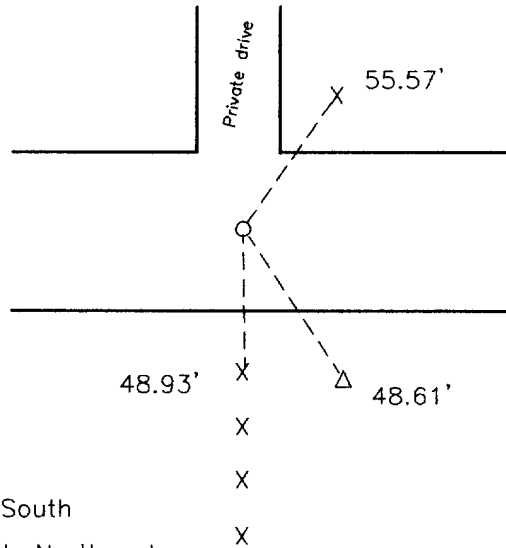
At the corner location shown on the sketch:

On 4-4-00 found a 4 spikes and part of a lath
DATE

left monument as found, lowered monument, removed monument (explain)

On 4-4-00 placed a 1" iron pipe with a seal #11943
DATE

SKETCH OF REFERENCE TIES



Nail and seal in top of end post 48.93' South
 Nail and seal in wooden post 55.57' North Northeast
 Top center of telephone pedestal 48.61' Southeast

Statement of evidence relative to this corner location is on back of page.

I hereby certify that this document and the data contained herein was prepared by me or under my direct supervision.

Syle E Meany 2-05-01
SIGNATURE DATE

Registration No. 11943

Land Surveyor, Professional Engineer
 County Surveyor, County Engineer

OFFICE OF THE COUNTY RECORDER
County of

I hereby certify that this document was filed in the Co. Recorders office at 10:40 A.M on the 13 day of August A.D. 2001

County Recorder Kay Nerdahl
By *Stuie BHLK*, Deputy

DOCUMENT NO. 226594

Statement of Evidence

On 4-4-00 Moseng Land Surveying set a 1" pipe with a seal #11943 after digging out 4 County nails and part of a lath. Proportionate would have put the corner 5.93' feet East of this P.I. Because the P.I. had been used and the fence to the south is on this line, I held to it rather than split. The corner is 10' south of line between section corners.