

CERTIFICATE OF LOCATION OF GOVERNMENT CORNER

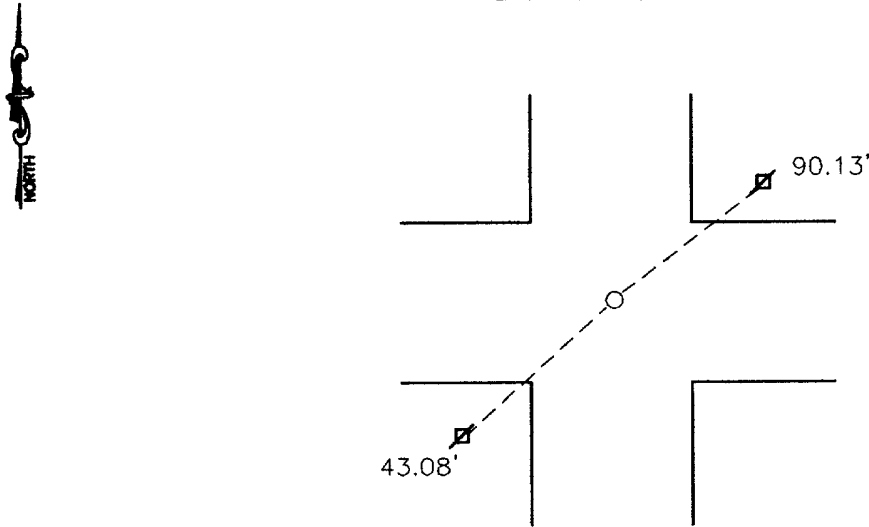
North East Corner of Section 36, Township 114, Range 39, 5th P.M.

STATE OF MINNESOTA, County of Yellow Medicine

At the corner location shown on the sketch:

- On 10-10-2000 found a 8x8 inch square cut granite stone
DATE
- left monument as found, lowered monument, removed monument (explain)
- On 10-10-2000 placed a 1"x 20" iron pipe w/seal on top at road surface
DATE

SKETCH OF REFERENCE TIES



Nail and bottle cap in power pole 43.08' Southwest
 Nail and bottle cap in power pole 90.13' East Northeast

Statement of evidence relative to this corner location is on back of page.

I hereby certify that this document and the data contained herein was prepared by me or under my direct supervision.

Sphe E. Moring 2-05-01
SIGNATURE DATE

Registration No. 11943

- Land Surveyor, Professional Engineer
- County Surveyor, County Engineer

OFFICE OF THE COUNTY RECORDER

County of _____

I hereby certify that this document was filed in the Co. Recorders office at 10:45 A.M on the 13 day of August A.D. 19 2001

County Recorder Kay Nerdahl

By *Shirley Roblek*, Deputy

DOCUMENT NO. 226595

Statement of Evidence

On October 10, 2000 Moseng Land Surveying dug and found a 8"x8" square cut Granite stone. We placed a 1" x 20" iron pipe with a seal #11943 on top of it.