

# CERTIFICATE OF LOCATION OF GOVERNMENT CORNER

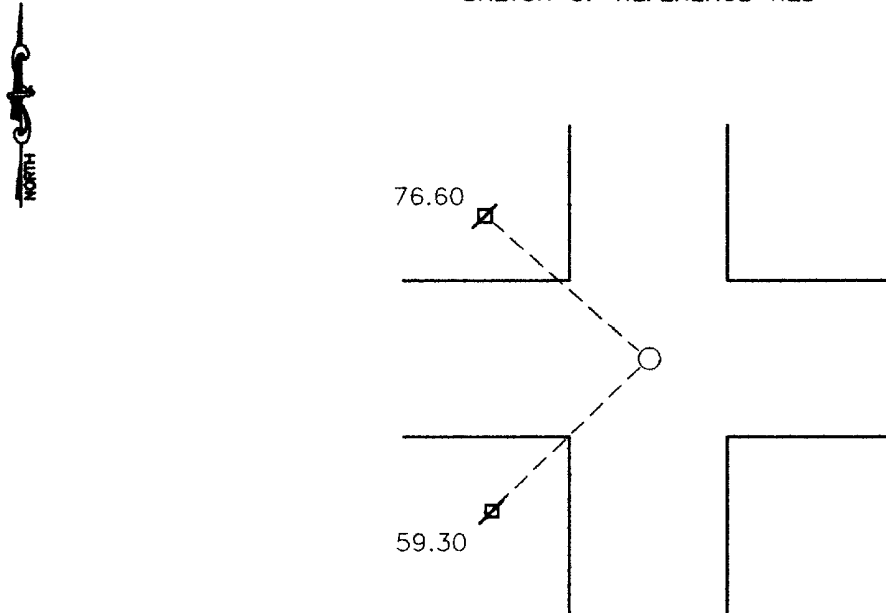
Northeast Corner of Section 22, Township 113, Range 39, 5th P.M.

STATE OF MINNESOTA, County of Yellow Medicine

At the corner location shown on the sketch:

- On 9-27-2000 found a Square cut stone with a 4" spike all the way down  
DATE
- left monument as found,  lowered monument,  removed monument (explain)
- On \_\_\_\_\_ placed a \_\_\_\_\_  
DATE

### SKETCH OF REFERENCE TIES



Nail and seal in powerpole 59.30' Southwest  
 Nail and seal in power pole 76.60' Northwest

Statement of evidence relative to this corner location is on back of page.

I hereby certify that this document and the data contained herein was prepared by me or under my direct supervision.

*Lyle C. Mowery* 12-21-00  
SIGNATURE DATE

Registration No. 11943

- Land Surveyor,  Professional Engineer
- County Surveyor,  County Engineer

OFFICE OF THE COUNTY RECORDER

County of \_\_\_\_\_

I hereby certify that this document was filed in the Co. Recorders office at 10:50 A.M on the 13 day of August A.D. ~~19~~ 2001

County Recorder Kay Nerdahl

By *Dail Rohlik*, Deputy

DOCUMENT NO. 226596

Statement of Evidence

There was a stone recorded on record..

On 9-27-2000, Moseng Land Surveying found a square cut stone with a 4" spike all the way down.