

CERTIFICATE OF LOCATION OF GOVERNMENT CORNER

North quarter Corner of Section 23, Township 113, Range 39, 5th P.M.

STATE OF MINNESOTA, County of Yellow Medicine

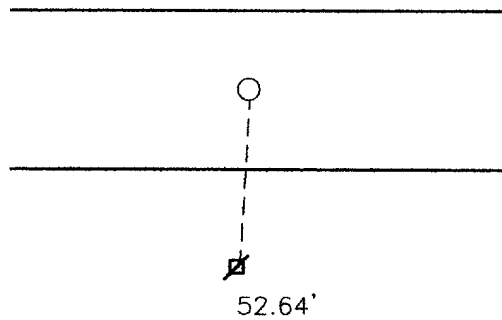
At the corner location shown on the sketch:

On 10-02-2000 found a Nothing

left monument as found, lowered monument, removed monument (explain)

On 10-02-2000 placed a 5/8" rerod w/seal #11943

SKETCH OF REFERENCE TIES



Nail and seal in powerpole 52.64' South

Statement of evidence relative to this corner location is on back of page.

I hereby certify that this document and the data contained herein was prepared by me or under my direct supervision.

Dyle E Mosene 12/21/00
SIGNATURE DATE

Registration No. 11943

Land Surveyor, Professional Engineer
 County Surveyor, County Engineer

OFFICE OF THE COUNTY RECORDER
County of

I hereby certify that this document was filed in the Co. Recorders office at 10:55 A.M on the 13 day of August A.D. 2001

County Recorder Kay Nerdahl

By Steve Rohak, Deputy

DOCUMENT NO. 226597

Statement of Evidence

In 1910 John Norgared found stone and stake.

On 10-02-2000, Moseng Land Surveying dug with backhoe and found nothing. We set a 5/8" rerod with a seal #11943 on line and proportionate according to survey dated June 13, 1910 by John Norgared.