

CERTIFICATE OF LOCATION OF GOVERNMENT CORNER

East quarter Corner of Section 22, Township 113, Range 39, 5th P.M.

STATE OF MINNESOTA, County of Yellow Medicine

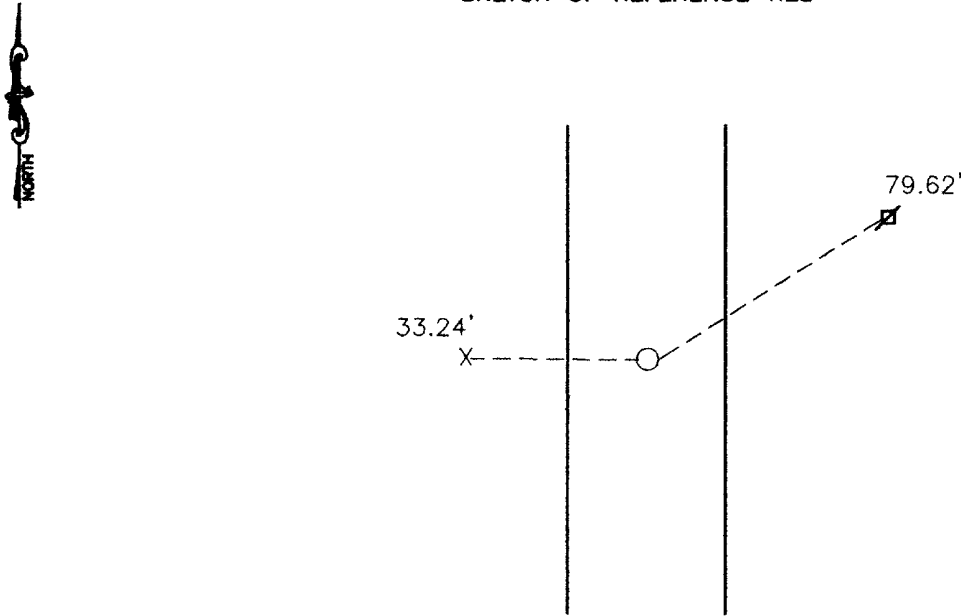
At the corner location shown on the sketch:

On 10-02-2000 found a Nothing

left monument as found, lowered monument, removed monument (explain)

On 10-02-2000 placed a 5/8" rerod with a seal #11943

SKETCH OF REFERENCE TIES



Nail and seal in cut off power pole (corner fence post) 33.24' West

Nail and seal in power pole 79.62' Northeast

Statement of evidence relative to this corner location is on back of page.

I hereby certify that this document and the data contained herein was prepared by me or under my direct supervision.

Lyle C Moring 12-21-00
SIGNATURE DATE

Registration No. 11943

- Land Surveyor, Professional Engineer
- County Surveyor, County Engineer

OFFICE OF THE COUNTY RECORDER

County of _____

I hereby certify that this document was filed in the Co. Recorders office at 11:00 A.M on the 13 day of August A.D. 2001

County Recorder Kay Nerdahl

By Alic Rohlik, Deputy

DOCUMENT NO. 226598

Statement of Evidence

There was a stone recorded in 1910.

On 10-02-2000, Moseng Land Surveying dug with backhoe and found nothing. We set a 5/8" rerod with seal proportionate distance between section corners and 33' East of corner fence post. On line fell 7' West.