

CERTIFICATE OF LOCATION OF GOVERNMENT CORNER

North quarter Corner of Section 32, Township 114, Range 40, 5th P.M.

STATE OF MINNESOTA, County of Yellow Medicine

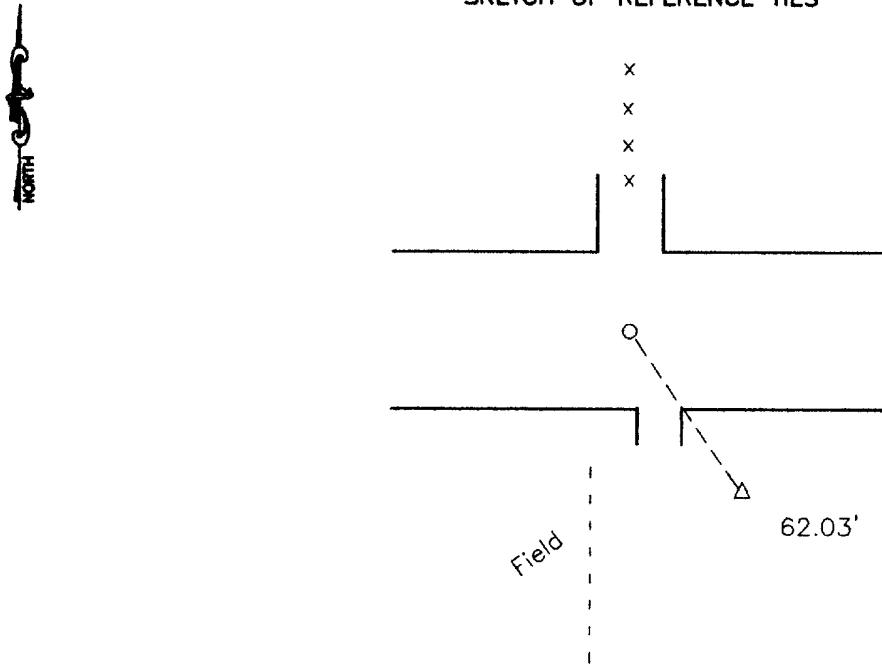
At the corner location shown on the sketch:

On _____ found a _____

left monument as found, lowered monument, removed monument (explain)

On 9-15-2000 placed a 5/8" iron rerod with a seal #11943

SKETCH OF REFERENCE TIES



Top center of telephone pedestal 62.03' Southeast

Statement of evidence relative to this corner location is on back of page.

I hereby certify that this document and the data contained herein was prepared by me or under my direct supervision.

Style C. Messing 1-19-2001
SIGNATURE DATE

Registration No. 11943

- Land Surveyor, Professional Engineer
- County Surveyor, County Engineer

OFFICE OF THE COUNTY RECORDER
County of _____

I hereby certify that this document was filed in the Co. Recorders office at 11:15 A.M on the 13 day of August A.D. ~~19~~ 2001

County Recorder Kay Nerdahl
By Steve Rohik, Deputy

DOCUMENT NO. 226601

Statement of Evidence

On 9-15-2000 Moseng Land Surveying set a 5/8" iron rerod with a seal #11943
In line with section corners and in line with fence to the North.