

CERTIFICATE OF LOCATION OF GOVERNMENT CORNER

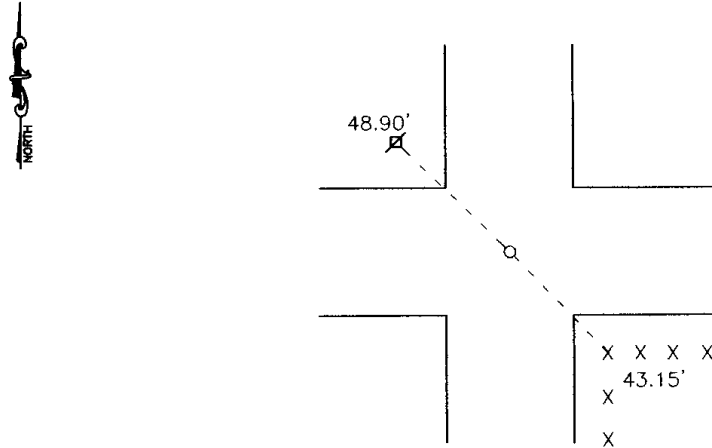
Northeast Corner of Section 16, Township 115, Range 43, 5th P.M.

STATE OF MINNESOTA, County of Yellow Medicine

At the corner location shown on the sketch:

- On July 10, 2003 found a 18" field stone with a 8" stone on top.
DATE
- left monument as found, lowered monument, removed monument (explain)
- On July 10, 2003 placed a 1" pipe w/seal #11943 over stones at road surface
DATE

SKETCH OF REFERENCE TIES



Nail and seal inn power pole NW48.90'
 Nail and seal in corner fence post SE 43.15'

Statement of evidence relative to this corner location is on back of page.

I hereby certify that this document and the data contained herein was prepared by me or under my direct supervision.

Style E. Moring 1-28-04
SIGNATURE DATE

Registration No. 11943

- Land Surveyor, Professional Engineer
- County Surveyor, County Engineer

OFFICE OF THE COUNTY RECORDER
County of _____

I hereby certify that this document was filed in the Co. Recorders office at _____ .M on the _____ day of _____ A.D. 19 _____

County Recorder _____

By _____, Deputy

DOCUMENT NO. _____

Statement of Evidence

On July 10, 2003 Moseng Land Surveying dug with backhoe in the center of the intersection and found an 18 inch field stone with an 8 inch field stone above it.

Doc# 236824 Fee: \$.00 2 Pages
Office of County Recorder, Yellow Medicine County, Minnesota
I hereby certify that the within instrument was
filed on December 17, 2004 at 09:00 AM

Kay Zempel, Yellow Medicine County Recorder
BY Kay Zempel ~~Deputy~~