

CERTIFICATE OF LOCATION OF GOVERNMENT CORNER

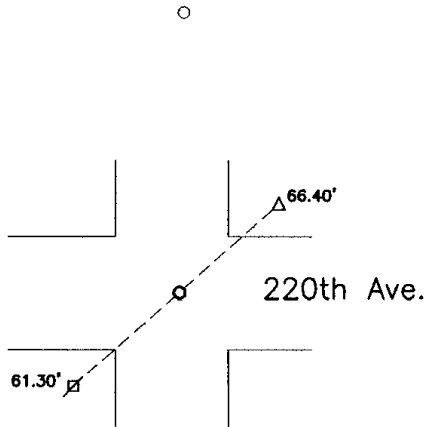
Northeast Corner of Section 3, Township 114, Range 41, 5th P.M.

STATE OF MINNESOTA, County of Yellow Medicine

At the corner location shown on the sketch:

- On Oct. 27, 2003 found a R.R. spike and sprocket over 6"x6" square cut granite stone
DATE
- left monument as found, lowered monument, removed monument (explain)
- On Oct. 28, 2003 placed a 1" iron pipe w/seal #11943 at road surface over stone
DATE

SKETCH OF REFERENCE TIES



Nail & Seal in Power Pole SW 61.30'
 Nail & Seal in Pedestal Post NE 66.40'

Statement of evidence relative to this corner location is on back of page.

I hereby certify that this document and the data contained herein was prepared by me or under my direct supervision.

Ryle E. Moring 1-28-04
SIGNATURE DATE

Registration No. 11943
 Land Surveyor, Professional Engineer
 County Surveyor, County Engineer

OFFICE OF THE COUNTY RECORDER
 County of _____

I hereby certify that this document was filed in the Co. Recorders office at _____ M on the _____ day of _____ A.D. 19 ____

County Recorder _____
 By _____, Deputy
 DOCUMENT NO. _____

