

# CERTIFICATE OF LOCATION OF GOVERNMENT CORNER

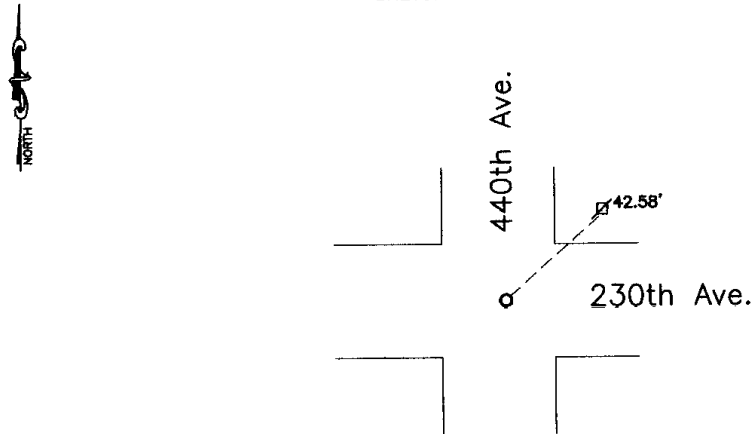
Northeast Corner of Section 34, Township 115, Range 41, 5th P.M.

STATE OF MINNESOTA, County of Yellow Medicine

At the corner location shown on the sketch:

- On Oct. 27, 2003 found a 6"x6" square cut granite stone  
DATE
- left monument as found,  lowered monument,  removed monument (explain)
- On Oct. 28, 2003 placed a 1" iron pipe w/seal #11943 at road surface over stone  
DATE

### SKETCH OF REFERENCE TIES



Nail & Seal in Power Pole NE 42.58'

Statement of evidence relative to this corner location is on back of page.

I hereby certify that this document and the data contained herein was prepared by me or under my direct supervision.

Lyle E Mooring 1-28-04  
SIGNATURE DATE

Registration No. 11943

- Land Surveyor,  Professional Engineer
- County Surveyor,  County Engineer

OFFICE OF THE COUNTY RECORDER  
County of \_\_\_\_\_

I hereby certify that this document was filed in the Co. Recorders office at \_\_\_\_\_ M on the \_\_\_\_\_ day of \_\_\_\_\_ A.D. 19 \_\_\_\_\_

County Recorder \_\_\_\_\_

By \_\_\_\_\_, Deputy

DOCUMENT NO. \_\_\_\_\_

Statement of Evidence

Stone recorded as being found in 1951

On October 27, 2003, Moseng Land Surveying dug with a backhoe in center of intersection. Found a 6"x6" square cut granite stone 1.5'± down. Set a 1" iron pipe with seal #11943 at road surface, over the found stone.

Doc# 236826      Fee: \$ .00      2 Pages  
Office of County Recorder, Yellow Medicine County, Minnesota  
I hereby certify that the within instrument was  
filed on December 17, 2004 at 09:10 AM

Kay Zempel, Yellow Medicine County Recorder  
BY Kay Zempel Deputy