

CERTIFICATE OF LOCATION OF GOVERNMENT CORNER

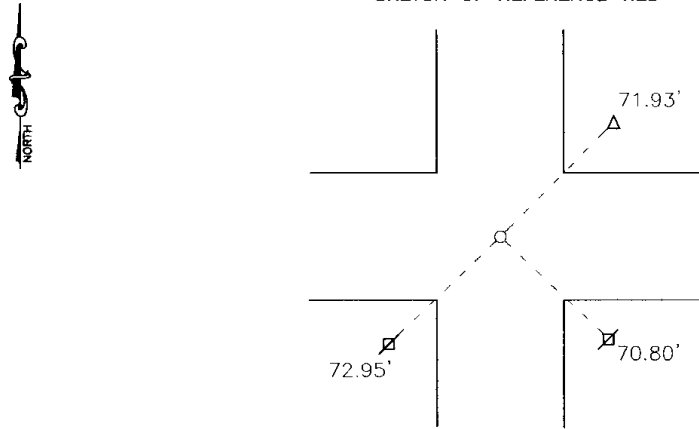
Northeast Corner of Section 21, Township 113, Range 39, 5th P.M.

STATE OF MINNESOTA, County of Yellow Medicine

At the corner location shown on the sketch:

- On _____ found a _____
DATE
- left monument as found, lowered monument, removed monument (explain)
- On 5-7-2003 placed a 1" pipe with seal #11943
DATE

SKETCH OF REFERENCE TIES



Nail and bottle cap in power pole Southwest 72.95'
 Nail and bottle cap in power pole Southeast 70.80'
 Nail and seal in telephone guard post Northeast 71.93'

Statement of evidence relative to this corner location is on back of page.

I hereby certify that this document and the data contained herein was prepared by me or under my direct supervision.

Lyle E Mooring 2-06-04
 SIGNATURE DATE

Registration No. 11943

- Land Surveyor, Professional Engineer
- County Surveyor, County Engineer

OFFICE OF THE COUNTY RECORDER

County of _____

I hereby certify that this document was filed in the Co. Recorders office at _____ M on the _____ day of _____ A.D. 19 _____

County Recorder _____

By _____, Deputy

DOCUMENT NO. _____

Statement of Evidence

On May 7, 2003 Moseng Land Surveying dug and found 2 large spikes and a small piece of old wood. We set a 1" pipe with seal #11943 where the 2 spikes were.

Doc# 236984 Fee: \$.00 2 Pages
Office of County Recorder, Yellow Medicine County, Minnesota
I hereby certify that the within instrument was
filed on January 4, 2005 at 01:35 PM

Kay Zempel, Yellow Medicine County Recorder
BY *Paul K. Huk* Deputy