

# CERTIFICATE OF LOCATION OF GOVERNMENT CORNER

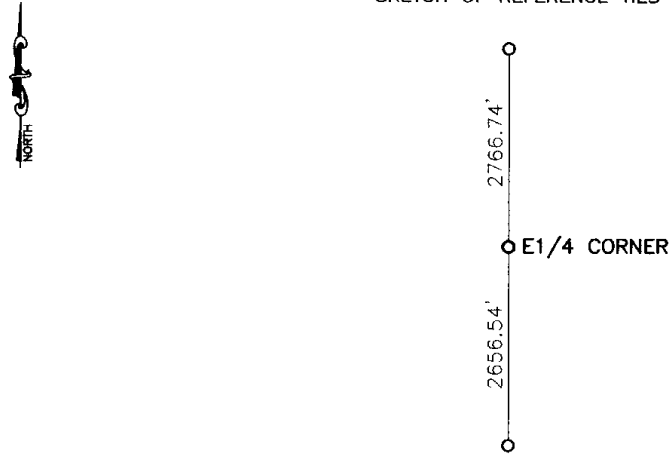
East Quarter Corner of Section 21, Township 113, Range 39, 5th P.M.

STATE OF MINNESOTA, County of Yellow Medicine

At the corner location shown on the sketch:

- On \_\_\_\_\_ found a \_\_\_\_\_  
DATE
- left monument as found,  lowered monument,  removed monument (explain)
- On 5-7-2003 placed a P.K. nail in line and proportionally between section corners.  
DATE

### SKETCH OF REFERENCE TIES



Nothing to tie to.

Statement of evidence relative to this corner location is on back of page.

I hereby certify that this document and the data contained herein was prepared by me or under my direct supervision.

Lyle C. Moring 2-06-04  
SIGNATURE DATE

Registration No. 11943

- Land Surveyor,  Professional Engineer
- County Surveyor,  County Engineer

### OFFICE OF THE COUNTY RECORDER

County of \_\_\_\_\_

I hereby certify that this document was filed in the Co. Recorders office at \_\_\_\_\_ M on the \_\_\_\_\_ day of \_\_\_\_\_ A.D. 19 \_\_\_\_\_

County Recorder \_\_\_\_\_

By \_\_\_\_\_, Deputy

DOCUMENT NO. \_\_\_\_\_

Statement of Evidence

In 1912 John Norgaard set a iron rod 2652.00 feet North of the Southeast corner of section 21, his total mile was 5414 feet.

On May 7, 2003 Moseng Land Surveying did not find corner. We set a P.K. nail in line and proportionally between section corners. It fell 2656.54 feet North of the Southeast corner. Construction will take out any corner we set.

$$\frac{2652}{5414} = \frac{2656 \overset{54}{\underline{\quad}}}{54 \overset{23}{\underline{\quad}} \overset{28}{\underline{\quad}}}$$

Doc# 236985 Fee: \$0.00 2 Pages  
Office of County Recorder, Yellow Medicine County, Minnesota  
I hereby certify that the within instrument was  
filed on January 4, 2005 at 01:40 PM

Kay Zempel, Yellow Medicine County Recorder  
BY Jill Kunk Deputy