

# CERTIFICATE OF LOCATION OF GOVERNMENT CORNER

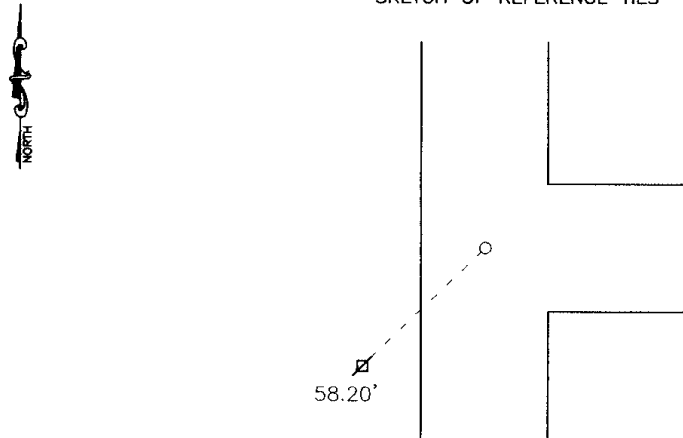
Northeast Corner of Section 28, Township 113, Range 39, 5th P.M.

STATE OF MINNESOTA, County of Yellow Medicine

At the corner location shown on the sketch:

- On \_\_\_\_\_ found a \_\_\_\_\_  
DATE
- left monument as found,  lowered monument,  removed monument (explain)
- On 5-7-2003 placed a 1" pipe with seal #11943 in center of intersection.  
DATE

### SKETCH OF REFERENCE TIES



Nail and bottle cap in power pole Southwest 58.20'

Statement of evidence relative to this corner location is on back of page.

I hereby certify that this document and the data contained herein was prepared by me or under my direct supervision.

Lyle C. Moore 2-06-04  
SIGNATURE DATE  
Registration No. 11943

- Land Surveyor,  Professional Engineer
- County Surveyor,  County Engineer

OFFICE OF THE COUNTY RECORDER  
County of \_\_\_\_\_

I hereby certify that this document was filed in the Co. Recorders office at \_\_\_\_\_ M on the \_\_\_\_\_ day of \_\_\_\_\_ A.D. 19 \_\_\_\_\_

County Recorder \_\_\_\_\_

By \_\_\_\_\_, Deputy

DOCUMENT NO. \_\_\_\_\_

Statement of Evidence

On May 7, 2003 Moseng Land Surveying found three large spikes in the center of the intersection. We set a 1" pipe with seal #11943 where the spikes were.

Doc# 236986      Fee: \$.00      2 Pages  
Office of County Recorder, Yellow Medicine County, Minnesota  
I hereby certify that the within instrument was  
filed on January 4, 2005 at 01:45 PM  
Kay Zempel, Yellow Medicine County Recorder  
BY Steve Rohlf Deputy